

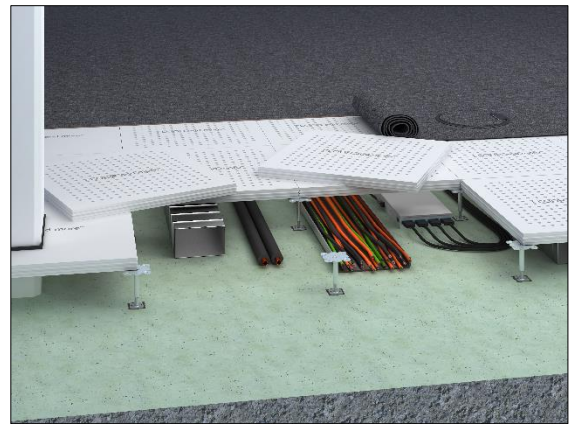


FLOOR and more[®] acoustic

Dry hollow floor for acoustical adjustment

The dry hollow floor system FLOOR and more[®] acoustic is used for the acoustic optimisation of rooms. The perforated hollow floor panels type acoustic consist of fibre-reinforced calcium sulphate, a qualified covering and optional project-specific cavity sound deadening, acoustic fleece or acoustic element for the regulation of the room acoustics and the optimisation of the degree of sound absorption. The gluing of the FLOOR and more[®] panels is made with a special tongue and grooving at the edges of the panels which are forming a closed load bearing layer. The substructure consists of height-adjustable zinc-coated steel pedestals from our own production which form the necessary cavity for installations.

- acoustic-effective floor panel with qualified covering and optional with cavity sound deadening, acoustic fleece or acoustic element
- excellent absorption performance
- multiple options with the choice of qualified coverings
- different variants of the acoustic panels can be combined with each other and other floor systems



Samples for building portfolio

Assembly Rooms, Broadcasting Rooms, Television Studios, Common Rooms, Facilities for Meetings, Conventions and Conferences, Offices, Stage and Studio Rooms, Banks, Cinemas and Theatres, Concert Halls, Museums, Sales Areas, Places of Assembly, Shopping Centres, Library Rooms, School, School of Higher Education, Court Houses, Government Buildings, Entrance Areas, Escape Routes, Hotels and Resorts, Pharmacies (Production)



Technical data

Weight	50 - 55 kg/m ²
Panel thickness	40 - 70 mm
Standard pedestal height	40 - 2,000 mm
Pedestal grid	600 mm x 600 mm
Earth resistance	≥ 1x 10 ⁶ Ω

Acoustics

Room acoustics

Degree of sound absorption	DIN EN ISO 354	α _w	0.15 – 0.75
Sound absorption class	DIN EN ISO 11654		E - C

Statics

Load class	DIN EN 13213	2
Point load (breaking load)	DIN EN 13213	3 kN (6 kN)
Seismic safety		earthquake-proof construction possible



Fire protection

Reaction to fire performance of the carrier panel

Reaction to fire performance	DIN 4102-1	A2
Reaction to fire performance	DIN EN 13501-1	A1
Designation by the building authorities	DIN 4102-1	non-combustible
Designation by the building authorities	DIN EN 13501-1	non-combustible

Sustainability

Circular economy	Cradle to Cradle possible
Self-declaration	self-declaration in acc. with ISO 14021 possible
Environmental product declaration	verified EPD in acc. with EN 15804 / ISO 14025 possible
FSC	optional (TUEV-COC-000515)

Floor coverings

Suitability of covering	qualified acoustic-effective coverings
-------------------------	--