



AirBeam Basic

Standard Heated/Chilled Beam

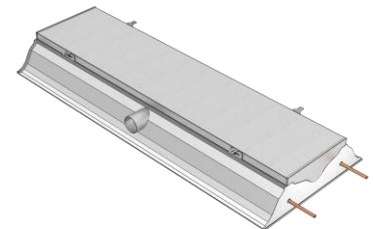
The heated/chilled beam AirBeam is integrated into Plafotherm® heated/chilled ceilings or Lindner LMD metal ceiling systems and can be realised in various designs. AirBeam Basic is a visible heated/chilled beam that is integrated into the ceiling system as a single element with big perforation and wide slots. It is additionally connected to a central air supply machine. Thanks to the targeted air circulation through supply air, high capacities can be achieved with this product.

- single element with big perforation and wide slots
- additional connection to a central air supply machine
- high capacities thank to room air cooling



Technical data

Length (L)	1,200 - 1,300 mm	
Width (B)	600 - 625 mm	
Height (H)	185 mm	
Weight	25 - 35 kg	
Perforation	Hole shape:	round hole
	Hole arrangement:	diagonal pitch
	Hole diameter:	6.1 mm
	Hole distance:	7.6 mm
	Open area:	approx. 50 %
Ventilation connection	DN 100	
Volume flow rate	29 - 97 m³/h	
Pressure	50 - 100 Pa	
Waterside pipe connection	12 mm copper pipe	
Pressure resistance	16 bar	



Fire protection

Building material class

Manufactured from non-combustible materials

Durability

Exposure class	DIN EN 13964	A
----------------	--------------	---



HVAC

Heating and cooling

Ventilation side pressure	50 Pa	75 Pa	100 Pa
Ventilation side volume flow rate	29 - 68 m³/h	40 - 83 m³/h	47 - 97 m³/h
Waterside nominal cooling capacity (10 K) according to EN 14240	402 - 541 W/unit	485 - 616 W/unit	535 - 673 W/unit
Waterside nominal heating capacity (15 K) according to EN 14037:2003	314 - 422 W/unit	378 - 480 W/unit	420 - 525 W/unit

Combinable with

Metal ceilings	<u>LMD-B 100</u> <u>LMD-B 110</u> <u>LMD-E 200</u>	<u>LMD-E 213</u> <u>LMD-E 214</u> <u>LMD-E 312</u>
Heated/Chilled ceilings	<u>Plafotherm® B 100</u> <u>Plafotherm® B 110</u> <u>Plafotherm® E 200</u> <u>Plafotherm® E 213</u>	<u>Plafotherm® E 214</u> <u>Plafotherm® E 312</u> <u>Plafotherm® GK HEKDA®</u> <u>Plafotherm® B/E AirHybrid</u>

Applications



© www.justdirk.net



© www.justdirk.net

Project solutions

This product data sheet refers to the standard version of the product mentioned above. We would be happy to work with you to find the right solution for your project. Adapted to your building project, you will receive a perfectly matched system. Project-specific constructions and adaptations can be found in the offer documents.