



Partition system Sandwich P

Description

The cleanroom partition system type Sandwich P is ideal for use in clean rooms. The sandwich construction elements consist of various sheet metal panels with different fillings.

The partition system excels in high air tightness and is easy to clean and disinfect. GMP- and DIN EN ISO 14644 suitable design. The surface is even, flush, suitable for flush installation and does not contain any outgassing or particle emitting materials. The partition joints are optionally sealed with a clean room suitable sealant.

Field of application

- Pharmaceutical industry and medical engineering
- Electronics and semiconductor industry
- Microsystems-, precision mechanics- and optical industry
- Laboratories and research centers
- Surface treatment technology
- Data processing centers



For more information, visit our website
www.Lindner-Group.com

LINDNER SE | CLEAN ROOMS

Bahnhofstraße 29 | 94424 Amstorf | Germany | Tel. +49 (0)8723 20-3671 | Reinraumtechnik@Lindner-Group.com | www.Lindner-Group.com

We reserve the right to adapt and amend all details and information at any time. We do not accept liability for information that is inadvertently incorrect. This document is protected by copyright law. Processing, unauthorised use or reproduction and public distribution are not permitted. Reproduction and distribution to third parties are only permitted with our express consent.

System description

Sheet metal covering

- Sheet metal (standard)
 - Powder coating acc. to RAL or NCS
 - Coil-Coating (duplex)
Color RAL 9010
- Stainless steel
 - Stainless steel ground and polished (duplo-grinding)
 - Ground stainless steel

Filling material

- Polystyrene (Building material class B1)
Density: 25 kg/m³
Thermal conductivity classification 035 - 040
- Aluminum honeycomb (A1)
Density: 23 kg/m³



Options

Glazing

Spandrel glazing
Toughened safety glass, laminated safety glass
Thickness: 6 mm

Accessories

- overflow air grilles
- ductwork for cables
- integrated ductwork

Technical data

Partition thickness	60 mm
Axial grid	1200 mm
Partition height	up to 3.200 mm (depending on installation section)
System weight	15 - 22 kg/m ²
Fire Resistance	F0
Joint width	3 mm

Customized solutions based on the requirements of the project available upon request.



For more information, visit our website
www.Lindner-Group.com

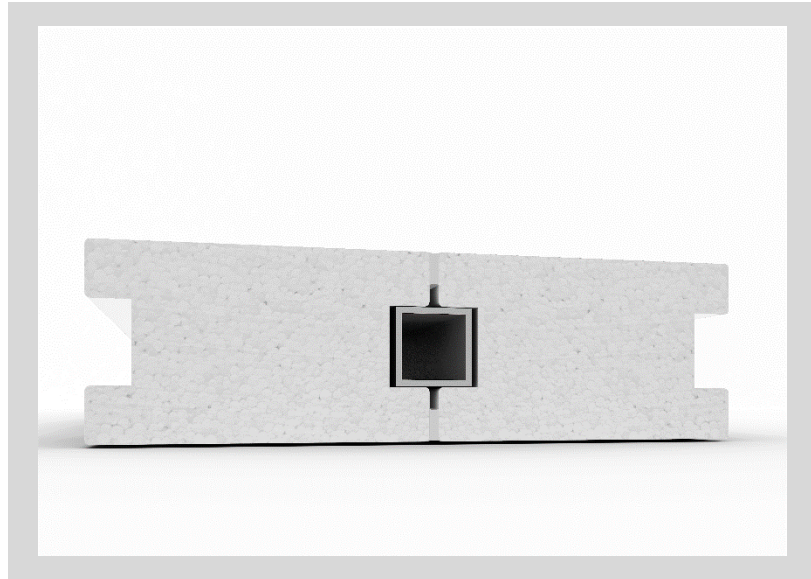
LINDNER SE | CLEAN ROOMS

Bahnhofstraße 29 | 94424 Amstorf | Germany | Tel. +49 (0)8723 20-3671 | Reinraumtechnik@Lindner-Group.com | www.Lindner-Group.com

We reserve the right to adapt and amend all details and information at any time. We do not accept liability for information that is inadvertently incorrect. This document is protected by copyright law. Processing, unauthorised use or reproduction and public distribution are not permitted. Reproduction and distribution to third parties are only permitted with our express consent.

Applicable standards

- **DIN 18202** tolerances in building construction – branches of building industry



For more information, visit our website
www.Lindner-Group.com

LINDNER SE | CLEAN ROOMS

Bahnhofstraße 29 | 94424 Amstorf | Germany | Tel. +49 (0)8723 20-3671 | Reinraumtechnik@Lindner-Group.com | www.Lindner-Group.com

We reserve the right to adapt and amend all details and information at any time. We do not accept liability for information that is inadvertently incorrect. This document is protected by copyright law. Processing, unauthorised use or reproduction and public distribution are not permitted. Reproduction and distribution to third parties are only permitted with our express consent.