

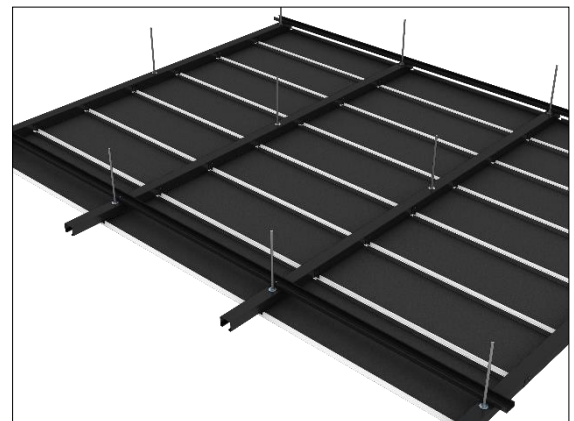
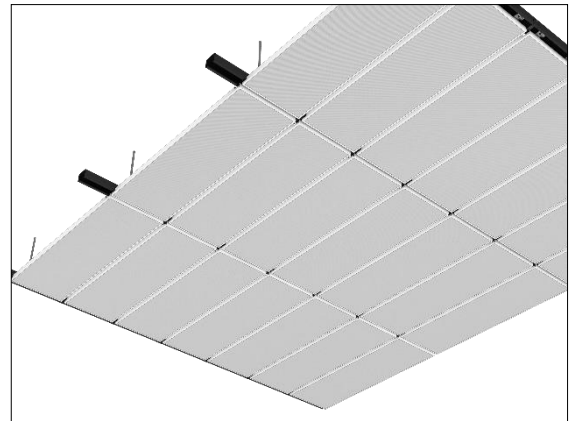


LMD-E 213 WL

Hook on ceiling for exterior areas

The Hook-On ceiling LMD-E 213 WL is suitable for roofed exterior areas, railway stations, underground car parks etc. for wind pressure and suction loads up to 100 kg/m² in standard execution. Local weather and project-specific conditions have to be considered during planning. Accentuated joints of this exterior ceiling generate a homogeneous ceiling surface with concealed substructure. This installation-friendly system has a maintenance option and is furnished with the high-grade Meteo corrosion protection coating.

- hook-on ceiling with tested wind pressure/suction loads
- homogeneous ceiling surface due to concealed substructure
- ceiling layout with accentuated joints in both directions possible
- maintenance option due to ceiling panels that can be individually operated
- project-related, higher wind pressure/suction loads can be realised
- hygienic and easy to clean





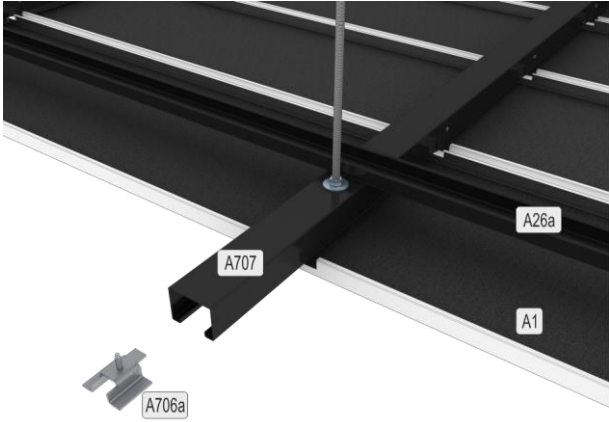
Ceiling elements

LMD-E 213 WL Type 1			 
Hook-On			
Length (L)	250 - 2,000 mm	250 - 1,000 mm	
Width (B)	200 - 600 mm	200 - 1,000 mm	
Height (H)	30 mm		
Joint width (F)	20 mm		
LMD-E 213 WL Type 3			 
Hook-On, Swing-Down option			
Length (L)	250 - 2,000 mm	250 - 1,000 mm	
Width (B)	200 - 600 mm	200 - 1,000 mm	
Height (H)	30 mm		
Joint width (F)	20 mm		

Technical data

Material	galvanised sheet steel, stainless steel
Weight	approx. 10 - 12 kg/m ² (without fixtures/installations)
Serviceability	removable
Wall connection options	U-profile, with shadow gap

Component list

A1	ceiling panel	
A26a	suspension channel 60 - Meteo	
A706a	hold-down clip for double hook-on profile 54/WL	
A707	double hook-on profile 54/WL	

Fire protection

Fire stability		
Fire stability	EN 13501-2	30 minutes



Durability

Durability range	ISO 12944-6:1998	high (H)
Corrosion category	DIN EN ISO 9223	C3

Sustainability

Product self-declaration	Self-declaration according to ISO 14021
Environmental product declaration	EPD according to EN 15804 / ISO 14025
French VOC Regulation	Emission class A+

Statics

Wind Loads	25, 50, 75, 100 kg/m ²
Seismic Safety	qualification according to AC 156/Eurocode/SIA 261

Certification

TAIM e. V.	The ceiling system fulfils the requirements of the "Technical Manual Metal Ceilings" (TMMC) of TAIM e.V. (Association of Industrial Metal Ceiling Manufacturers).
------------	---

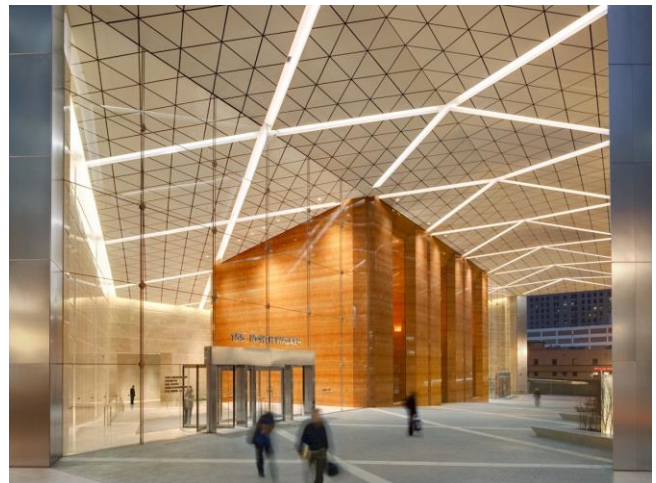
Surfaces

Powder coatings	<u>COLOURline - Powder coating</u>
Design surfaces	<u>TOUCHdesign Lunar - 3D hammered</u>
Functional coatings	<u>Meteo - Corrosion protection coating</u>

Application examples



© Thomas Rossiter



© Gary Britton Photography



Project solutions

This product data sheet refers to the standard version of the product mentioned above.

We would be happy to work with you to find the right solution for your project. Adapted to your building project, you will receive a perfectly matched system. Project-specific constructions and adaptations can be found in the offer documents.