



# MOODline

## Powder Coating Deep Matt

The deep matt powder coating MOODline creates discreet and elegant surfaces with very low gloss levels. This effect is especially apparent in open rooms with room-high glazing. As the surface is insensitive to streak of light, a homogeneous appearance is achieved. Thus you create timeless and impressive atmospheres in your rooms

- deep matt powder coating with very low gloss level
- discreet, elegant surface for timeless designs in interior areas
- homogeneous appearance and insensitive to streak of light
- especially effective in open rooms with room-high glazing



### Technical data

Substrate	steel
Recommended perforations	all perforations possible, microperforations are recommended to receive a discreet appearance

### Acoustics

#### Room acoustics

Room acoustics	equipped with acoustic inlays, perforated surfaces achieve very high sound absorption values
----------------	--

### Fire protection

#### Building material class

Building material class	DIN EN 13501-1	A2 - s1, d0
Building material class	ASTM E 84	Class A

### Durability

Exposure class	DIN EN 13964	A
----------------	--------------	---



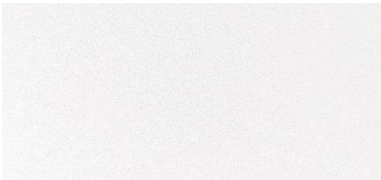


## Combinable with

Metal ceilings	<u>LMD-B 100</u> <u>LMD-B 100 SD</u> <u>LMD-B 110</u> <u>LMD-B 147 SD</u> <u>LMD-DS 315</u> <u>LMD-DS 320</u> <u>LMD-E 200</u> <u>LMD-E 210</u>	<u>LMD-E 213</u> <u>LMD-E 213 BWS</u> <u>LMD-E 214</u> <u>LMD-E 300</u> <u>LMD-E 312</u> <u>LMD-E 321</u> <u>LMD-E 340</u> <u>LMD-K 420</u>	<u>LMD-L 608</u> <u>LMD-St 213</u> <u>LMD-St 213 BWS</u> <u>LMD-St 214</u> <u>LMD-St 215</u> <u>LMD-St 312</u> <u>LMD-St 700 BWS</u>
Fire rated metal ceilings	<u>F30 Swing-Down-Slide</u> <u>F30 Hook-On-Swing-Down-Slide</u> <u>EI30 Hook-On-Swing-Down-Slide</u> <u>EI30-VKF Hook-On-Swing-Down-Slide</u> <u>F30 Drop-Slide</u> <u>F90 Hook-On-Swing-Down-Slide</u> <u>EI90 Hook-On-Swing-Down-Slide</u> <u>EI90-VKF Hook-On-Swing-Down-Slide</u>		
Heated/Chilled ceilings	<u>Plafotherm® B 100</u> <u>Plafotherm® B 100 SD</u> <u>Plafotherm® B 110</u> <u>Plafotherm® B 147 SD</u> <u>Plafotherm® DS 315</u> <u>Plafotherm® DS 320</u>	<u>Plafotherm® DS Tabs 78</u> <u>Plafotherm® DS Tabs 125</u> <u>Plafotherm® DS TAS</u> <u>Plafotherm® E 200</u> <u>Plafotherm® E 210</u> <u>Plafotherm® E 213</u>	<u>Plafotherm® E 214</u> <u>Plafotherm® E 312</u> <u>Plafotherm® L 608</u> <u>Plafotherm® St 213</u> <u>Plafotherm® B/E AirHybrid</u> <u>Plafotherm® DS AirHybrid</u>

## Surfaces

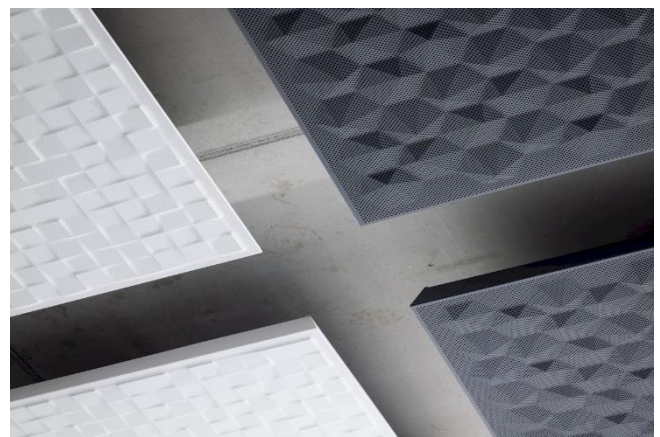
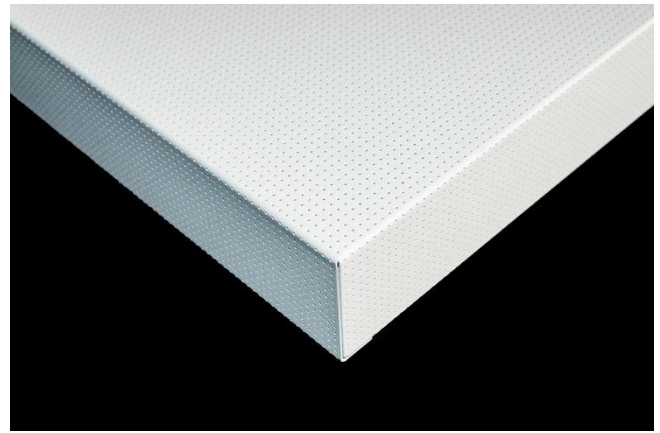
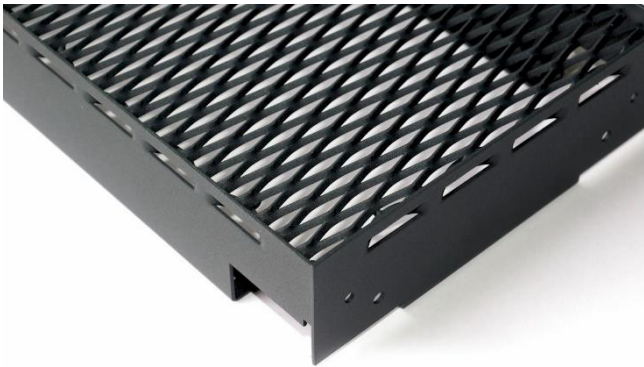
### Standard colours

Natural white 9016	Colour name: Natural white 9016 Gloss level: 2 - 3 GU Gloss: deep matt Reflectance: approx. 75 %	
Lava grey 7016	Colour name: Lava grey 7016 Gloss level: 3 - 4 GU Gloss: deep matt Reflectance: approx. 8 %	
Polar white 9003	Colour name: Polar white 9003 Gloss level: 4 GU Gloss: deep matt Reflectance: approx. 79 %	

Notice: colours displayed on the screen or printout are not binding because brightness and contrast may vary. Therefore small colour differences are possible.



## Applications



## Project solutions

This product data sheet refers to the standard version of the product mentioned above. We would be happy to work with you to find the right solution for your project. Adapted to your building project, you will receive a perfectly matched system. Project-specific constructions and adaptations can be found in the offer documents.