

DATEV

Nürnberg, Germany





Project Description

The IT service provider and software developer DATEV eG extended its capacities with the new office building "IT-Campus 111". The building features 1,800 workplaces and 150 places of retreat, together with modern conference and meeting rooms. The architecture and equipment of the office areas support both internal communication and concentrated working all the while creating ideal overall conditions for work routines in modern software development.

Lindner's performances play a crucial role in the interior design concept. In order to create the aforementioned spaces for concentrated working and meetings, Lindner partition systems and doors were installed. Designed as the room-in-room system Lindner Cube, these partitions excel at creating a pleasant room atmosphere in open-plan offices. This effect is enhanced by Lindner canopy ceilings with integrated heating and cooling technology, installed in meeting rooms.

General

Building Type	Office buildings
Company Division	Lindner SE Heating and Cooling, Lindner SE Partitions
Completion	2014 - 2015
Client	DATEV eG
Architect	Boesel Benkert Hohberg Architekten

Completed Works

- **Ceilings**
Heated and Chilled Canopy Ceilings
- **Partitions**
Partition Systems Glass
Doors for Partition Systems
Partition Systems Full Panel
Lindner Logic 100 Timber
- **Room-in-Room**
Lindner Cube solo

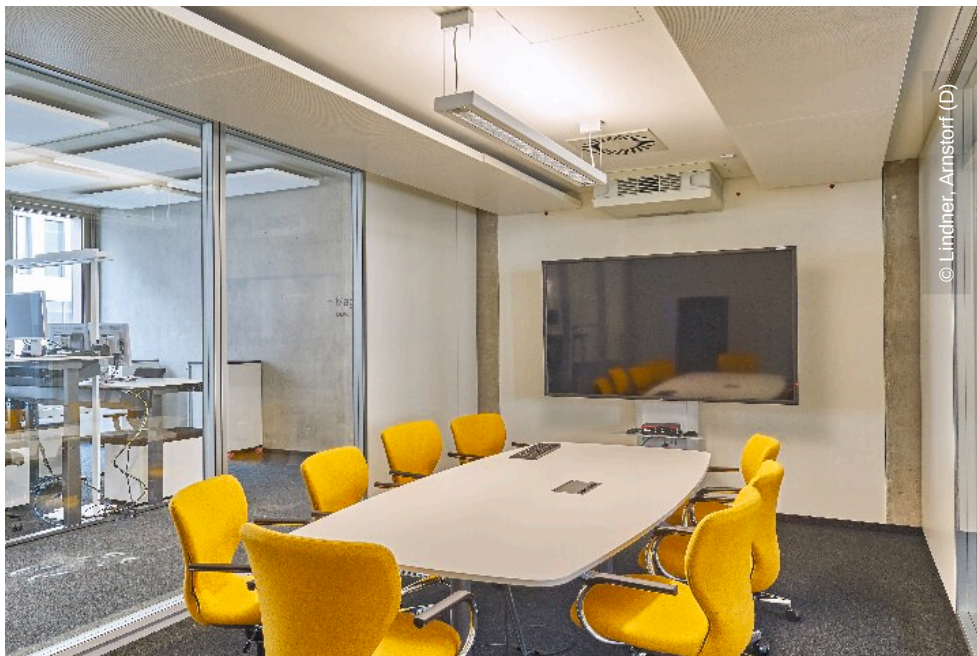




© Lindner, Arnstorf (D)



© Lindner, Arnstorf (D)



© Lindner, Arnstorf (D)



© Lindner, Arnstorf (D)