



## DryTile

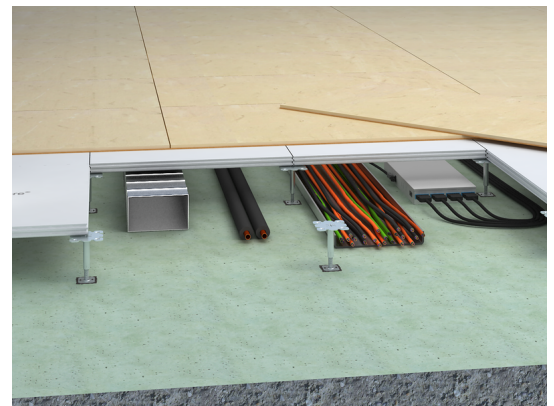
### Ceramic tiles with cork at bottom side

DryTile is a highly effective laying method for ceramic surfaces which enables a dust-free laying of tiles. They can be used immediately on a smooth surface, ideally FLOOR and more® dry hollow floor. Only 12 to 24 hours after tiling and jointing, the surface is ready to carry loads.

A layer of cork is applied to stone panels or ceramic tiles of all sizes at the factory creating a dry tile. Primer and adhesive are replaced by the cork layer on the reverse side and therefore DryTile can be laid up to eight times faster. Closing times are reduced and construction processes are optimised. The cork also acts as an effectively acoustic decoupling from the underground. Furthermore, a circumferential tile edge ensures the predefined alignment of the panels to a joint width of 3 mm.

DryTile offers extremely quick installation without waiting times and a very high area efficiency. At the same time, this convenient laying method reliably guarantees an optimum result.

- ceramic tile with cork coating at bottom side
- emission- and dust-free laying for clean indoor air
- elastic cushioning of the tiles due to a patented decoupling back structure
- low-risk and ergonomic laying of large format tiles
- can be revised at any time in case of change of use or subsequent installations
- unlimited range of decors
- acoustic and structural decoupling from underground (13 - 18 dB reduction of impact sound pressure level)



#### datasheet.headline.einsatzgebiete.title

**Businesses, Recreation and Culture:** Banks, Museums, Sales Areas, Concert Halls, Places of Assembly, Shopping Centres, Cinemas and Theatres

**Work:** Common Rooms, Facilities for Meetings, Conventions and Conferences, Assembly Rooms, Office buildings, Broadcasting Rooms, Television Studios, Stage and Studio Rooms

**Education:** Library Rooms, School of Higher Education, Schools, Research Rooms

**Public Institutions:** Court Houses, Government Buildings

**Public Areas:** Entrance Areas, Escape Routes

**Transport:** Airports, Train Stations, Subways and Tunnels

**Hotels and Gastronomy:** Restaurants and Canteens, Hotels and Resorts

**Healthcare:** Clinics and Hospitals

**Residential**



#### datasheet.headline.technischeAnforderungen.title

**Hygiene:** Cleanable by vacuuming, Wipeable, Antibacterially disinfestable, Virucide disinfestable

**Statics:** Walkability, Seismic Safety, Heavy-Duty Loads

**Design:** Wood, Varnish, Perforation

**Climatic Regulation:** Air Permeability, Ventilation, Heating and Cooling

**Safety Technology:** Electrostatics, Intruder Protection, Radiation Protection

**Corrosion Protection:** Interiors

**Sustainability:** Environmental Product Declaration

**Fire Protection:** Fire Behaviour / Building Material Class

### Technical data

Slip resistance	EN_51130_2014	R 9, R 10
-----------------	---------------	-----------



Thickness	depending on the ceramic tile
Length	available in different lengths
Width	available in different widths
Structure	ceramic tile with cork coating at bottom side

**Fire protection**

**objectbrick.Brandschutz.Baustoffklasse.title**

Building material class	DIN EN 13501-1	Bfl-s1
-------------------------	----------------	--------