

Building
New Solutions

Business Division
Fit-Out Northwest

 **Lindner**

Your Project in Good Hands

Fit-Out Region Northwest

More than just a construction company

– a genuine family business

„We are a genuine family business from Lower Bavaria. Our shirt-sleeve approach, our pragmatism and our solution-orientation unite us and make Lindner unique. Who we are, what we do and what lies behind our joint success is what we want to tell you on the following pages on the following pages. Auf geht’s...“

Your Veronika Lindner

The hard facts about Lindner

Lindner is Europe’s leading full-service provider for interior fit-out, building envelopes, building services, and insulation technology. Founded in 1965 by Hans Lindner, the company is now run by the second generation together with the Managing Board from its headquarters in Arnstorf, Lower Bavaria. Both his four daughters and their partners are actively involved in various leadership positions within the company, and are entrepreneurs at heart. With over 7,500 employees, production facilities, and subsidiaries in more than 20 countries, we can be found all around the world. Despite our global presence, Arnstorf remains our home and the foundation of our success.

Our mission

“Building New Solutions”...

... means implementing innovative ideas for construction projects all around the globe. In doing so, we take responsibility for a future worth living and drive forward the topics of digitalisation and sustainability with new solutions.

What sets us apart?

We work with passion to satisfy our customers. Equally, the well-being, health, and personal success of all those involved are important to us. We see each other as colleagues - at all levels within the company. Because only by working hand in hand can we be successful; “building together” makes us strong and unique. This sense of togetherness is reflected in all our projects and partnerships.

More than just a

construction company

As a family business, we place great value on tradition and sustainability, but also on innovation and healthy growth. We have been successfully operating in the construction industry since 1965, always following our own path. Our corporate group includes not just construction and real estate, but also catering and organic agriculture.

In everything we do, people are our focus. Therefore, through the Hans Lindner Foundation, we have been involved in social projects since 1991, operating our own multi-generation houses as well as independent foundations in Uganda and Romania. Moreover, we support young people and entrepreneurs in our region by helping them realise their ideas and secure a successful future.



3.600
Employees



1.400
Production
employees



2.100
Fitters



280
Apprentices



A Short Journey through Time

– from the foundation of the company until today

1965

Entrepreneur from the Start

At the age of 24, Hans Lindner sets out on his own with Akustikbau Lindner Ltd. His first commission is an acoustic ceiling, the substructure of which is created in his father's shed.



1970

First Production Site in Arnstorf

Ceiling and partition wall systems form our own production in our joinery are our first products.



1974

First Holiday Home for the Employees

Lindner constructs the first holiday home for employees on the Costa Blanca in Spain. Holiday homes with multiple residential units are developed across Europe.



1982

Start of Lindner Insulation Technology

Through the acquisition of various businesses, Lindner gains expertise in additional construction sectors and establishes the first foreign subsidiary in Austria.



2003

His Favorite Hobby: Brewing Beer

The innkeeper's son, Hans Lindner, fulfills a dream: He opens his own brewery next to Mariakirchen Castle, named Schlossbräu Mariakirchen.



2005

A New Manufacturing Site for Wooden Doors

In Ostrov, Czech Republic, construction begins on a modern production facility for Lindner doors – ranging from object doors to soundproof and fire-resistant doors with special surfaces and custom sizes.



2006

Building Envelope Completes the Full-Service Offer

The English facade specialist Schmidlin (UK) joins Lindner, completing the full-service offer. In Arnstorf, the production for system and custom facades is established.



2008

Launch: Shipbuilding

Lindner further expands the interior fit-out business sector: The first projects commence at the renowned Meyer Werft for the high-quality fit-out of cruise ships.



1987

Lindner Manufactures Flooring Systems

In a very short period of time, our raised and hollow floors become the third major area of business alongside Lindner's ceiling and wall systems.



1989

The Berlin Wall Falls and Opens New Markets

Partly owing to the relocation of the federal government to Berlin, the capital city becomes a primary place of employment for Lindner.



1991

The Hans Lindner Foundation

Hans Lindner establishes the charitable Hans Lindner Foundation. Its purpose is to support people in need and encourage the promotion of entrepreneurs.



2002

Certified Acoustic Laboratories

At the headquarters in Arnstorf, Lindner constructs its own acoustic laboratories. The project-specific adaptation of system products manufactured in-house is a core competency of Lindner.



2009

Green Milestone: Deutsche Bank, Frankfurt

The renovation of the office towers of Deutsche Bank in Frankfurt is a pioneering achievement for Lindner's Green Building projects, having been awarded LEED Platinum and DGNB Gold status.



2016

Agriculture and Forestry – Good Products, Good Life

With a strong focus on ecological and sustainable management, high-quality organic foods are produced under the Land.Luft brand.



2022

Always One Step Ahead: Digitalisation in Construction

Lindner's answer to construction 4.0? Specially developed tools and equipment from its in-house digital team and the IT department.



The Future of Construction is Circular

In 2023, Lindner is implementing the principles of the circular economy in construction into practice - this includes, among other initiatives, the LinLoop business models – rental and purchase with return options.



Lindner Worldwide

13

**Production Sites
in 5 Countries**

7.750

Employees from 75 Nations

Since the company's beginning, our headquarters in Arnstorf have served as the administrative centre and main production site, symbolising stability and growth. Over the decades, our company premises have expanded to include numerous production and office buildings, and are continuously upgraded in terms of technology and energy efficiency. Today, it spans a total area of around 200,000 m².

The Lindner Group is the largest employer in the Rottal-Inn district as well as one of the largest companies in

the Lower Bavaria region. From here, we handle 3,000 projects worldwide every day. We rely on a strong team of 7,750 motivated colleagues. Through the networking of branches throughout Germany and international subsidiaries, we ensure proximity to our customers. Thus, we strive together to find a suitable solution for every construction project. We take pride in our projects and in what we can accomplish. "There's no such thing as I can't!" – our customers feel that too.

15.000

tonnes of coils are being processed
annually in our production, this equates
to 2 lorry loads per day.

200.000

m² of Business Area in Arnstorf

1,3

bn € in Revenue

3.000

Construction Sites Daily

Many Years of Product Experience

Our Production Sites

In 1970, we began producing our own ceiling and wall systems at our first joinery in Arnstorf.

Since then, we have been manufacturing products for interior finishing, building envelopes, and

insulation technology at various locations in Europe. Arnstorf is the largest production site – almost all products from the Lindner range are made here. In addition, the headquarters is home to numerous production-supporting competence

centres, such as purchasing, logistics, quality assurance, research & development with an experimental workshop, and last but not least, the training centre for all commercial professions.

Arnstorf

Production of ceiling, floor and wall systems, lumineers, facades and clean rooms; manufacturing of high-quality carpentry work for interior fit-out and shipbuilding

- 64.250 m² production area
- 200.000 m² company premises

Dettelbach

Manufacture of drywall products

- 25.000 m² production area
- 57.000 m² company premises

Holleben

Prefabrication of sheet metal cladding

- 1.600 m² production area
- 18.000 m² company premises

Saarbrücken

Prefabrication of sheet metal cladding

- 1.800 m² production area
- 4.200 m² company premises

Abensberg

Prefabrication of sheet metal cladding

- 1.600 m² production area
- 18.000 m² company premises

Mettenbach

Production of customised specific lights

- 940 m² production area
- 2.100 m² company premises

Kolkwitz

Production of glass fibre concrete

- 2.700 m² production area

Ostrov

Manufacture of door and wall systems

- 18.200 m² production area
- 38.000 m² company premises

Vřesová

Production of raw gypsum as a raw material for raised floor panels

- 2.500 m² production area

Madunice

Production of high-quality carpentry work

- 3.200 m² production area
- 18.000 m² company premises

Hliník nad Hronom

Parquet production

- 1.080 m² production area
- 10.000 m² company premises

Thurrock

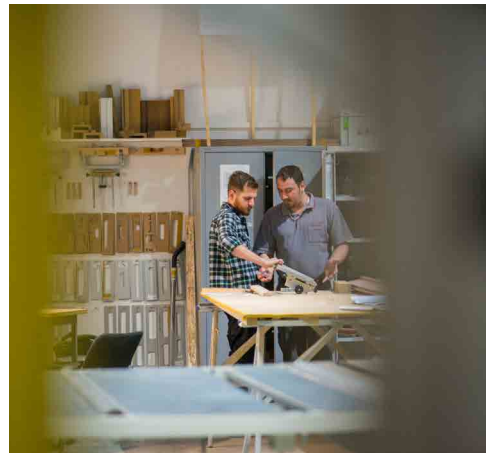
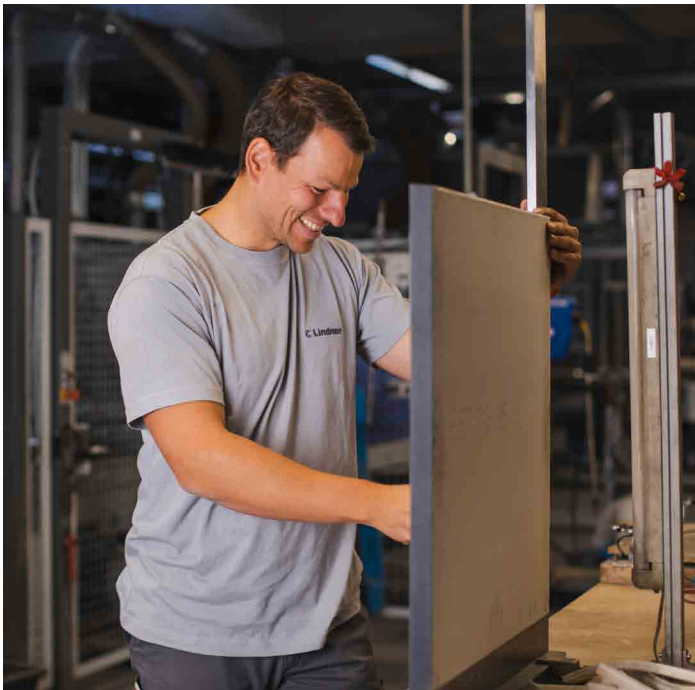
Manufacture of windows, doors and curtain walls

- 20.000 m² production area

Ruse

Manufacture of facades, facade cladding, facade elements and profiles as well as window and door systems

- 2.750 m² production area
- 73.200 m² company premises



Made by Lindner

Our Products and Services

The Lindner Group carries out both individual trades and the entire interior fit-out package. We are happy to combine this with Mechanical and Electrical services or to deliver a

completely turnkey project. Our own manufacturing facilities for floors, ceilings, walls, doors, lighting, and facades, along with our numerous in-house fitters, enable us to

implement complex, high-quality projects with tight schedules according to your specifications.



Floors

With our extensive range of flooring systems, we are market leaders: from raised and hollow floors to heavy-duty flooring and more.



Partition Wall Systems

Our glass and solid partition walls optimally combine sound and fire protection with aesthetic design and individual requirements.



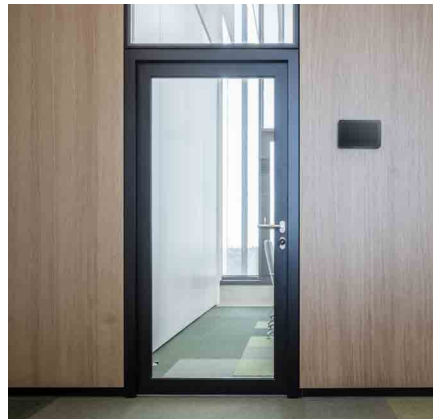
Luminaires

Our “Leuchtenfabrik” distributes, plans, develops, and manufactures innovative lighting fixtures, for example as system lighting or for individual projects.



Ceilings

Lindner’s metal ceilings – optionally with heating/cooling functions – combine functionality, design, safety, and sustainability.



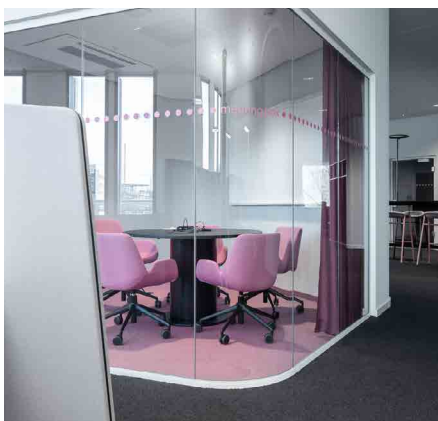
Doors

Drawing on many years of experience in the field of commercial and specialised doors, Lindner meets all demands for security, functionality, and aesthetics.



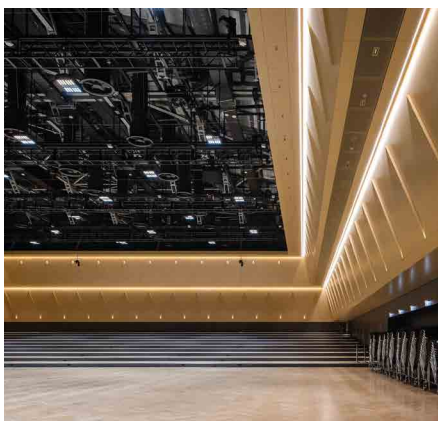
Sound Absorbers

For an effective improvement of room acoustics, the MUTE+ acoustic absorbers are available.



Room-in-Room Systems

Self-contained room-in-room solutions offer maximum freedom – both in use as retreats or meeting spaces and in design.



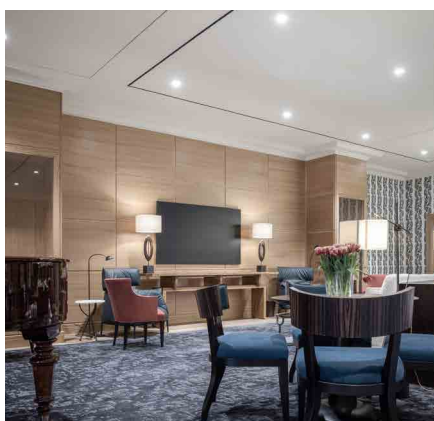
Panels for Walls and Ceilings

With a diverse range of coatings, colours, and materials, Lindner wall and ceiling claddings transform any room into an eye-catching space.



Dry Construction

Dry construction comprises various finishing constructions for walls, ceilings and floors, which are installed or further processed using dry construction methods.



General Planning

We support you in every phase of your construction project - also as a planner. You can receive our services as a package or individually.



Fitting & Service

Around 2,000 own fitters and skilled workers realise our customers' wishes on our construction sites every day.

Further Services

- Facades
- Scaffolding
- Insulation technology
- Clearance of harmful substances
- Clean room technology
- Technical building services (TGA)
- and many more

You can also find all information about our services on our website at lin.link/products



Lindner – Where Our Heart Beats

In close collaboration with clients and architects, we are not only a strong partner for the complete interior fit-out – from dry construction and M&E services to individual pieces of furniture – but also for the building envelope. We undertake both the execution of individual trades and the complete fit-out services for projects of all sizes.

Modern architecture combines functionality and aesthetics with the utmost safety. Our designers, technicians, engineers, and fitters ensure the realisation of your visions – so that there are no limits to your creativity.

Our areas of application:

- tenant fit-out
- railway stations
- airports
- office and administration buildings
- hotels and resorts
- clean rooms, laboratories and operating theatres
- concert halls
- schools and universities
- tunnels
- government buildings
- shopping centres
- studios
- and much more

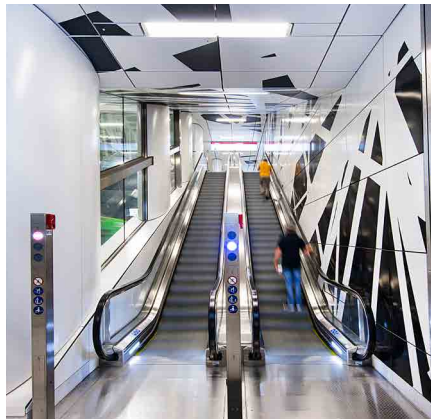


Areas of Application



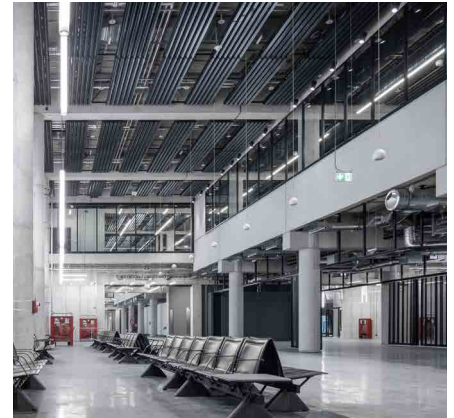
Tenant Fit-Out

Customised spatial concepts, reusable fit-out products, as well as rental and take-back offers provide tenants and landlords with flexibility in design, use, and financing.



Railway Stations

Railway and underground stations cannot be compared with ordinary buildings and often require very specialised construction assemblies.



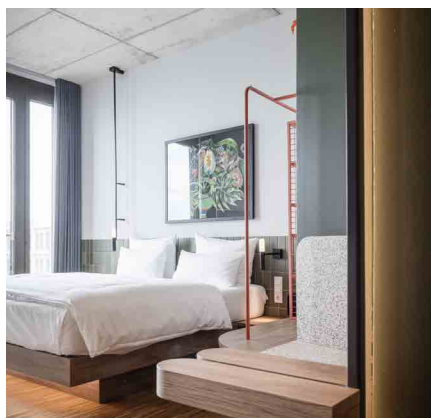
Airports

Airports combine demanding, representative architecture with high functionality and safety for a pleasant stay and good travel.



Office and administrative buildings

The requirements for new work environments and office workplaces are constantly changing. We offer tailor-made concepts and adaptable fit-out packages from a single source.



Hotels and Resorts

Our core competencies for hotels and resorts include interior fit-out with high-quality carpentry services as well as FF&E packages.



Cleanrooms, Operating Theatres and Labs

Whether it's sliding doors, recessed lighting, walls, ceilings, air conditioning, radiation, fire or sound insulation – Lindner offers complete solutions suitable for cleanrooms.



Concert Halls

With concert halls, the focus lies on optimal room acoustics in combination with design and high functionality.



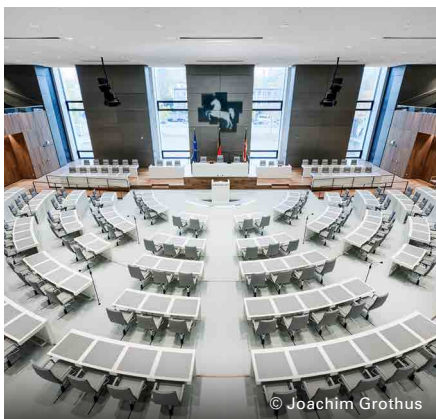
Schools and Universities

We have a unique range of references in the field of educational construction, from the supply of system products to complete fit-outs.



Tunnels

Planning and implementation of fire protection concepts up to the production and installation of complete fire protection ceilings and wall claddings.



Government Buildings

Whether it's the German Bundestag or the National Assembly in Hanoi, as well as German Embassies around the world - we construct government buildings with the highest security standards.



Shopping Centres

Numerous examples from recent years have demonstrated how modern properties can contribute to contemporary retail. Lindner brings its strengths to both small and large department stores: interior fit-out, building services and facade construction.



Studios

Radio and television studios require project-specific solutions to ensure optimal room acoustics and high functionality. Lindner manages the versatile interplay of floor, ceiling and wall to meet all requirements.

There's No Such Thing As "I Can't"

We can do everything – from individual trades to turnkey solutions

Our core business: Interior fit-out incl. building services, building envelope and insulation technology.

Our mission: Building new solutions.

Our offer: The development and implementation of tailor-made yet flexible project solutions and room concepts.

Our competencies range from planning, design, and manufacturing to the assembly and maintenance of projects of any size and complexity. Our comprehensive product and service portfolio for almost all applications is unique. Just like the buildings that we realise together with our clients, developers, architects, and the people who bring the buildings to life.



Take a look behind the scenes – Lindner company film





Reliable Partner

From planning to use

From the initial idea to the finished projects – depending on the task and project, we take on a variety of roles: Are you looking for someone to take overall responsibility for your project? As planners and implementers, we take charge of executing the project for you and coordinate the various trades. In addition, we also cover the role of general planner and create a comprehensive concept for you, including operator models and building maintenance. In doing so, we take on the planning and coordination of the construction project from start to finish. Moreover, we act as complete

interior finishers and thus take on the full handling of your project, including planning, coordination, and execution. And even with construction financing, the Lindner Group stands by your side as a financially strong partner.

Sustainable Growth – more safety for your project

For over half a century, we have continuously grown and evolved with each project, learning and developing along the way. Since its founding in 1965 by Hans Lindner, the company has been a family affair.

The succession is now in the hands of the second generation. Then as now, the Lindner Group stands on very solid economic foundations.

- Equity ratio: 59%
- Annual total investment volume: approx. 71.9 million Euros
- Excellent creditworthiness (confirmed by Deutsche Bundesbank, Coface Rating, and Hoppenstedt)





Hochmoderne Arbeitswelten vereint mit optimalem Arbeitsumfeld



Tenant Fit-Out – Design & Build

Flexible room concepts that work

For the development of your rental spaces into a unique experiential world, one theme is central to us: You!

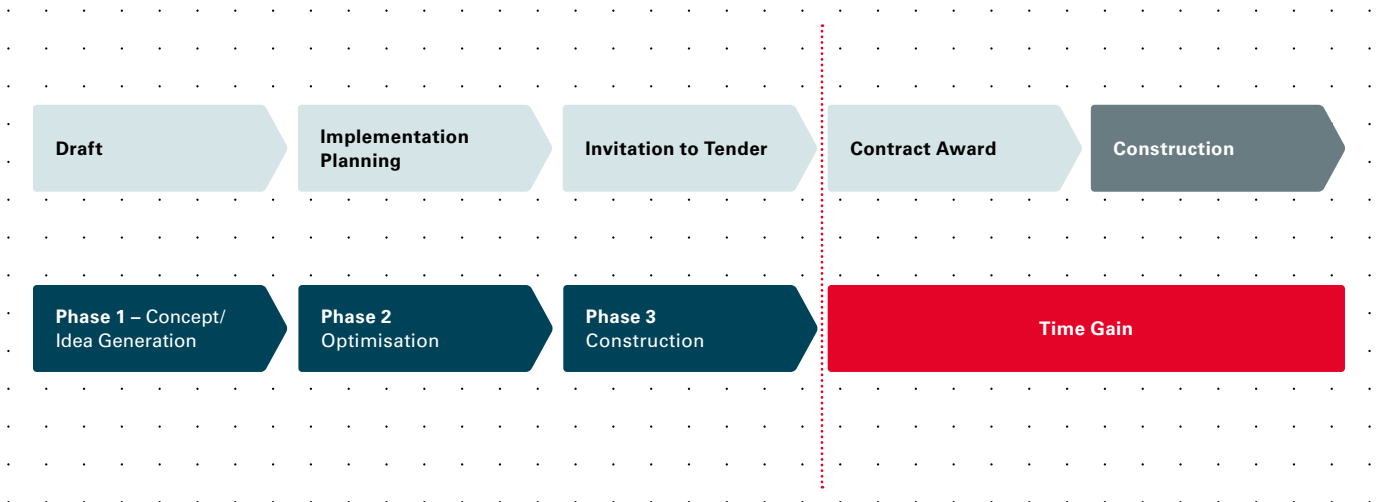
Our solutions are as individual as your wishes and the structural conditions for new construction, refurbishment or revitalisation. Especially in existing buildings or office renovations, we see one of the greatest potentials: Changed working methods coupled with more home office offer new opportunities for optimising space e.g., in open-plan offices and in the design of work environments. At all times, we focus on

user satisfaction, based on individual room design and improved room quality through optimal acoustics, indoor climate, lighting, etc. Also, other room uses will face no obstacles in the future thanks to our flexible and revisable fit-out systems.

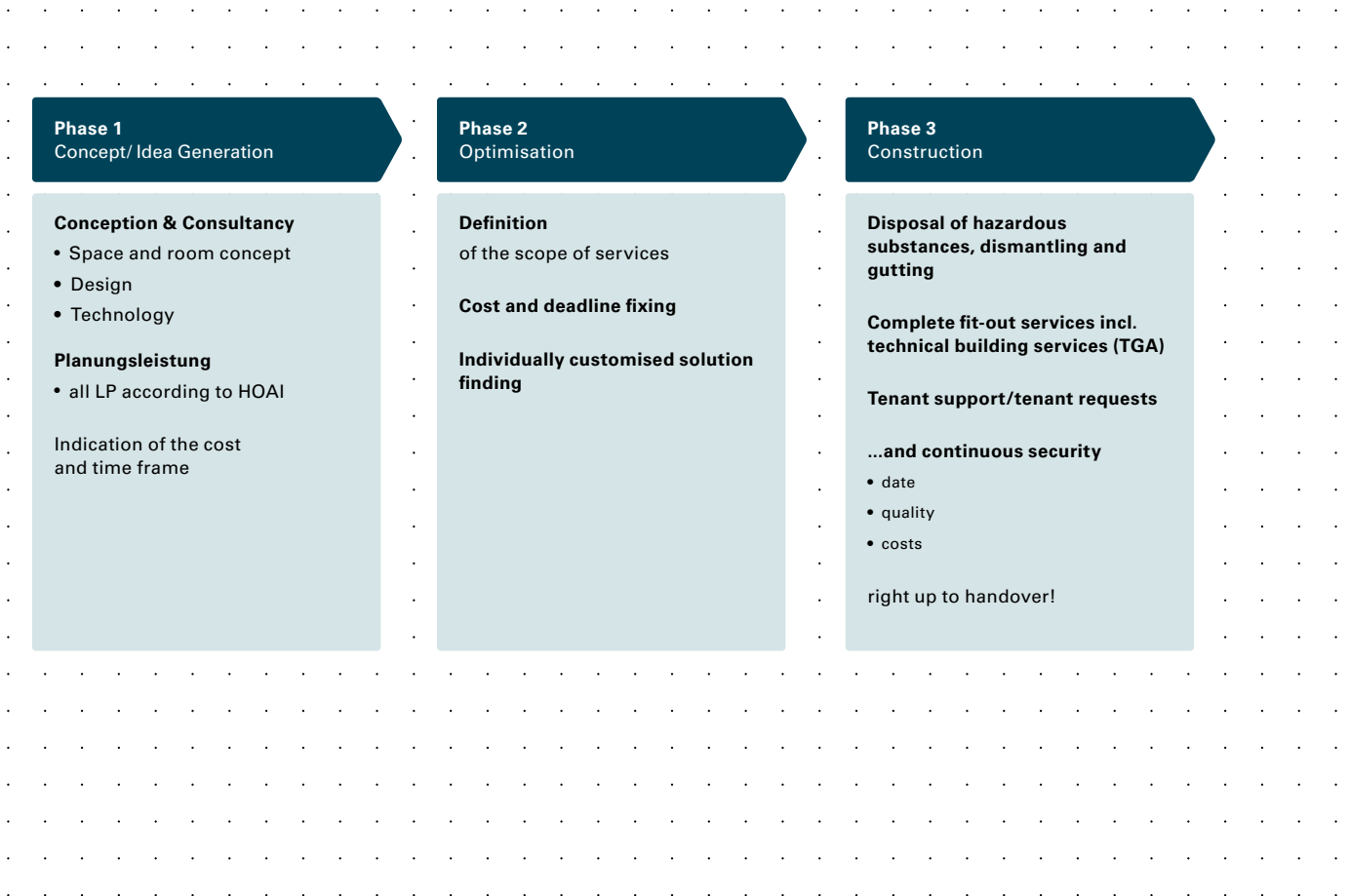
We offer you a complete package, starting with precise consultation and moving through professional planning including concept development and needs assessment to successful implementation and even beyond. In this process, our specialists

from Research & Development, departments such as Green Building, Workplace Innovation, Acoustics, Fire Protection, etc., as well as from the individual product areas and project management, come together and focus on maximising the potential of your rental property.

Comparison common project process vs. project process tenant fit-out – Design & Build at Lindner



Tenant fit-out project process – Design & Build in detail





Complete Fit-Out

Everything from a single source – that’s our motto! Since our founding, we have continuously evolved and today we are not just a product manufacturer and fit-out specialist, but also a financially strong complete fit-out provider with years of experience. From concept and execution planning to the turnkey handover, we take on entire construction processes: We realise both small and large projects,

in Germany and around the world. In doing so, we accompany your project in every phase and advise you on functionality, sustainability, technical requirements, as well as constructive and design details. Thanks to our own production and Research & Development, we can also provide you with project-specific solutions tailored to your specifications.

- many years of experience and comprehensive expertise
- cost and deadline advantages through minimisation of interfaces
- large network of specialised partner companies
- high proportion of in-house work thanks to in-house production
- assumption of all risks

Refurbishment

By carrying out high-quality renovation and revitalisation of properties, we bridge history and modernity and simultaneously address a central challenge of the construction industry: It is essential to find user-oriented and future-focused solutions for the preservation of the building substance. In doing so, aspects such

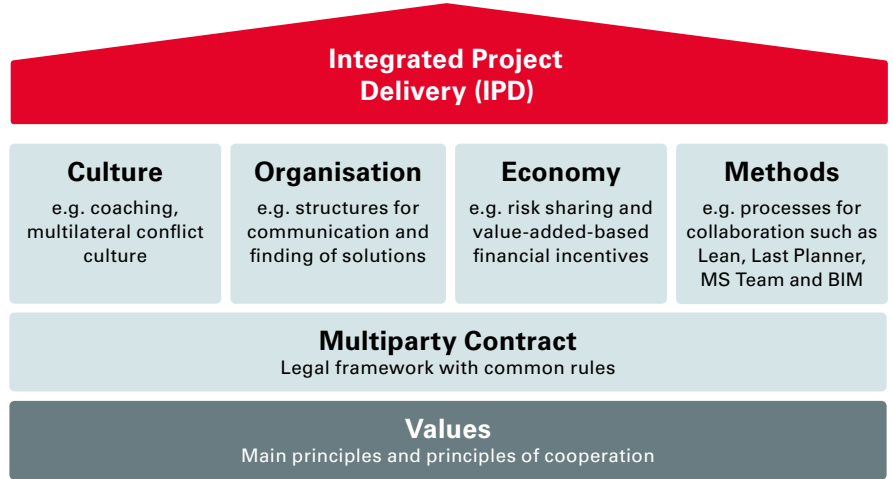
as heritage protection, sustainability, economic efficiency, as well as energy and technical optimisation must not be overlooked. We will create a comprehensive concept for your building renovation – taking into account your wishes and the project-specific requirements.

Pausing operations for building renovation? Not at all! Demolition while operations continue is a matter of trust. We find a project-specific solution that ensures maximum safety for everyone in the building during the renovation and simultaneously maintains the use of many rooms.

Alliances for the Future

IPD – Integrated Project Delivery

“Let’s build together”, the Lindner credo can be translated into the IPD model. Integrated Project Delivery is a multi-party agreement, consisting of clients, architects, specialist planners, and executing trades, who work together from the beginning under the motto “Best for Project”; optimising complex project processes together, communicating transparently, and thus always keeping an eye on the adjustment screws of cost, time, and trade execution. For us, it’s an ideal model.



From Theory into Practice



Siemensstadt Square Berlin

An “urban neighbourhood of the future” – the planning and construction of the new Siemensstadt Square focuses on cooperation. The signing of the multi-party agreement paved the way for various new buildings. As one of the partners, Lindner is responsible for the interior fit-out and façade. In

addition to openness and transparency, innovative digital methods also play a major role in the project: the process is optimised with lean construction management and the ongoing planning of the overall project is handled using a data model model.



3 Schools Bremerhaven

The multi-party contract for the “3 Schools Bremerhaven” is in many ways a flagship project: Not only are the different educational concepts from cluster schools to open learning landscapes new - the project is also the first public building project to be realised according to the IPD model. Together with clients, architects,

specialist planners, and the other executing trades, we are working on an efficient and transparent project execution: As one of the alliance partners, Lindner is responsible for the execution of the interior fit-out, the technical building services, and the façade.



Research & Development

Craftsmanship and engineering skills

The Research & Development department at Lindner Group encompasses over 200 employees from a variety of engineering and construction disciplines, including building services, building physics, metal construction, as well as traditional fit-out and craft professions.

Our strength lies in the development of new products and even more in the overcoming of project-specific technical challenges, the “building

new solutions”. In doing so, we combine the expertise of various engineering disciplines, the experience from thousands of projects, and the capabilities as a product manufacturer.

Every product and project is not only tested against all relevant standards and building regulations but also against your desired specifications. With a reliable network of partners (material testing institutes and universities) and a unique

manufacturing depth, Lindner is able to coordinate all products with each other and with the project conditions.

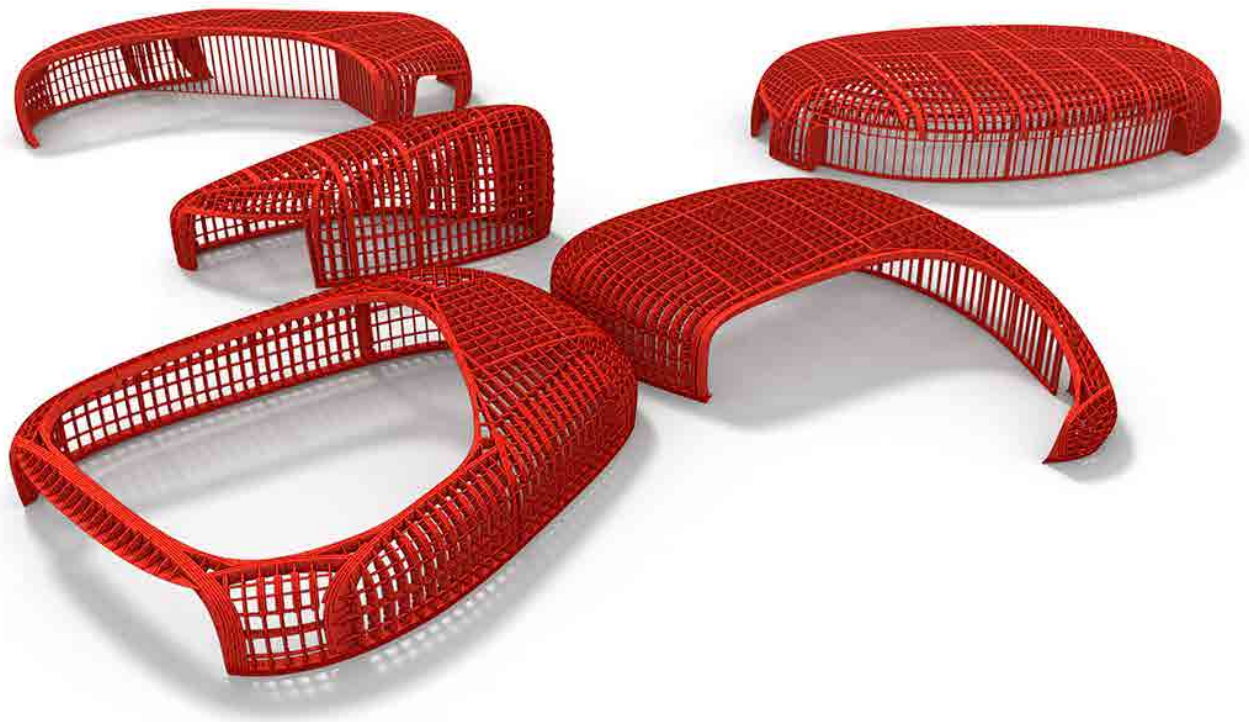
Thus, we design, engineer, and size from scratch steel structures, glass facades, aluminum constructions, delicate lightweight constructions, and custom constructions of all kinds, provide mock-ups and entire sample rooms for these, and ensure the consistent implementation on the construction site.

Our expertise and specialised disciplines at a glance

- acoustics
- construction in existing buildings
- building climate
- accessibility
- BIM
- fire & smoke protection
- durability
- Green Building
- Lean Construction Management
- surfaces
- structural design
- safety solutions
- Workplace Innovation

You can find all our Research & Development services on our Website at lin.link/r-and-d





Digitalisation

Lindner's answer to building 4.0

Lindner began early to engage with digitalisation, going far beyond just acquiring smartphones and tablets.

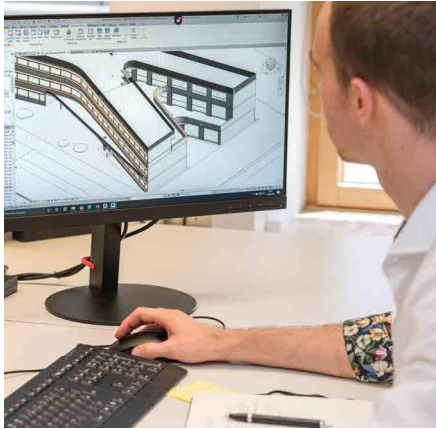
Over the past few years, we've examined processes throughout the entire company, identified areas for improvement, and developed solutions. In many cases we have made remarkable progress through the use of carefully selected hardware and software, along with adapted working practices. We are all working together

to digitalise processes, either wholly or partially, where new technologies offer us a clear advantage. At the same time, we are aware that no app can replace the knowledge and skills of an employee – and we wouldn't want it to.

Therefore, we continuously adjust our digitalisation goals to keep pace with technological change and our industry, and we launch projects in various areas. The Lindner Digital team is the central point of contact

for this. This positions us well to remain competitive. Our employees are constantly developing their skills to implement changes in working practices in a forward-looking manner and to proactively seek opportunities for improvement in their work.

Presenting the complete landscape of IT solutions here would far exceed the scope, so below you will find just a small selection of some key systems.



Building Information Modeling (BIM)

BIM is a method for the software-based creation and management of buildings. It represents a consistent focus on aligning all technical and commercial processes towards a continuous, highly integrated value creation process. At the heart of the method is a virtual model of the building, which is loaded with all data from construction planning, execution and facility management. This marks a milestone for increased effectiveness, quality, transparency and flexibility. As a manufacturer of highly customisable system products, Lindner offers its customers a wide range of parametric BIM objects for free download. These objects are equipped with extensive intelligence and can be parameterised by the planner with a high degree of freedom, taking into account the actual manufacturing possibilities, and quickly integrated into the building model.

Free download of
parametric BIM
objects here
lin.link/bimobject



Digital Building Documentation

The analogue construction archive is going digital! At Lindner, alongside traditional surveying, we also offer digital building surveys: Using state-of-the-art 3D laser scanning technology, we create a long-term, adaptable knowledge base about the condition of the building and the details of the spaces. This helps avoid planning errors, time loss, and high costs.

Our 3D-Scanner measures rooms and buildings simply, quickly and accurately at a 360° angle. The resulting point clouds are then modelled and made available for various software tools – as needed in 2D, 3D, or BIM-compatible formats. These data serve as the basis for further planning.



Lean Construction Management

We commit to agreed deadlines and go to great lengths, or as the saying goes, “move heaven and earth” – though not all at once. By practically implementing Lean Construction Management, we achieve remarkable effects on our construction sites: optimised assembly processes, higher quality of execution, and greater certainty in terms of scheduling and costs.

We lay the groundwork for this together with all parties involved before construction begins, in joint planning sessions between clients, designers, and contractors. With the start of assembly on-site, we apply a continuous flow effectively, tailored to the complexity of the construction task, the upstream and downstream trades, the time specifications, and the logistical, spatial, and other conditions.

We Take Responsibility

– not just with our floor systems

Sustainability is Add.Vantage for everyone

Our actions today shape our future - this is why climate-conscious construction and the principle of circular economy are so important now.

We have been engaged in "Sustainable Construction" since the 1990s and were founding members of the DGNB. In 2009, we established our own Green Building department. Since then, we have continuously expanded our expertise in building certifications, Green Building Management, and consulting for circular new construction and renovation.

Similarly, we offer Environmental Product Declarations, and the majority of our products are tested according to the Cradle to Cradle Certified® product standard. This is because detailed information and documentation, aided by digital tools, material passports, and product databases, are fundamental for Urban Mining and closed material cycles in construction practice.



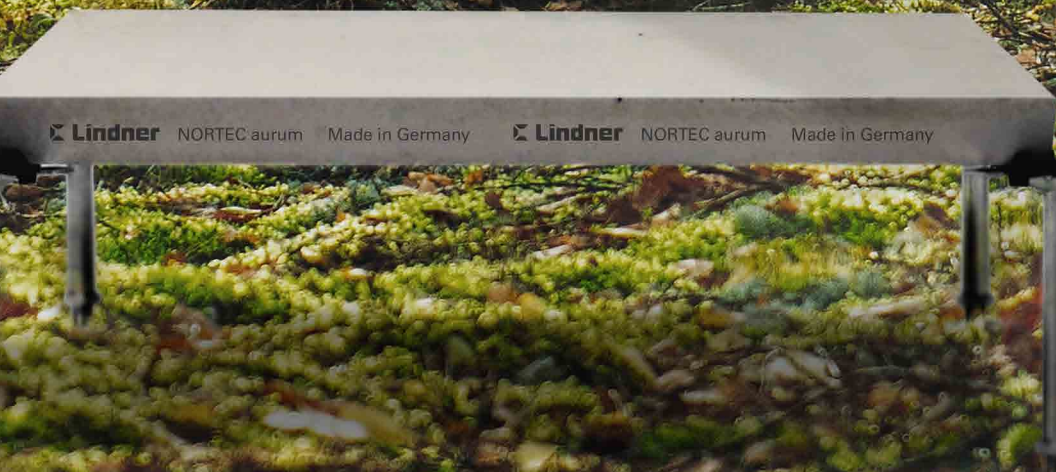
Mitglied der
DGNB
Deutsche Gesellschaft für Nachhaltiges Bauen
German Sustainable Building Council

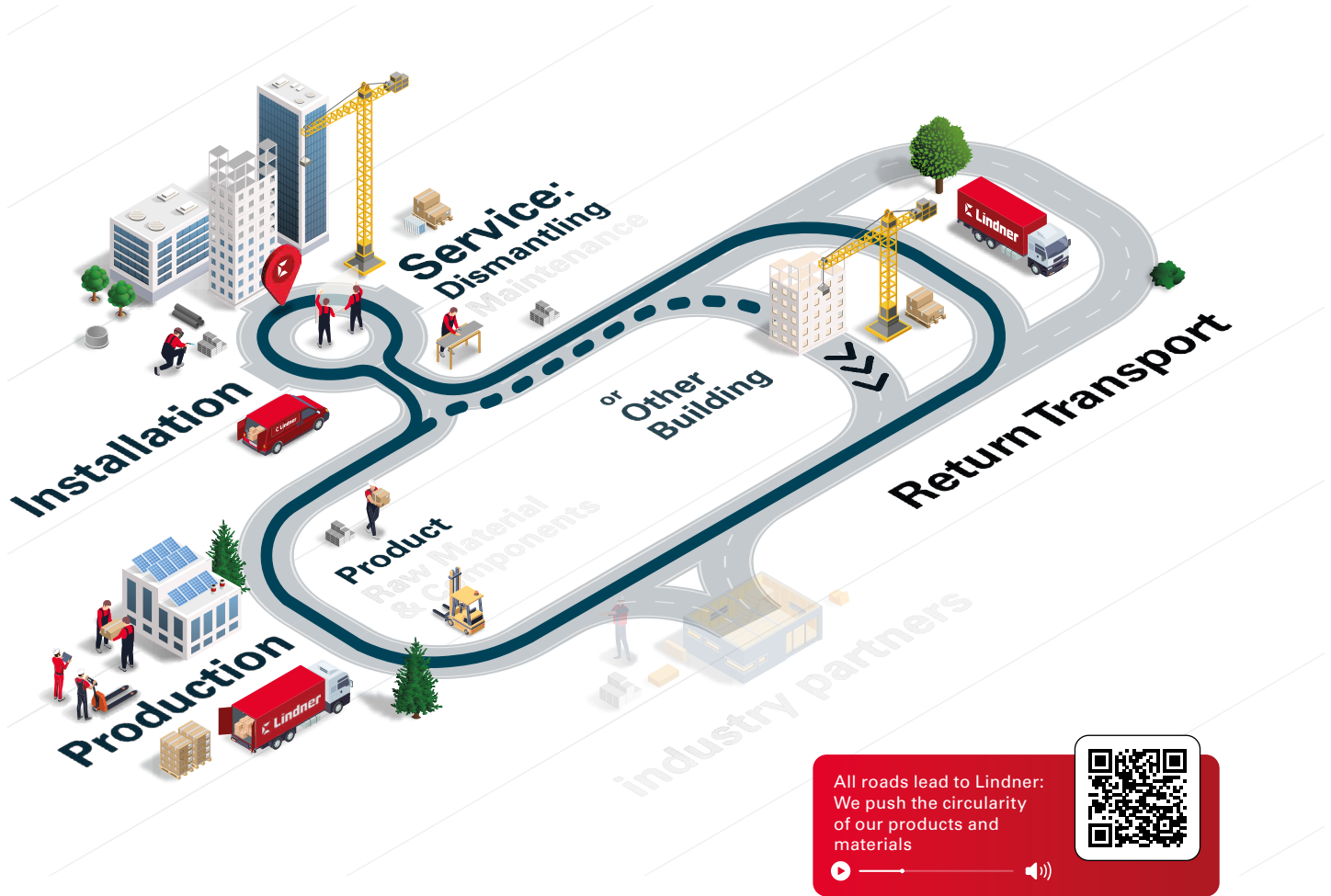


BREEAM®



**Concular
Circularity
Partner**





The Future of Construction is Circular

We live material cycles

This is why we think, plan and produce in closed material cycles. All processes in our company are aimed at:

- continuously minimising the consumption of energy and resources,
- avoiding waste and toxic substances,
- using recyclable materials,
- employing renewable forms of energy,
- utilising water in closed cycles,
- designing products to be as flexible, adaptable, and demountable as possible, and
- considering and positively influencing the impact on humans and nature.

For us, Circular Construction is a path towards climate neutrality. Thus, we not only circulate materials in closed loops but also offer take-back and rental options for interior fittings. Building certifications, life cycle assessments and CO₂ footprint calculations are just as much a part of our service portfolio as the planning of “healthy” spatial concepts.

Our Take-Back and Rental Offer

Circular business models with LinLoop

We're putting the circular economy into practice! With LinLoop, we offer flexible rental and return options that combine economic, ecological, and social factors. In doing so, we ensure careful management of our resources while simultaneously enabling the individual design of your workspaces.

Purchase with Return Option

In our return model, you purchase our system products as usual – meaning you pay the purchase price and become the full owner. Unlike a standard purchase, an agreement is made in addition to the contract for work, in which both parties commit to a return/repurchase. After a period of 10 to 30 years, you can return the products and receive an attractive

residual value, which typically covers the costs of dismantling. Optionally, you can also enter into an annual maintenance contract with us.

Rental Offer

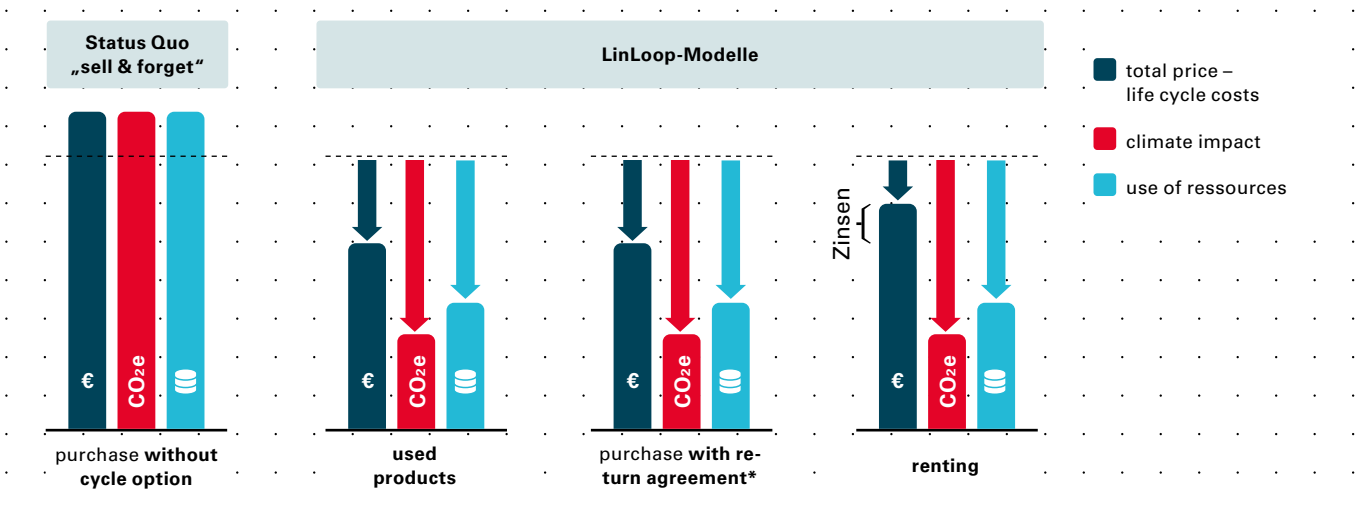
Whether you want to rent raised floors, ceiling systems, partitions or the complete interior fit-out – we make it possible!

With our rental model, we enter into a lease agreement with you as the building owner for a period of 5 to 10 years. Thanks to monthly payments, you improve your liquidity, increase the equity ratio and shorten the balance sheet. An annual inspection, as well as the assembly and disassembly of the fit-out products, are included in the rental price.

Your Advantages at a Glance

- Active contribution to climate and resource protection as well as CO₂ savings
- No disposal risk
- No pre-financing: improves liquidity and equity ratio, and shortens the balance sheet (in the rental model)
- Attractive resale proceeds (in the purchase with return option)
- Flexibility in terms of duration and product
- High-quality products that remain in the cycle
- All-inclusive package: consultation, planning, assembly, and disassembly – all from one source

Renting is the new Purchasing



* ecological and economical impacts depending on exercising the right of return or choosing the exit-option

Fit-Out Region Northwest

At home in your region

The Lindner Group is a family business through and through: The open and familial way of interacting stems from the principle that every problem also has a solution – or as the founder Hans Lindner says: „There’s no such thing as I can’t“ with us. Our corporate family forms a network of business units, branches, and subsidiaries around the world. These are consolidated under Lindner SE, the largest company within the Lindner Group.

The core business of Lindner SE is interior fit-out – in production, sales and execution. This includes the marketing of finishing products from our own production as well as the realisation of interdisciplinary projects in drywall construction up to complete interior finishing. The business division Fit-Out Northwest is one of six fit-out business divisions of Lindner SE in Germany. It primarily takes care of projects from Cologne through Düsseldorf to Hannover. Thus, we are always locally present and your contact is by your side at all times. Wherever your project may be, you can be assured that we are locally available to you.



Region Northwest

Your contact persons in the region

Düsseldorf

Kölner Straße 18
40885 Ratingen
Tel. +49 2102 7408-4646
Duesseldorf@Lindner-Group.com

Cologne

Alfred-Nobel-Straße 1
50226 Frechen
Tel. +49 2234 996-7688
Koeln@Lindner-Group.com

Hannover

Lübecker Straße 5a
30880 Laatzen/Rethen
Tel. +49 8723 20-7134
Hannover@Lindner-Group.com

Business Unit Manager

Walter Leneis
Walter.Leneis@Lindner-Group.com

Sales Consultant

Kamil Sosnowski
Kamil.Sosnowski@Lindner-Group.com

Branch Düsseldorf

Franz Grübl
Franz.Gruebl@Lindner-Group.com

Branch Cologne

Fritz Kugler
Fritz.Kugler@Lindner-Group.com

Branch Hannover

Klaus Eiblmeier
Klaus.Eiblmeier@Lindner-Group.com

Tenant Fit-Out | Design & Build

Ulrich.Maier
Ulrich.Maier@Lindner-Group.com

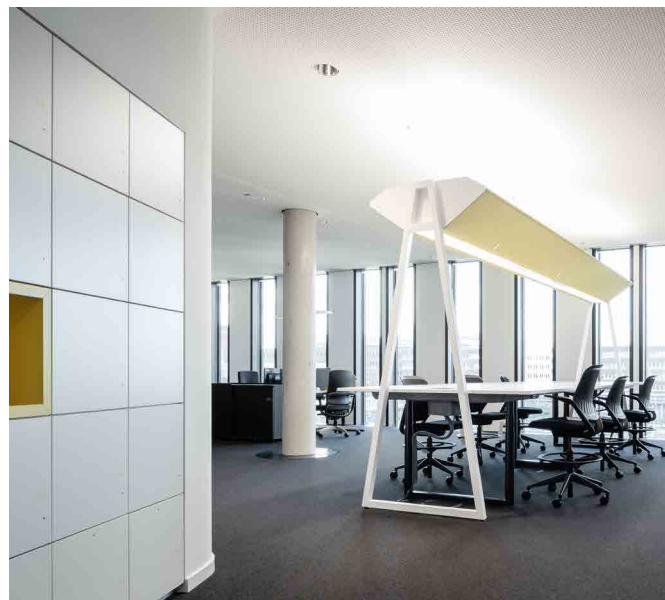
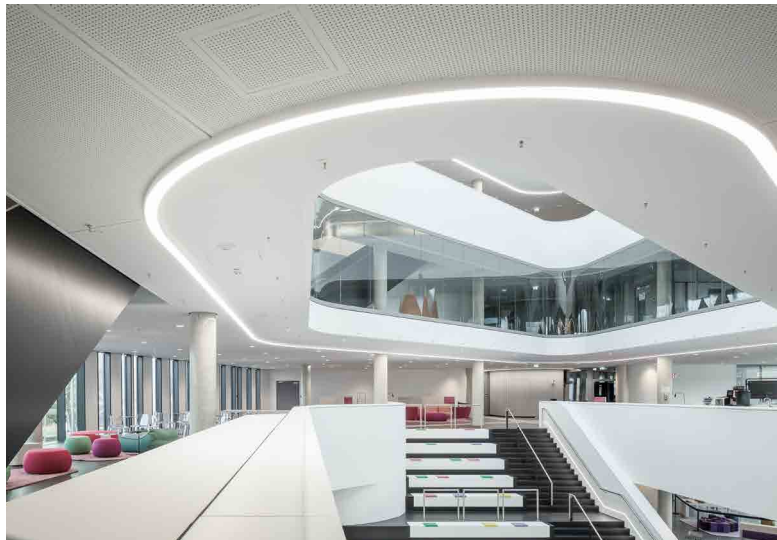
Complete Fit-Out

Andreas Tremmel
Andreas.Tremmel@Lindner-Group.com









Covestro Leverkusen, Germany

The new administrative building, designed by HENN Architects for the leading supplier of polymer materials, offers optimal working conditions across six floors for up to 750 employees.

Lindner SE, acting as the main contractor, was responsible for the interior construction: from drywall and customised fit-out solutions to subcontractor services. In addition to system walls, built-in furniture, and ceiling/floor systems produced in-house, designer lights and floor-to-

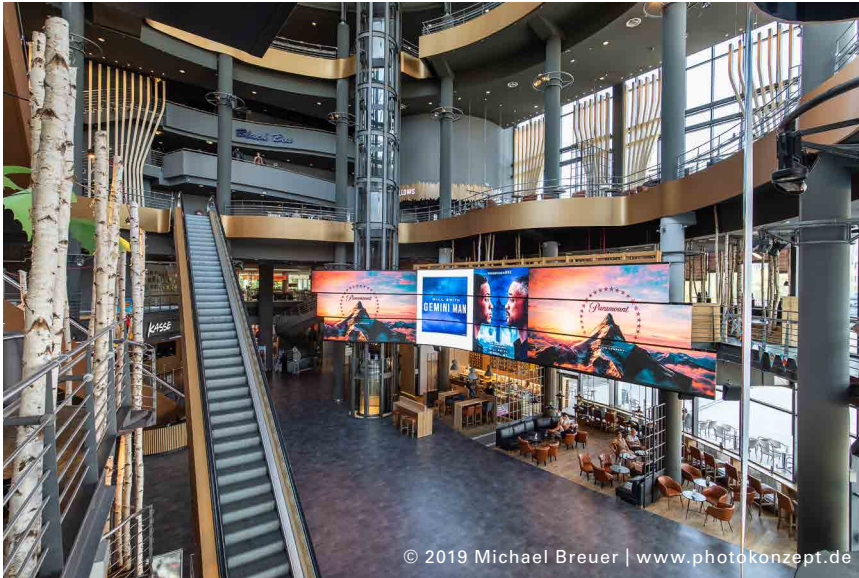
ceiling glass walls ensure ideal room conditions. The NORTEC raised floor provides ample installation space across more than 12,000 m² in the office areas, while the FLOOR and more[®] power raised floor was installed in heavy-duty areas. Thanks to the perforated Plafotherm[®] GK HEKDA[®] heating/cooling ceiling system, excellent acoustics and room climate were also achieved..

Architect

Henn Architekten,
München, Deutschland

Services

- plasterboard heated/chilled ceiling
- glass partition walls
- aluminium frame doors
- furnishings
- plasterboard wall systems
- floor coverings
- hollow floors
- raised floors



Cinedom Cologne Cologne, Germany

Opened in 1991, the Cinedom multiplex cinema in the Mediapark in Cologne is the fifth largest cinema in Germany with over 3,000 seats and 14 cinema screens. Connected by numerous footpaths, the buildings are arranged in a semi-circle around a central square. A comprehensive renovation and a new colour scheme of warm grey tones and gold elements were intended to enhance the quality of the foyer. The focus was on the flooring, which was carried out by Lindner: a parquet surface in light wood look complementarily combined with a

dark-grey structured carpet. The dome, 35 m high, also received a new coat of paint by Lindner. The motto "More Glamour" in the new Cinedom was mainly implemented through warm gold tones, especially by the wrapping of escalators and ceiling edges, as well as by metal slats along the facade, which also serve as sun protection. Another highlight, in the truest sense of the word, is the mirrored soffit of the canopy in the entrance area. The sanitary facilities were also completely renewed and adapted to the new design concept.

Client

Topeka Kino GmbH,
Köln, Deutschland

Architect

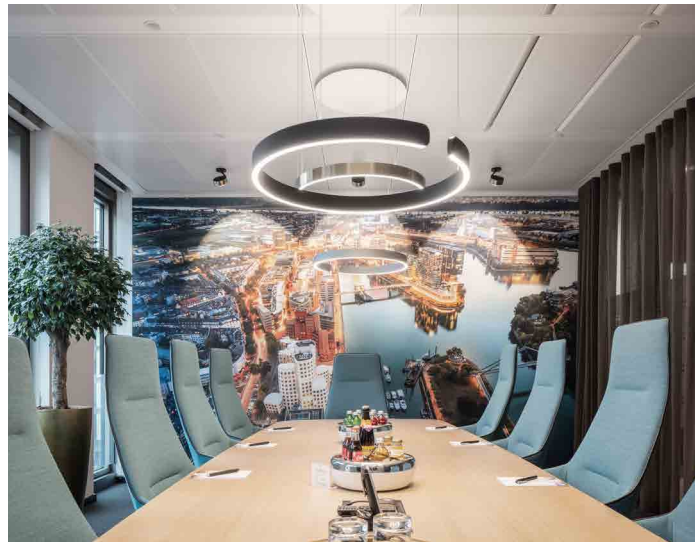
MAAS & PARTNER,
Münster, Deutschland

Services

- Interior fit-out







KÖ Quartier Düsseldorf Düsseldorf, Germany

Completed in May 2020, the KÖ-Quartier is considered the most modern office building in Düsseldorf's banking district. Its central location and excellent facilities make it one of the most popular sites for exclusive offices and shops – all on an area of 20,800 m². The three separate entrance areas enable efficient access to the offices in an elegant setting, for both clients and staff. The highlight of the new building is the spacious roof terrace, offering extensive views of the North Rhine-Westphalian capital. In addition, the KÖ-Quartier features a green inner courtyard and an integrated underground car park with

direct access to the rental spaces. The building was designed by Steam Architects, a local architecture firm in Düsseldorf.

Client

KQ Development S.C.S, Luxemburg

Architect

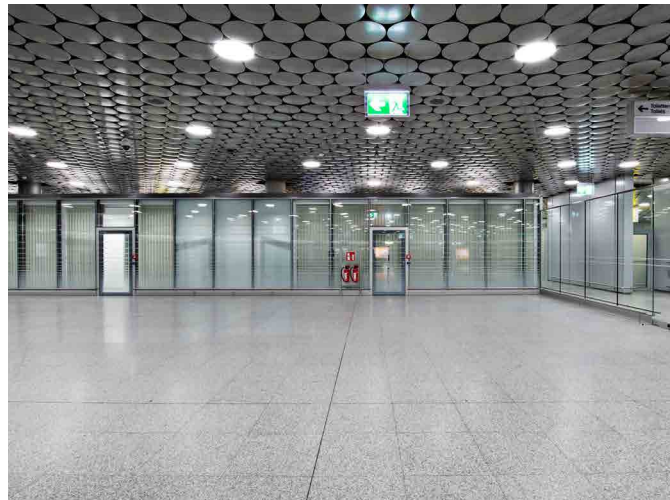
STEAM Architekten, Düsseldorf, Deutschland

Site Management

Diete + Siepmann
Ingenieurgesellschaft mbH, Kaarst, Deutschland

Services

- glass partition walls
- floor coverings
- hollow floors
- aluminium frame doors
- steel frame doors
- wooden doors
- heated/chilled canopy ceiling
- wall coverings



Airport Hannover-Langenhagen, Refurbishment Terminal C Hannover, Germany

In response to new security requirements for passenger and hand luggage checks, Hannover Airport in Langenhagen has decided to expand its terminals. Following improvements made to Terminal A in 2014, the airport management planned similar measures for Terminal C. Among other things, this was intended to connect the buildings, thereby creating both more efficient and quicker routes between the terminals and modern

retail spaces. As a full-service provider, the Lindner Group played a significant role in turning the airport's vision into reality through various drywall and metal construction works. In addition to installing numerous plasterboard walls and ceilings, Lindner was responsible for additional installations such as high-quality wooden and steel sheet doors with integrated fire protection, as well as various gate systems.

Services

- door and gate systems
- wooden doors
- plasterboard ceiling systems
- plasterboard wall systems
- F0 metal ceilings
- metal works





RKW Architekten Düsseldorf, Germany

RKW Rhode Kellermann Wawrowski Architektur + Städtebau is one of the most successful German architectural firms, headquartered in Düsseldorf. The firm operates globally in the fields of architecture, interior design, and urban planning. Lindner was responsible for the refurbishment works of the headquarters in Düsseldorf.

The refurbishment was carried out on the existing structure.

Client

Nordrheinische Ärzteversorgung

Architect

RKW Rhode Kellermann
Wawrowsky GmbH & Co. KG

Services

- Hollow floor
- F0 metal ceilings
- Glass partition walls
- GK ceiling systems

- GK wall systems
- Wooden doors
- Aluminium tubular frame doors
- Floor covering work
- Floor coating work
- Screed work
- Painting, wallpapering and varnishing work
- Planning services
- Carpentry work



Torhaus Expopark MS4 Hannover, Germany

Designed by the architectural firm BKSP, the Torhaus Expopark in Hannover serves as a representative entrance to the entire site. Covering an area of 9,500 m², the new office and administrative building combines individually customisable office spaces with energy efficiency and comfort through innovative and tailored building technology. The Lindner Group played a significant role in the realisation of the interior fit-out with various trades: Metal ceilings not only improve the appearance but also the acoustic comfort, while integrated

heated/chilled ceilings are central to the energy-efficient climate management. Flexible partition wall systems ensure individual room design. Innovative floor systems also facilitate the integration of electrical installations, increasing efficiency and comfort in the office areas.

Client

Projektgesellschaft GmbH & Co –
Mailänder Straße – KG,
Hannover, Deutschland

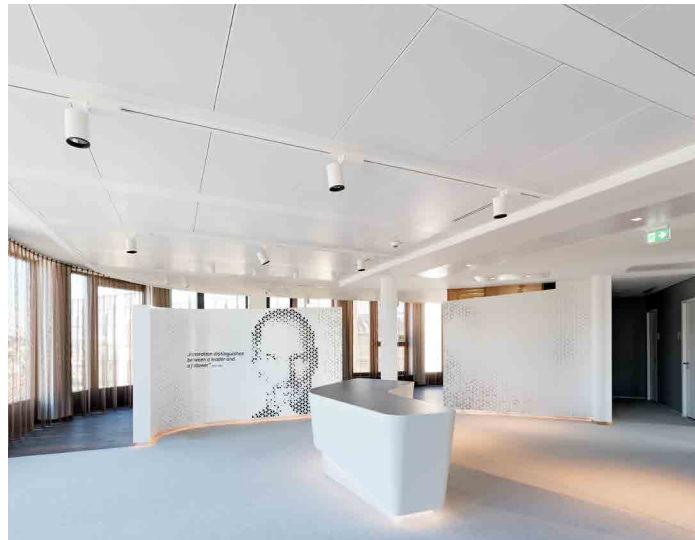
Project Management

Delta Bau AG, Hannover, Deutschland

Services

- Metal heated/chilled ceilings
- Hollow floor
- Raised floor
- Glass partitions
- Partition walls
- GK ceiling and wall systems
- Plasterboard frieze





Coeur Cologne Cologne, Deutschland

Located in close proximity to Cologne's main train station and the Cologne Cathedral, Coeur Cologne is truly situated in the heart of Cologne. The six-story building offers around 14,000 m² of rental space, featuring efficient space allocation and high-quality building facilities. With its sustainable building concept, it aims for a DGNB Silver certification. Lindner SE was involved in several performance areas in the interior fit-out of Coeur Cologne. Lindner extensively installed ceiling systems with integrated heating/cooling technology. Through intensive consultation, a concept was developed

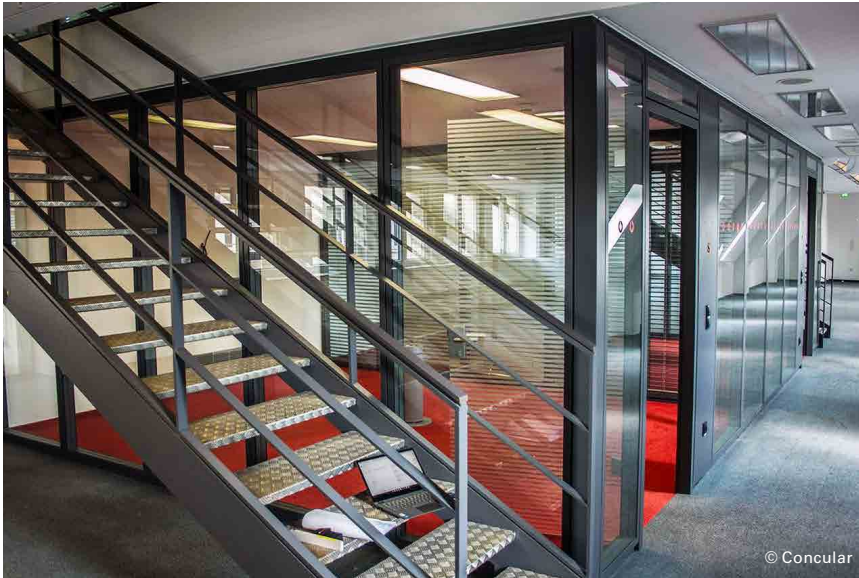
in collaboration with the responsible architectural firm msm meyer schmitz-morkramer, combining Plafotherm® B metal grid heated/chilled ceilings with Plafotherm® GK Hekda plasterboard heated/chilled ceilings to create an efficient and sustainable system for building temperature control. Another area of expertise was the installation of hollow and raised floor systems of the types CAVOPEX, FLOOR and more®, and NORTEC. In addition, Lindner provided the glass partition wall systems Lindner Life Pure 620 and Freeze 137, the latter partly in a sophisticated curved design.

Architect

msm meyer schmitz-morkramer,
Köln, Deutschland

Services

- metal heated/chilled ceilings
- plasterboard heated/chilled ceilings
- doors
- hollow floors
- raised floors



Kooperation Behrensbau – Concular Düsseldorf, Germany

The “Behrensbau” was built in 1911/1912 by Peter Behrens as the headquarters of the Mannesmannröhren-Werke in an atypical multifunctional and expandable design for the time. This also includes the “Mannesmann Tower” built in 1956 – also known as the “Vodafone Tower” after the takeover in 2000. The building, which has been a listed building since 1982, was used for the “75 Years of NRW” exhibition until the end of August 2022.

This will be followed by a complete gutting and refurbishment for a new use of the time-honoured premises. As part of the collaboration between BLB NRW and Concular, there is the opportunity to give valuable materials from the former Vodafone headquarters on Mannesmannufer (Behrensbau, Väthbau) a new life in your project.

This includes products from the Lindner Group: system partition walls

in various designs and glass doors were used there and are now ready for a new purpose in another building. Together with Concular, these high-quality and unique materials were recorded during a reuse assessment.

Cooperation Partner

Concular GmbH
Stuttgart, Deutschland

Services

glass partition walls







Trivago Hauptquartier Düsseldorf, Germany

In the Media Harbour of Düsseldorf, the headquarters of the hotel search portal Trivago was created: Consisting of a base building and a tower, the building, with its organic architecture, is a visual highlight.

Covering 54,000 m², the sustainable building concept of the campus offers around 2,000 employees high-quality work and relaxation spaces. Lindner played a significant role in the interior fit-out of the base building, installing individually adapted metal heated/chilled ceilings as well as metal ceilings and carrying out drywall construction

work. Due to the demanding building geometry, almost every one of the metal ceiling panels, spread over approximately 21,500 m², is unique. Planning was efficiently automated using special CAD software. The ceilings combine aesthetics with functional performance in acoustics and energy-efficient temperature regulation, contributing to the building's LEED Gold certification.

Architect

slapa oberholz pszczulny architekten,
40474 Düsseldorf, Deutschland

Client

IMMOFINANZ Deutschland GmbH,
Köln, Deutschland

Services

- certification systems
- metal heated/chilled ceilings
- F0 metal ceilings
- door and gate systems
- plasterboard wall systems
- plasterboard ceiling systems

Lindner Group | Fit-Out North-Northwest
Bahnhofstrasse 29 | 94424 Arnstorf | Germany
www.Lindner-Group.com

Title: Covestro Leverkusen, Germany