

The image shows a large, open-plan interior space, likely a modern office or public building. The ceiling is the primary focus, featuring a grid of rectangular panels with a fine, perforated metal texture. These panels are supported by a network of dark metal beams. Below the ceiling, several thick, light-colored concrete pillars are spaced out, supporting the structure. The floor is a light, neutral color. In the background, large windows allow natural light to enter the space. The overall aesthetic is clean, industrial, and minimalist.

leuchten.fabrik

A Company of the Lindner Group

Focus on
function and design

Luminaires

Luminaire

Focus on function and design

The Lindner Group develops sophisticated Lighting Solutions for projects of all sizes with sound craftsmanship and architectural flair.

In the modern production facilities in Mettenbach and Arnstorf, high-quality luminaire ranges are designed and manufactured for all working environments: from freely configurable Light Channels, Integrated Luminaire for Metal Ceilings, Large-Surface Ceiling Elements, Project-Related Special Luminaire to Clean Room Lighting.

With minimal interfaces to the respective ceiling system, the best possible project elaboration and around 30 years of experience, we are the ideal partner to fulfil your lighting wishes.



...schaft aus elf Spielern“

SEPP HERBERGER
ZUSCHAUER

DEUTSCHE NATIONALMANNSCHAFT

Seit 1908 ist die deutsche Fußballnationalmannschaft (DFB) ein Teil der Fußballgeschichte des Landes. In der DFB ist der Fußballverband mitverantwortlich für die Entwicklung der deutschen Fußballnationalmannschaft. Seit 1954 sind die Spieler der Nationalmannschaft Teil der DFB-Mitgliedschaft.

THE GERMAN NATIONAL TEAM

Germany's first World Cup triumph in 1954 goes down in football history as the Miracle of Bern. The DFB team has been to every World Cup since then and built a reputation as a successful tournament side. After further wins in 1974 and 1990, Germany also won World's biggest prize for a fourth time in 2014.





Sandler AG, Schwarzenbach, Germany



Office building IMA Group, Castel San Pietro Terme, Italy

Integrated Luminaires in Metal Ceilings

Best conditions

The Lighting and Ceiling Systems are perfectly integrated with our Luminaires in Metal Ceilings. We can offer lighting solutions that are perfectly adjusted to the room concept, the lighting requirement and the Ceiling System.

- simple installation on site
- no colour deviation to the Metal Ceiling Systems
- suitable for general areas and offices





System Luminaires for Metal Ceilings

Perfect coordination

Ceiling and Lights are two different trades, which are perfectly combined with our System Luminaires for Metal Ceilings. We can provide the suitable Lighting Solution for your system ceiling.

- perfectly synchronised
- project-related production
- high technical and visual quality



Office building Lindner Welsy, Heverlee, Belgium

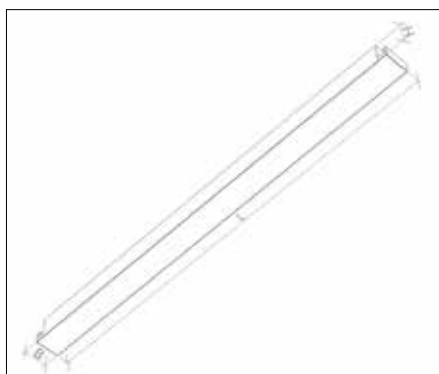


Expansion headquarters Pompadour, Bolzano, Italy
© www.meraner-hauser.com

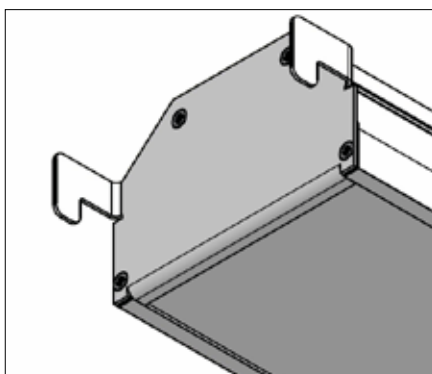


Salzuffer Lanolinfabrik, Berlin, Germany

Overview of possible installation systems for Metal Ceilings



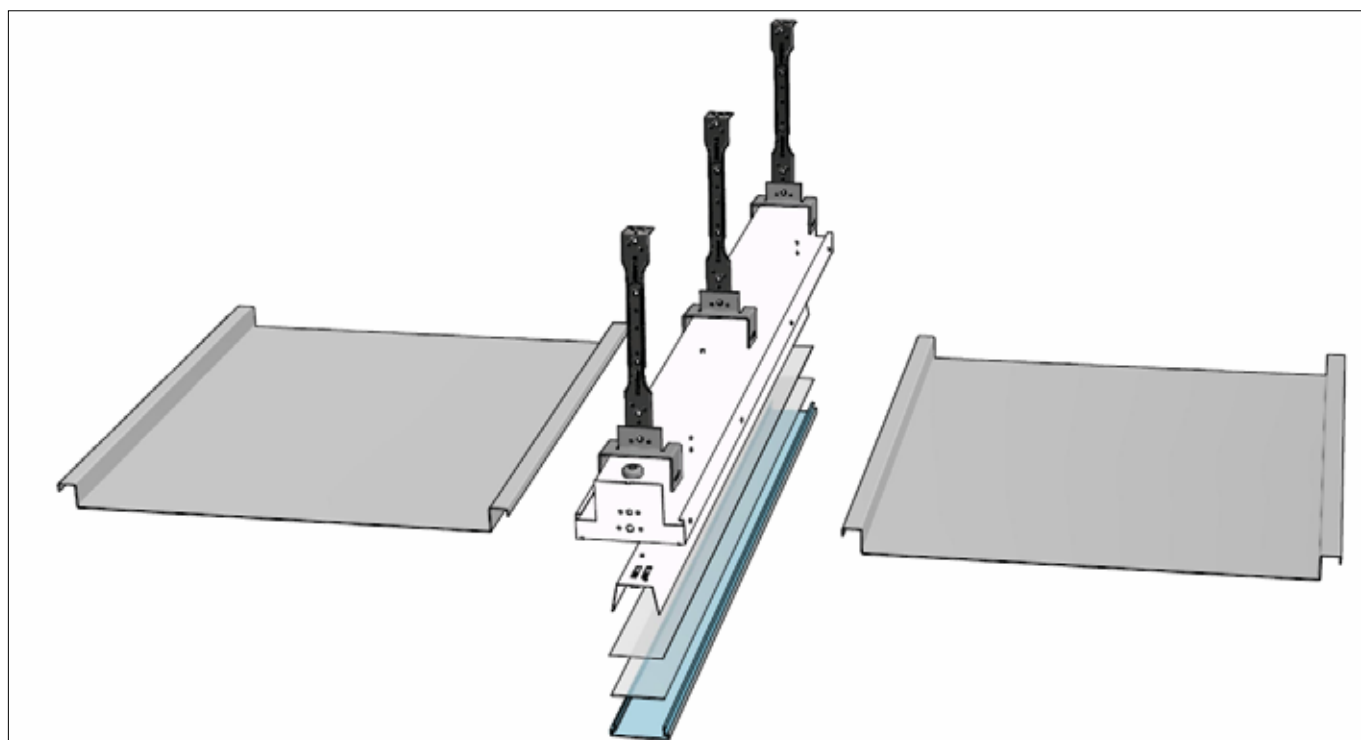
Hook-On Luminaires for Corridor Ceilings



Hook-On Luminaires for Post Cap Ceilings



Hook-On Luminaires for Corridor Ceilings



Post Cap Luminaires





Luminaires for Metal Fireproof Ceilings

Flexible and reliable

Compliance with fire protection guidelines is very important in the modern construction industry and can save lives in the event of emergency. For this reason, we can offer you a wide range of especially developed Flat Luminaires and Integrated Lighting Systems for Metal Fireproof Ceilings. Both sections, lighting and ceiling, go hand in hand, which enables you to work on your project without any problems.

- fireproof F 30/F 90
- no additional protective casing necessary
- flat design
- reduced interfaces between ceiling and lighting



Visualisation
© Lindner Group







Mieterausbau Expertum, Hamburg, Germany



Donauquartier, Passau, Germany

Light Channels

Rediscovering classics

Light Channels are a classic lighting element. Either as high-performance functional lighting or for the creation of architecturally sophisticated strip lighting, our luminaires can be easily adapted to your requirements.

- project-related production
- high-quality lighting technology
- simple installation



SEIT DEM
25. OKTOBER 2015
GEÖFFNET

UNSER
SOMMER.



Suspended Luminaires

Timeless lighting solution

If you are looking for a suspended light solution, we can provide the suitable lighting system. Either for functional, general lighting, high-quality decorative lighting or computer workstations with the highest glare control requirements, you'll be sure to find what you are looking for here.

- project-related production
- flexible application
- high-quality technology and design



College of Social Sciences, Kaunas, Litauen
Architect: Diled

Floor Luminares

Flexibility

Our Floor Lighting is sure to impress with its modern lighting technology, visually-pleasing design and simple installation. By being able to place them where you want, you can make sure there is light, wherever it is needed.

- modern lighting technology
- flexible positioning
- quick and easy set-up



Lindner Group, Arnstorf, Germany







Raumedic, Helmbrechts, Germany

Healthcare-/Laboratory-/ Hospital Luminaires

For the strictest of requirements

Clean rooms are also extremely demanding in terms of the required light quality, lighting level and the seals of the lights against contaminants. Thanks to our years of experience in the lighting sector, we have the right know-how to fulfil these requirements.

- manufactured to the highest quality standards
- many years of experience in healthcare lighting
- perfect coordination with the Ceiling System

Custom Luminaires

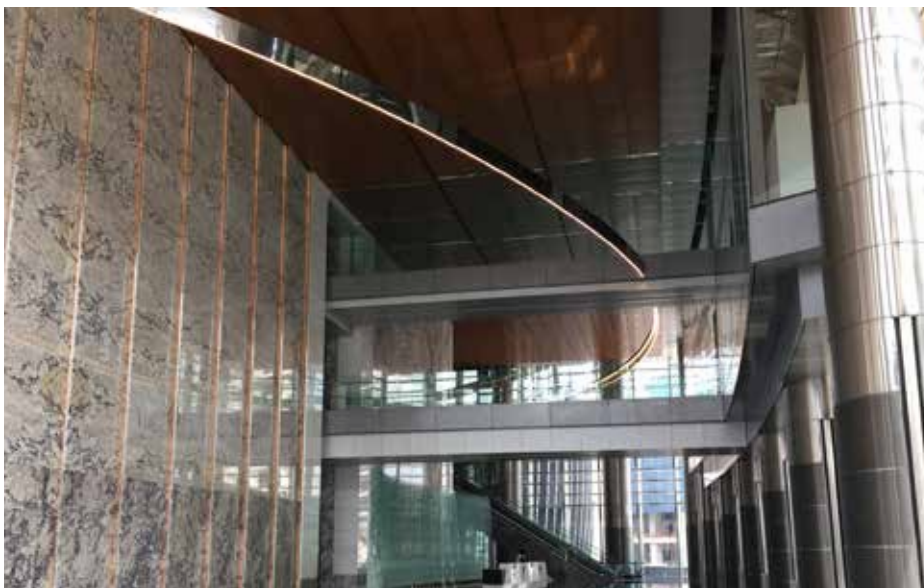
Individual solutions

Alongside our standard product range we also offer various, special custom-made products. From Industrial Lighting and Light Ceilings to Surface Lighting, there is no technical challenge we won't try.

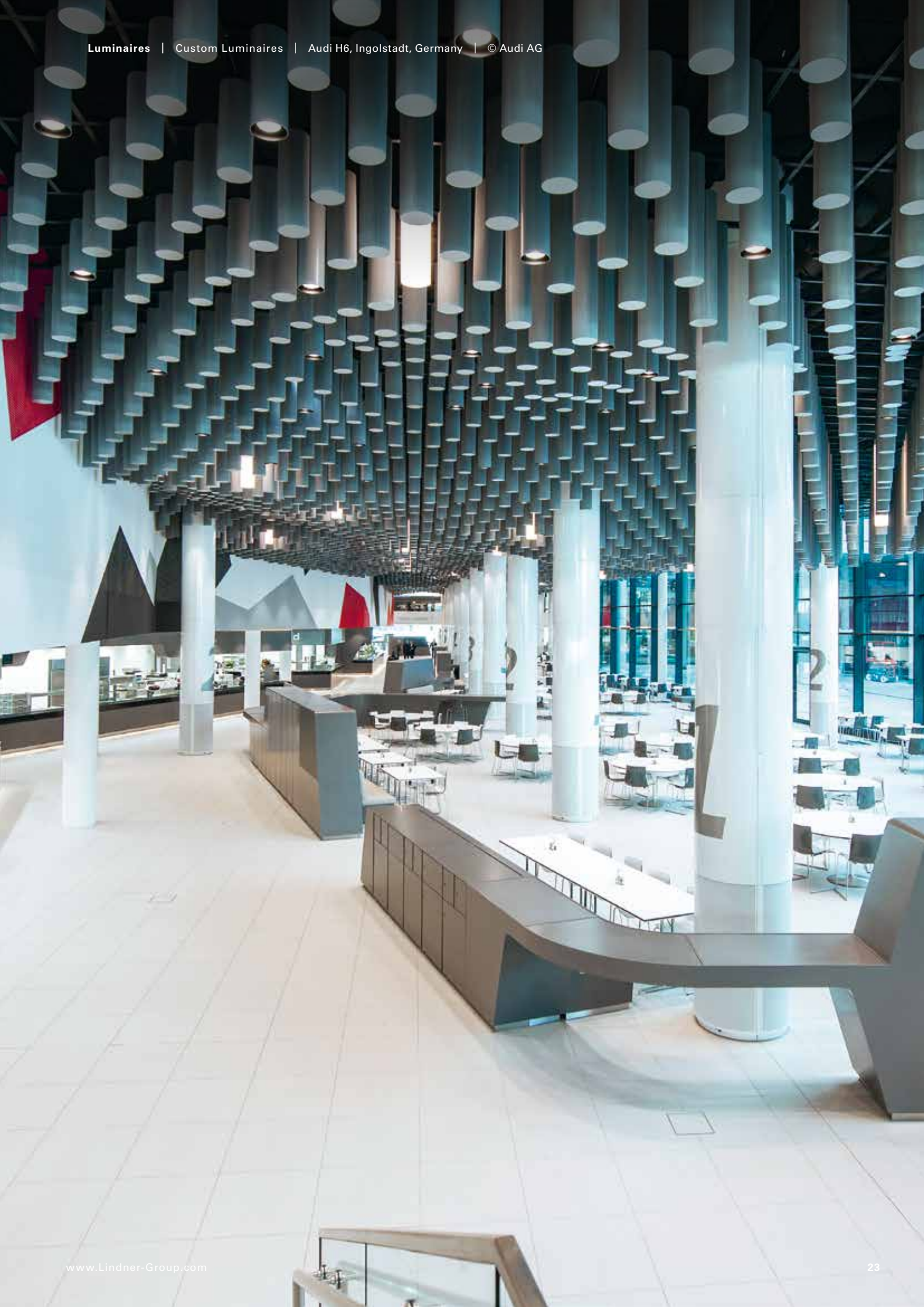
- manufactured to customer needs
- perfectly adapted to room sizes
- high technical and architectural quality



Estrel EAMC Berlin,
Germany



Signature Tower, Kuala Lumpur, Malaysia





Rethinking Space

Add.Vantage

Over time, the Lindner Group has developed into a technically sound, solution-oriented and reliable partner with an economically solid basis. Our comprehensive product and service portfolio for building envelopes, interior fit-out and insulation in almost all fields of application are second to none.

True to our motto “Rethinking Spaces” we develop perfectly customised and yet versatile solutions and concepts for your building project.

As a 100% family-owned company, we attach particular importance to our environment. With innovative concepts such as Cradle to Cradle Certified®, low-emission products and well thought-out room concepts, we create Add.Vantage for people and their environment. As a service provider and employer we place people at the centre of our activities. Our customers notice this too: We enjoy our work, have conviction in what we do and are proud of what we can achieve.

Our Luminaire Factory

Founded in 1993 as IWS Lichttechnik in Mettenbach near Landshut, the Leuchtenfabrik has been part of Lindner SE since 2014 and distributes, plans, develops and manufactures innovative lighting systems, both as system luminaires and for individual project solutions. Our business unit combines many years of expertise in the field of luminaires with the Lindner Group’s range of experience in all facets of the construction industry, ensuring that we have the right lighting for every project.



Lindner Group Headquarters
Arnstorf, Germany

A global player... with our roots in Arnstorf



Luminaires and Lighting Solutions – References worldwide

- Deutsche Bank, Frankfurt, Germany
- Sandler AG, Schwarzenbach, Germany
- University of Hamburg – WiSo Library, Germany
- BMW FIZ, Munich, Germany
- Kynaststrasse Berlin, Germany
- German Football Museum, Dortmund, Germany
- EAS, Langenselbold, Germany
- German Consulate, Bombay, India
- Audi H6, Ingolstadt, Germany
- BayWa, Munich, Germany
- Nishith Desai Associates (NDA), India
- Expansion headquarters Pompadour, Bolzano, Italy

Globally we have realised countless projects for our customers, meet challenges and grow with them. A worldwide network of reliable partners and established subsidiaries supports us doing our work. In the following pages, you'll find an overview of our extensive range of Lighting Solutions.

Contact us at our headquarters in Arnstorf or visit www.Lindner-Group.com to find your local point of contact.

Lindner SE | Leuchtenfabrik

Bahnhofstrasse 29
94424 Arnstorf
Deutschland
info@Leuchtenfabrik.com



Cover: Salzufer Lanolinfabrik, Berlin, Germany

Lindner Group | Leuchtenfabrik
Bahnhofstrasse 29 | 94424 Arnstorf
info@Leuchtenfabrik.com | www.Leuchtenfabrik.com