

Nexus Place

London, United Kingdom





Project Description

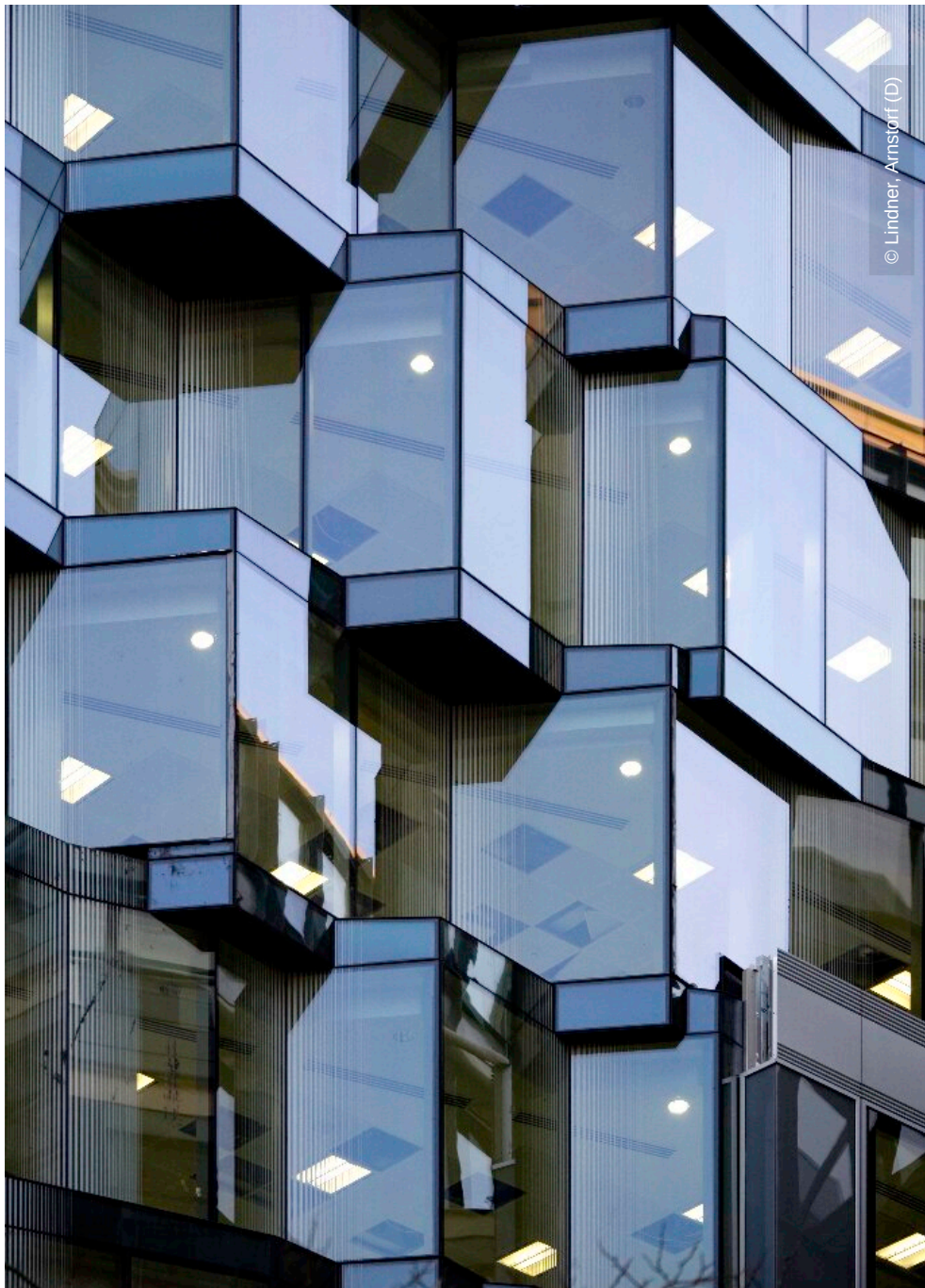
Main issue of this project was redeveloping an existing building by modernizing the facade from ground floor till the eighth floor. Furthermore the building was extended by four additional floors. The high complex 3D-construction of the facade is a bespoke solution. To achieve the comb-shaped character, a chrySTALLine structure has been applied to the surface of the facade.

General

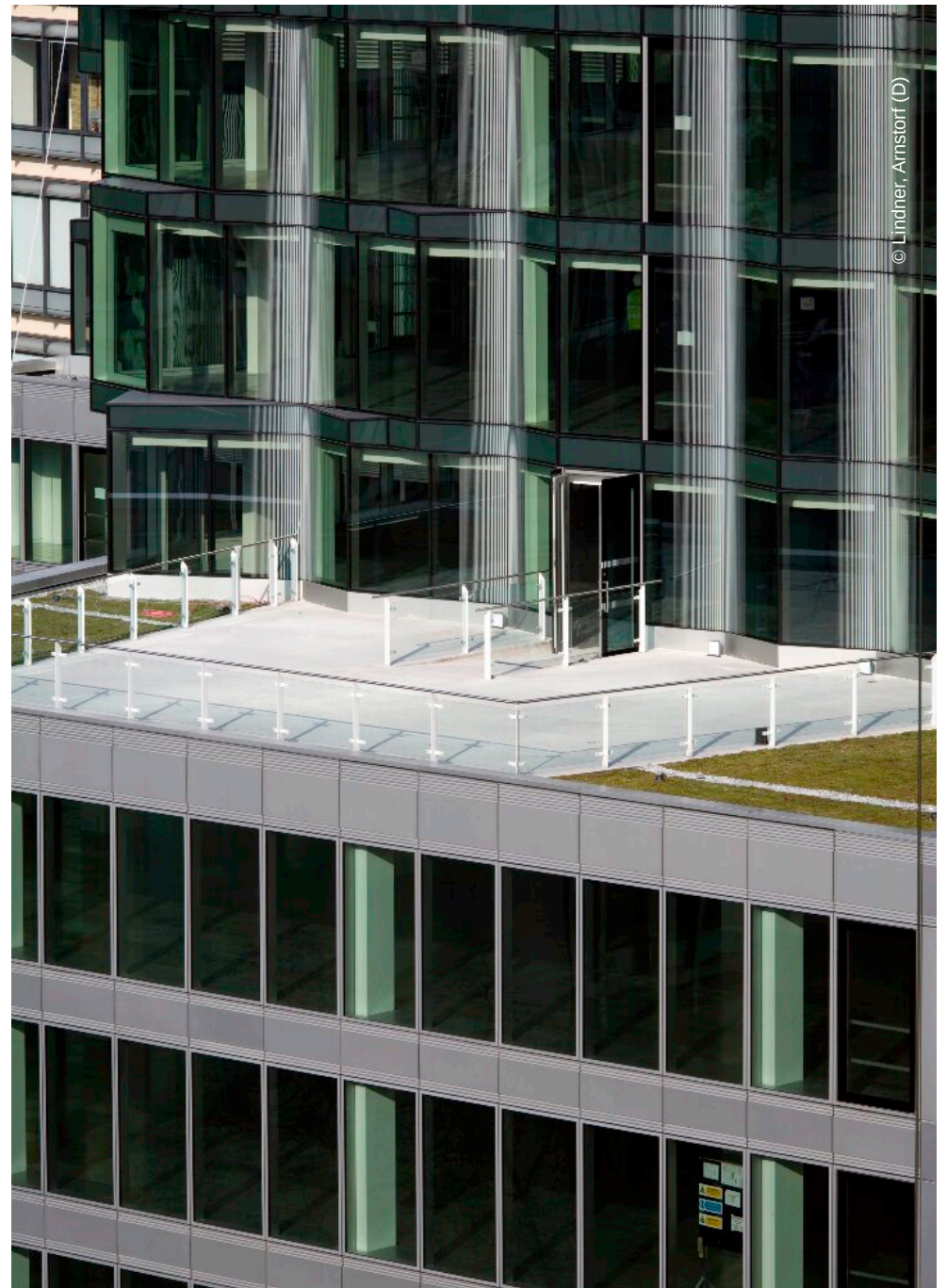
Building Type	Office buildings
Company Division	Lindner Prater Ltd (DMCC BRANCH)
Completion	2007 - 2009
Client	ISG InteriorExterior plc
Architect	Sturgis Associates

Completed Works

- **Facades**



© Lindner, Arnstorf (D)



© Lindner, Arnstorf (D)



© Lindner, Arnstorf (D)



© Lindner, Arnstorf (D)