

# Exhibition - Topography of Terror

Berlin, Germany

 **Lindner**







# Project Description

The exhibition of "Topography of Terror" focuses on the historic incidents of the National Socialism. The exhibition opened in May 2010. Lindner fitted metal ceilings and partition walls to this project.

## General

<b>Building Type</b>	Museums
<b>Company Division</b>	Lindner SE   Partitions, Lindner SE   Ceilings
<b>Completion</b>	2009 - 2010
<b>Client</b>	Bundesamt für Bauwesen und Raumordnung
<b>Architect</b>	Heinle, Wischer und Partner

## Completed Works

- **Ceilings**  
Metal Ceilings

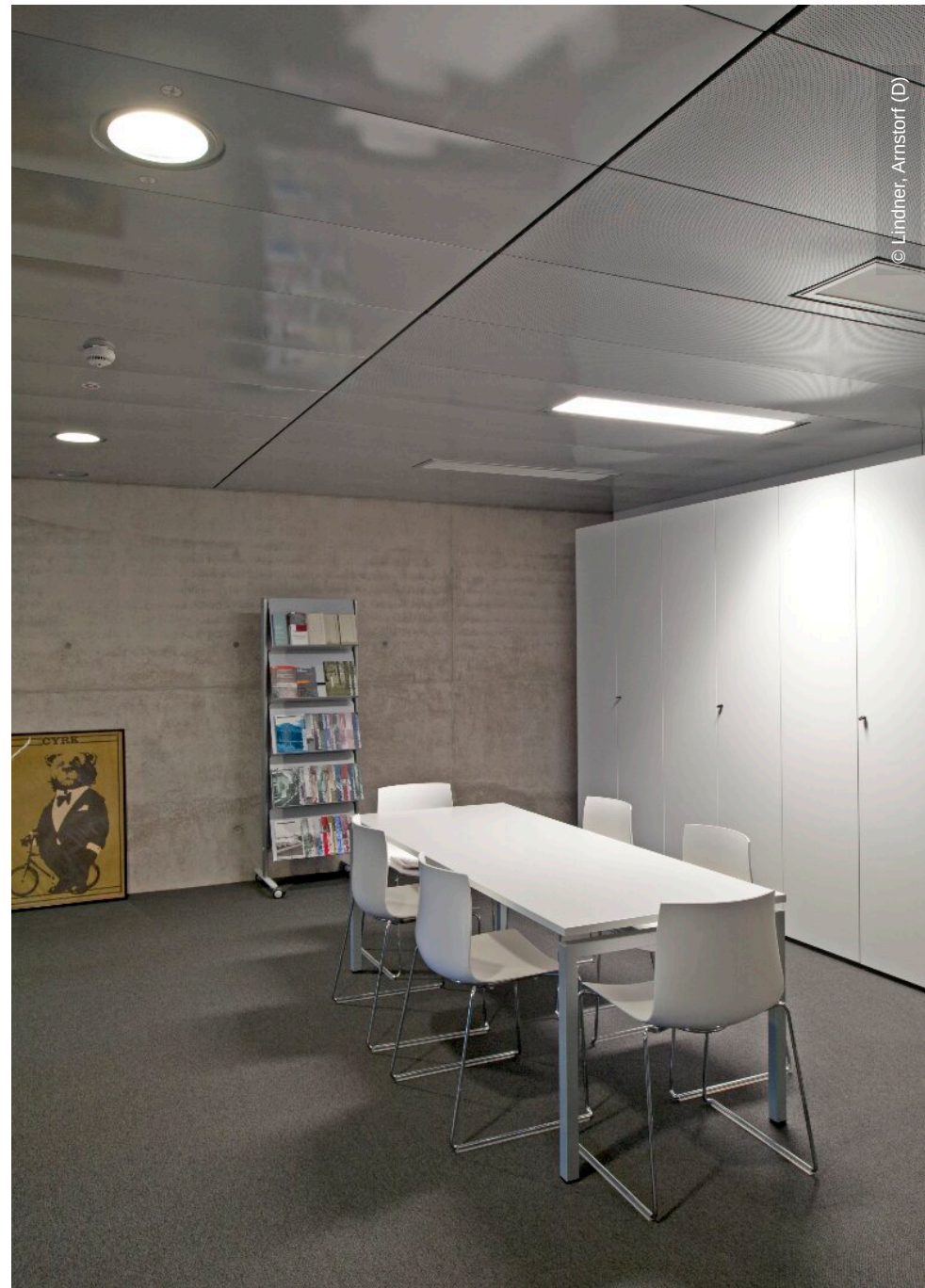
- **Partitions**

Partition Systems Glass

Doors for Partition Systems



© Lindner, Arnstorf (D)



© Lindner, Arnstorf (D)



