

# Vocational School Eichstätt

Eichstätt, Germany





# Project Description

The vocational school in Eichstätt was extended with a new 3 storey high building including underground parking, cafeteria and recreation hall. Lindner was responsible for the interior fit-out of the new building.

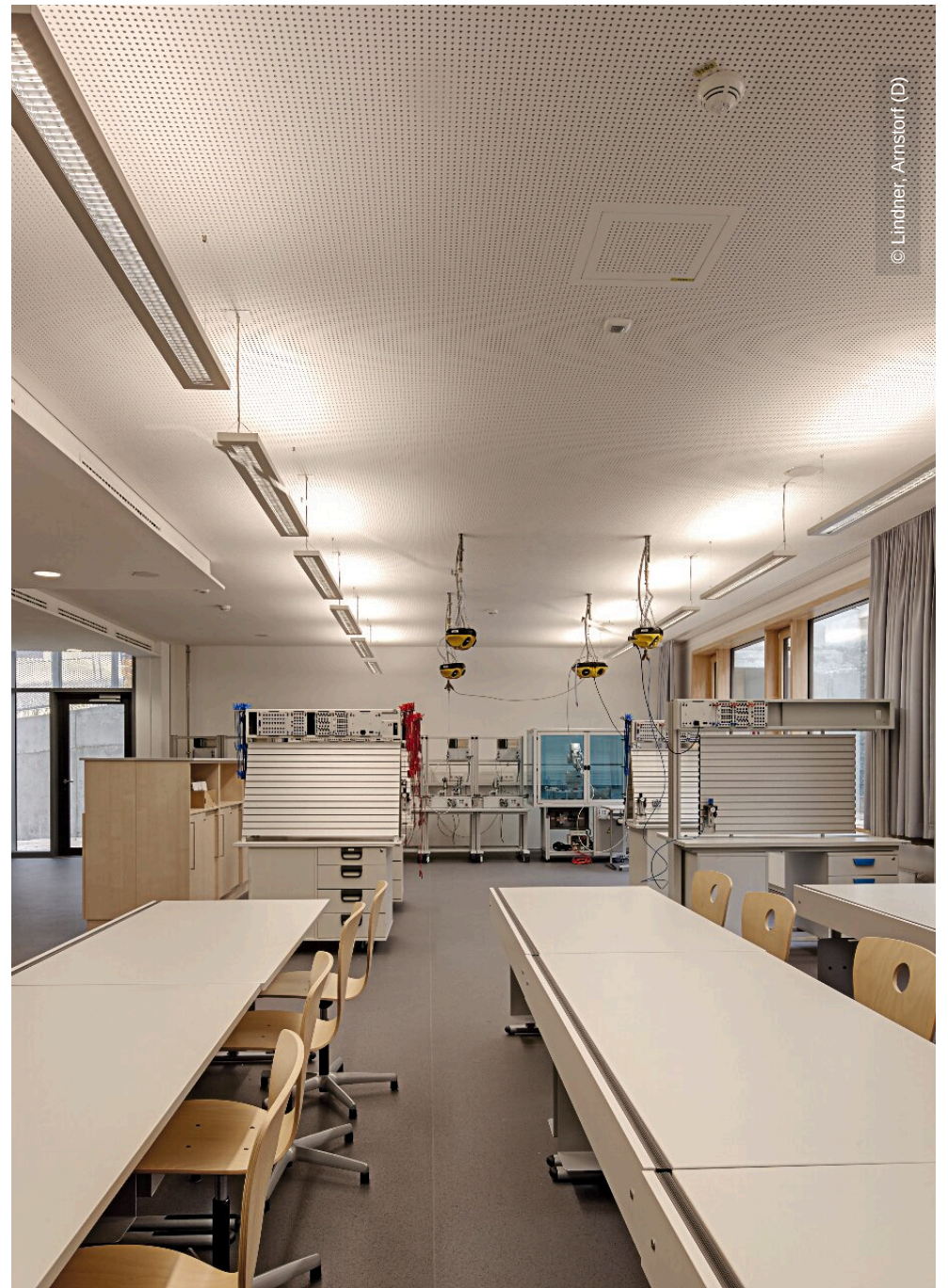
## General

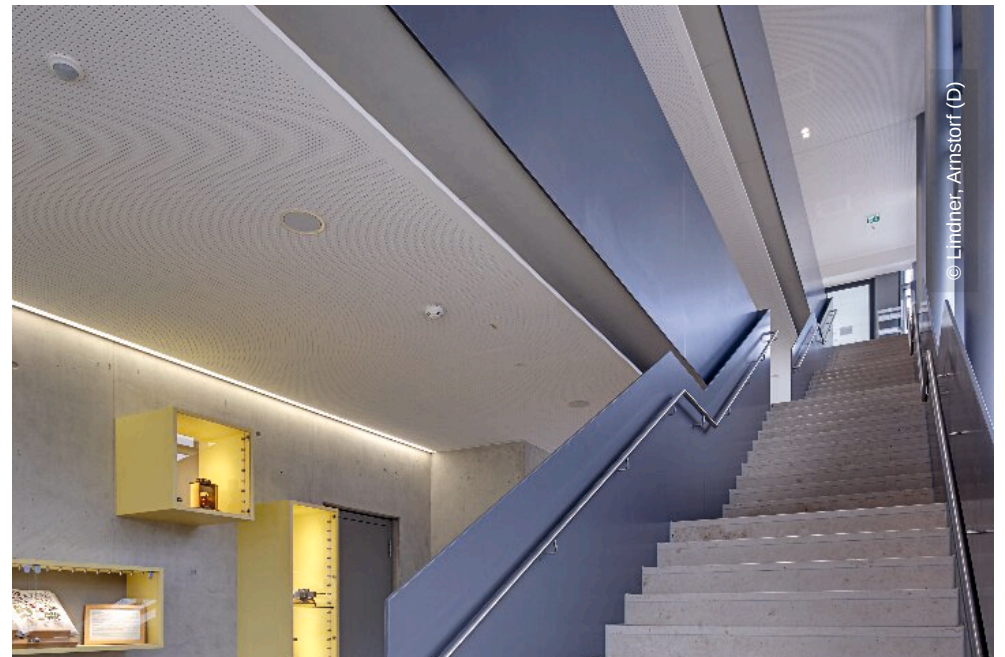
|                         |                                 |
|-------------------------|---------------------------------|
| <b>Building Type</b>    | Office buildings                |
| <b>Company Division</b> | Lindner SE   Ausbau Süd.Südwest |
| <b>Completion</b>       | 2012                            |
| <b>Client</b>           | Landratsamt Eichstätt           |
| <b>Architect</b>        | Krug Grossmann Architekten      |

## Completed Works

- **Ceilings**  
Heated and Chilled Canopy Ceilings
- **Dry lining**  
Plasterboard ceiling systems  
Plasterboard partition systems









© Lindner, Arnstorf (D)