

Königstadt-Carree

Berlin, Germany





Project Description

The Königstadt-Carree is situated close to the center of Berlin-Friedrichshain. The complex comprises four buildings: the 21 storey high office tower, a 9 storey high connecting building, an atrium and a hotel building. Lindner was responsible for the top quality interior fit-out for large areas of the 80 metres high office tower. The different floors were designed individually for each tenant as part of the tenant fit-out.

General

Building Type	Office buildings
Company Division	Lindner SE Ausbau Mitte.Ost, Lindner SE Interior, Lindner SE Partitions, Lindner SE Floors
Completion	2017
Architect	bauart Architekten und Ingenieure
Client	bauart Group

Partition Systems Full Panel
Lindner Logic 100 Metal
Accessories - Lindner Plus

- **Ceilings**

Canopy Ceilings
Hook-On Ceilings

- **Doors**

Wooden doors
Sliding doors

- **Floor covering works**

Floor coating works
Screed works
Tiling works
Painting works
Plastering works
Stucco works
Carpentry
Dry construction works
Plasterboard ceiling systems
Plasterboard partition systems

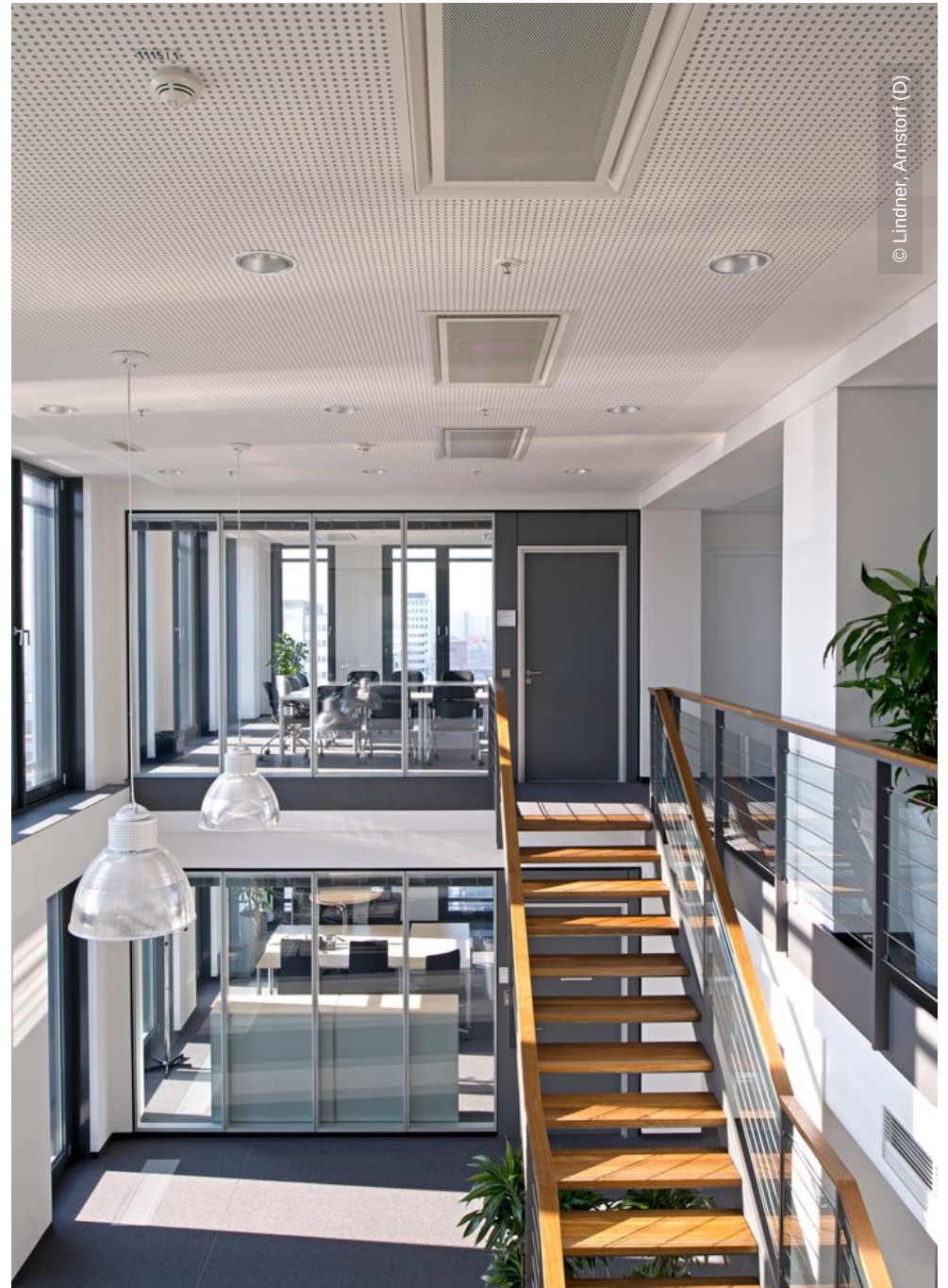
Completed Works

- **Floors**

Calcium sulphate panels
NORTEC
FLOOR and more®

- **Partitions**

Partition Systems Glass

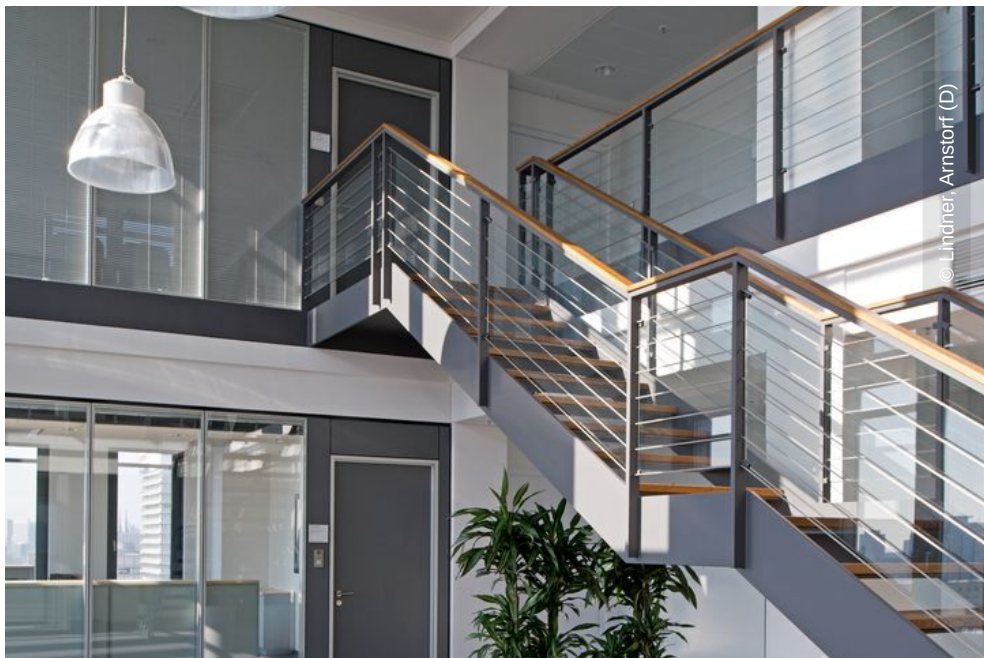




© Lindner, Arnstorf (D)



© Lindner, Arnstorf (D)



© Lindner, Arnstorf (D)



© Lindner, Arnstorf (D)



© Lindner, Arnstorf (D)



© Lindner, Arnstorf (D)



© Lindner, Arnstorf (D)

