

Nordic Yards

Warnemünde/Wismar, Germany





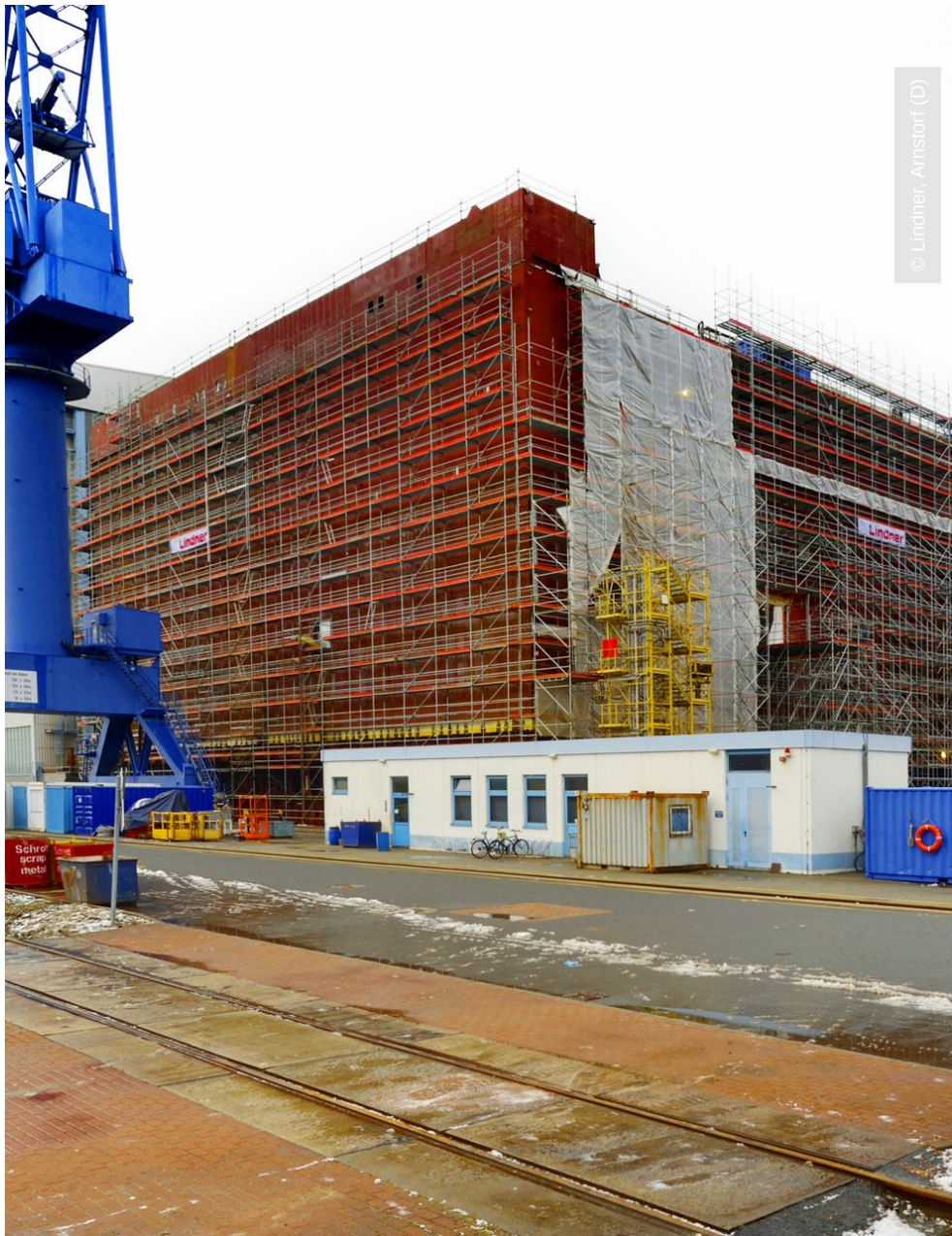
© Lindner, Arnstorf (D)

Project Description

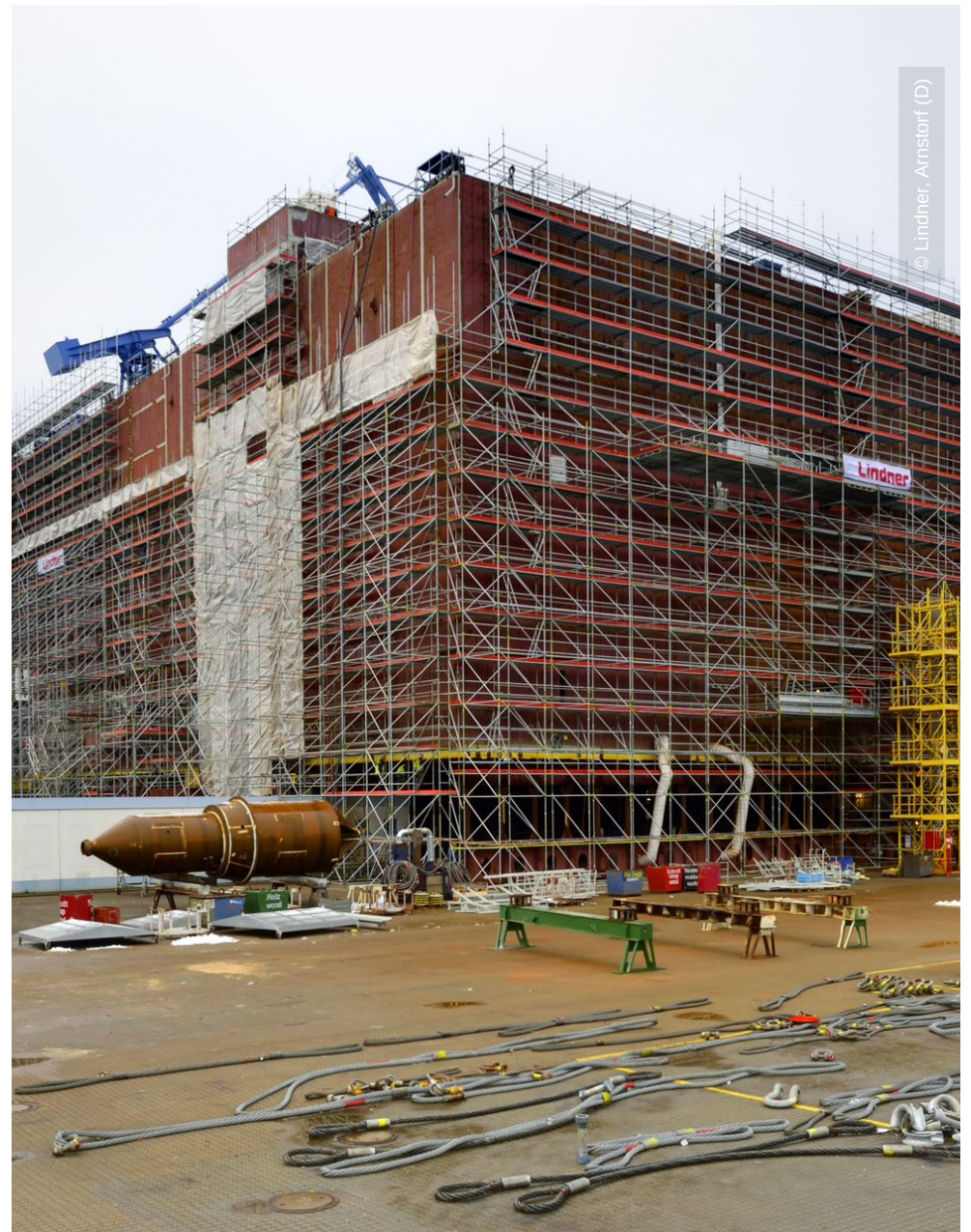
The offshore platform "SylWin alpha" is under construction at the Nordic Yards wharf for its later use in the windparks 70 kilometers western of Sylt. It is the largest platform with a height of 80 metres, a width of 56 metres and a length of 82 metres. It was built within a building period of only 6 months and a total of 450.000 m³ of birdcage scaffolding.

General

Building Type	Power Plants
Company Division	Lindner Gerüstbau GmbH
Completion	2012 - 2011
Client	Nordic Yards



© Lindner, Arnstorf (D)



© Lindner, Arnstorf (D)

