

# European Central Bank

Frankfurt, Germany





# Project Description

The European Central Bank ensures price stability and a balanced economic situation within the Euro zone. In 2014, the ECB moved its headquarters within Frankfurt from the Eurotowers to a partially new constructed building ensemble.

This ensemble consists of three elements, one of them being a former market hall that was built in the 1920's. The other two elements are polygonal towers that were built in for this project. With a height of 185 metres, the north tower surpasses its twin in the south by 20 metres. Both of these structures have a combined gross floor area of 110,000 sqm. The three elements are connected with a common entrance structure. In total, this new headquarters of the ECB offers enough space to house the workplaces of 2,300 employees.

Tiling works  
Painting works  
Plastering works  
Steel construction works

- **Floors**

Calcium sulphate panels  
FLOOR and more®  
NORTEC

- **Ceilings**

Heated and Chilled Post Cap Ceilings  
Heated and Chilled Plasterboard Ceilings  
Plafotherm® GK HEKDA®  
Metal Ceilings

- **Dry lining**

Plasterboard partition systems

- **Tenant fit-out**

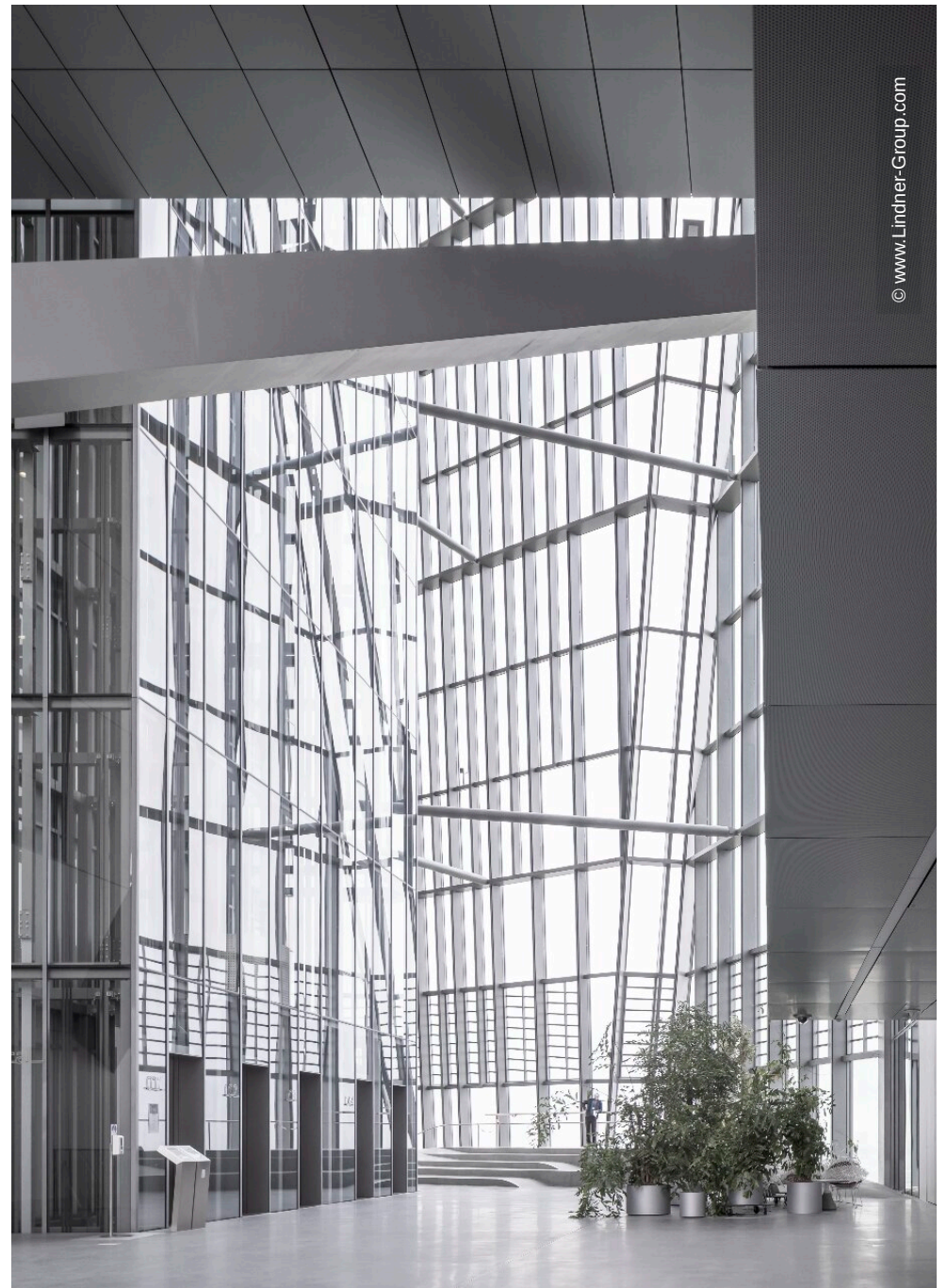
## General

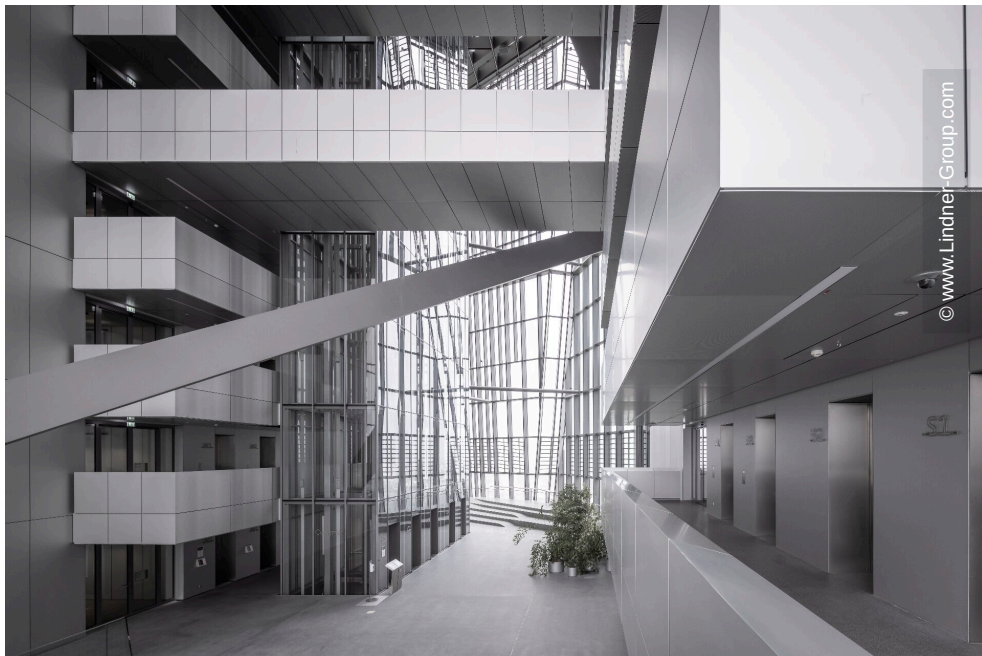
<b>Building Type</b>	Office buildings
<b>Completion</b>	2011 - 2015
<b>Client</b>	Europäische Zentralbank
<b>Architect</b>	Coop Himmelb(l)au

## Completed Works

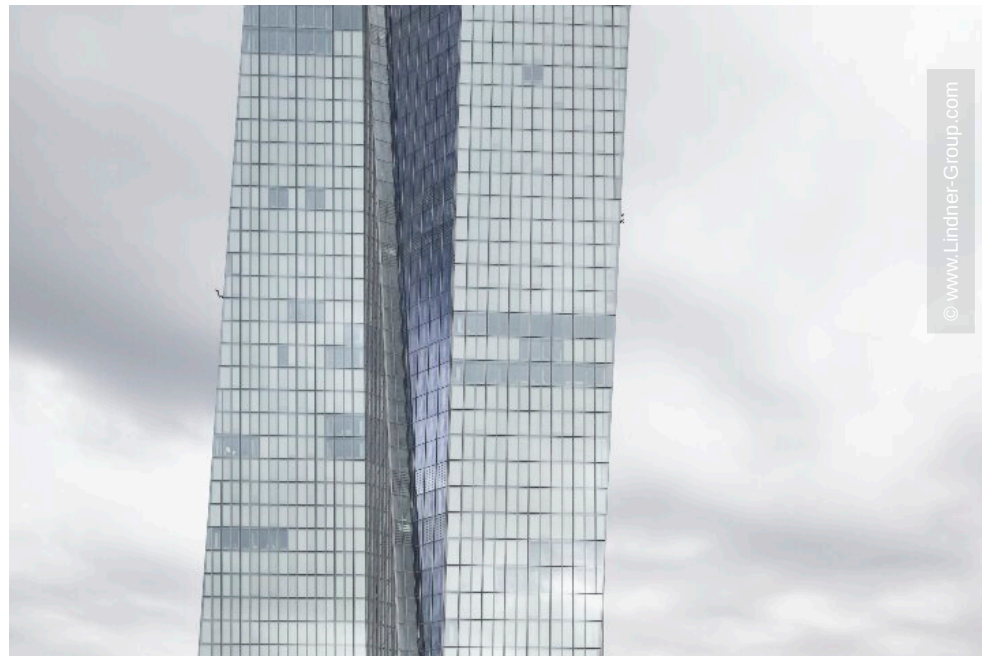
- **General contractor**

Insulation Engineering

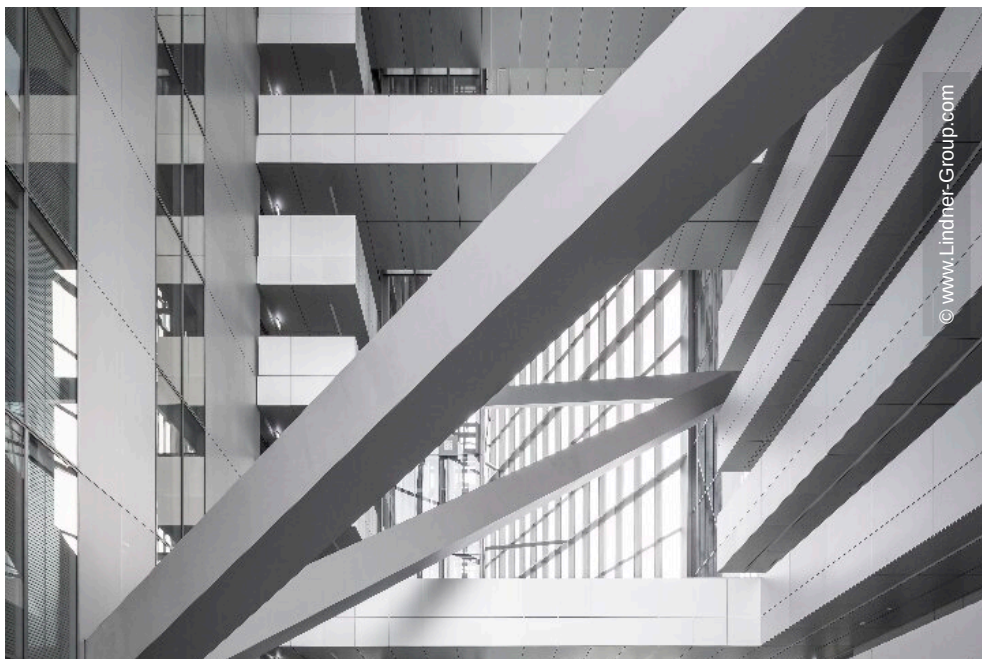




© www.Lindner-Group.com



© www.Lindner-Group.com



© www.Lindner-Group.com



© www.Lindner-Group.com

