

# New Construction of Deutsche Hypo

Hannover, Germany





© www.Lindner-Group.com

# Project Description

A striking new construction in the Old Town of Hannover composes the new central administration of Deutsche Hypo, the specialist subsidiary for real estate financing of Nord/LB. The six-storey building features a usable area of 11,000 sqm and a curved natural stone façade that blends in harmonically into the surrounding cityscape. The sustainable concept of the building aims for a DGNB Gold certification.

As a part of this project, Lindner executed extensive dry construction works in the office areas, corridors, meeting rooms as well as in the entrance hall and the cafeteria. Additionally, the large areas in the building have been fitted with CAVOPEX hollow floors that meet the various demands in the building with numerous surface coatings.

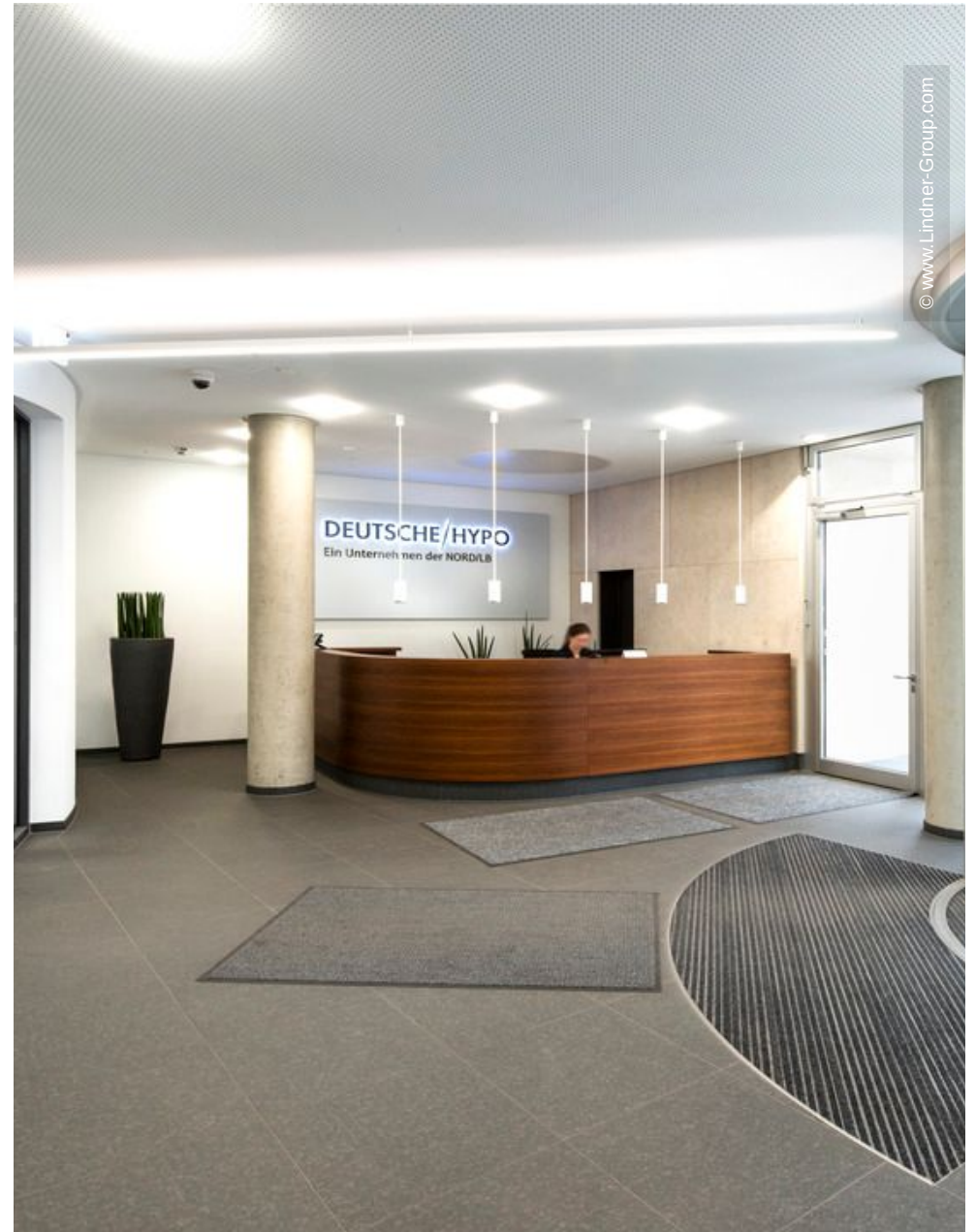
- **Floors**  
Nasshohlboden  
CAVOPEX

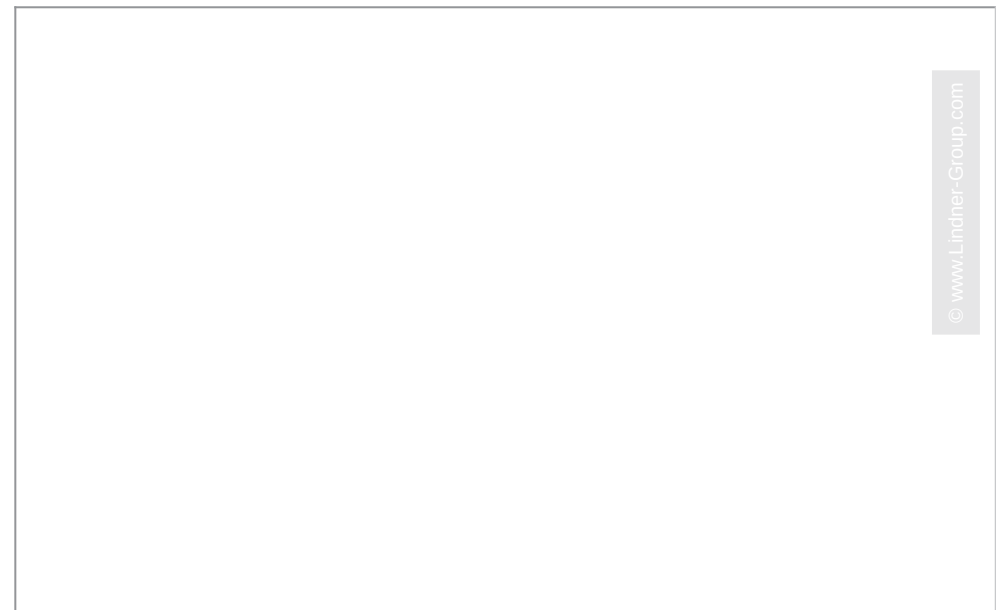
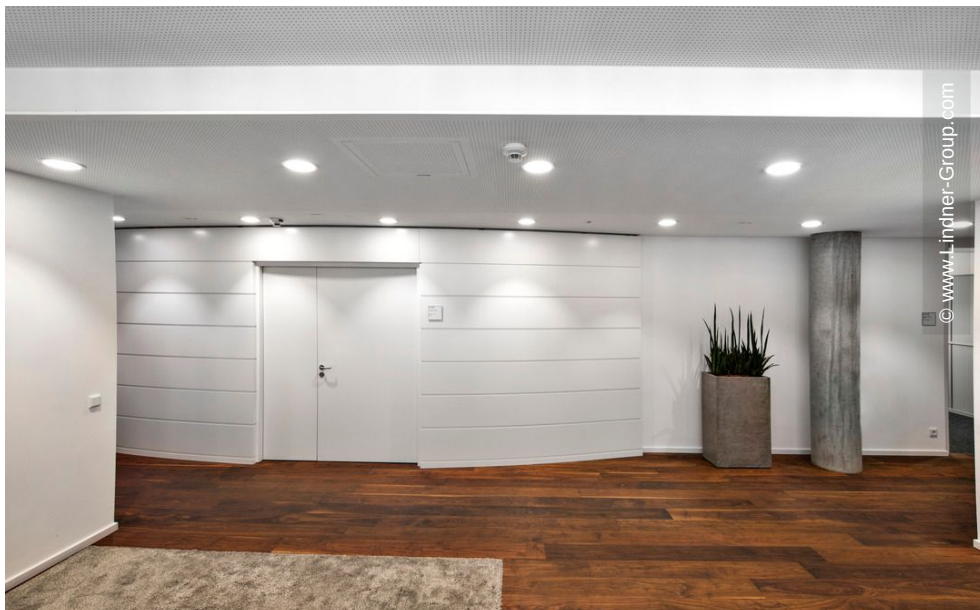
## General

<b>Building Type</b>	Office buildings
<b>Company Division</b>	Lindner SE   Fit-Out North.Northwest Germany, Lindner SE   Floors
<b>Completion</b>	2014 - 2015
<b>Client</b>	Deutsche Hypo
<b>Architect</b>	Kleihues+Kleihues Ges. von Architekten

## Completed Works

- **Dry lining**  
Plasterboard ceiling systems  
Plasterboard partition systems





© www.Lindner-Group.com

© www.Lindner-Group.com

© www.Lindner-Group.com