

# Hotel Art Rotana

Manama, Bahrain

 **Lindner**



## Project Description

The five-star hotel ART Rotana is located on Amwaj Island, an artificially created island north of Manama. It offers a total of 311 luxurious rooms which all provide a view of the sea.

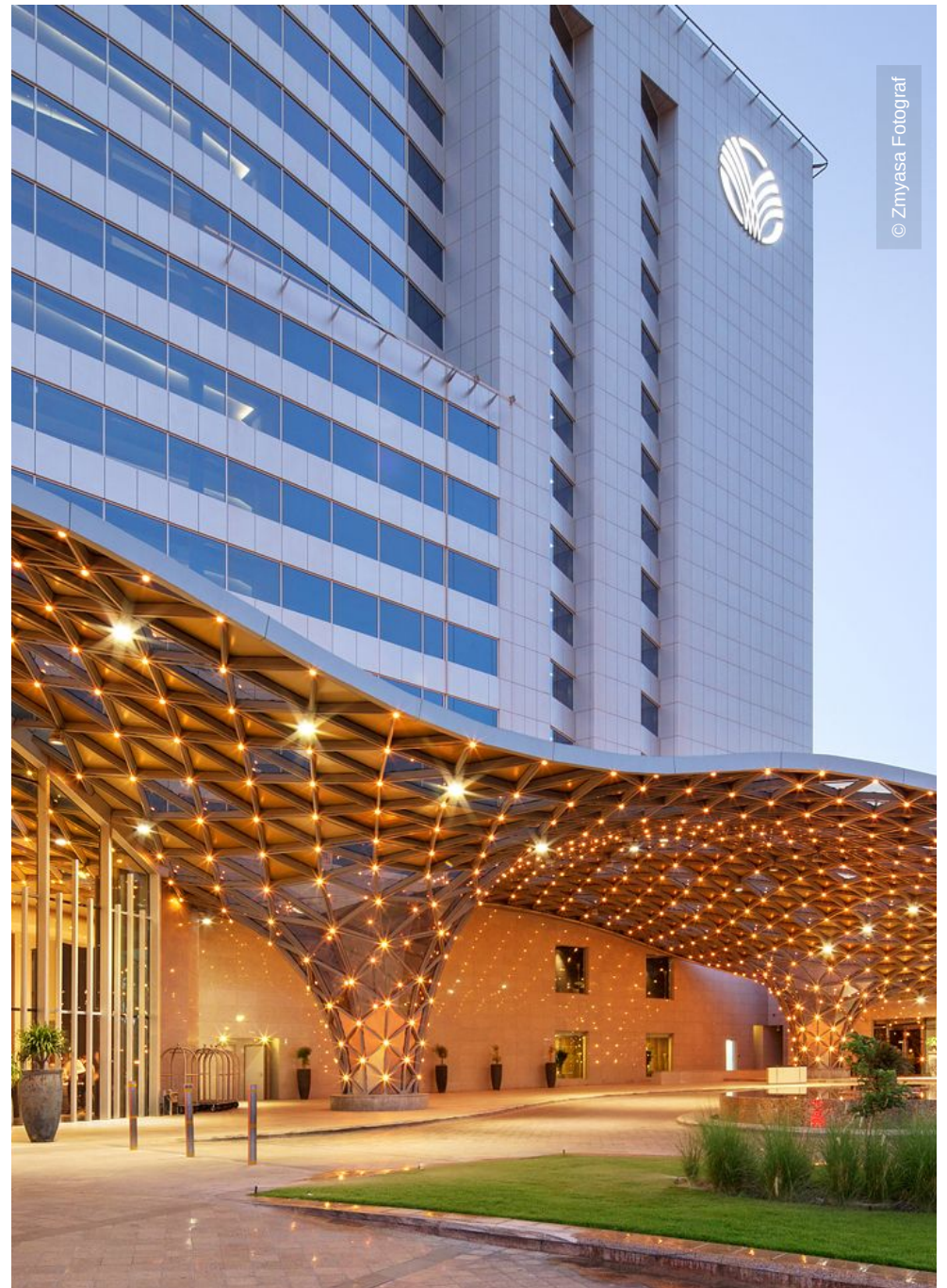
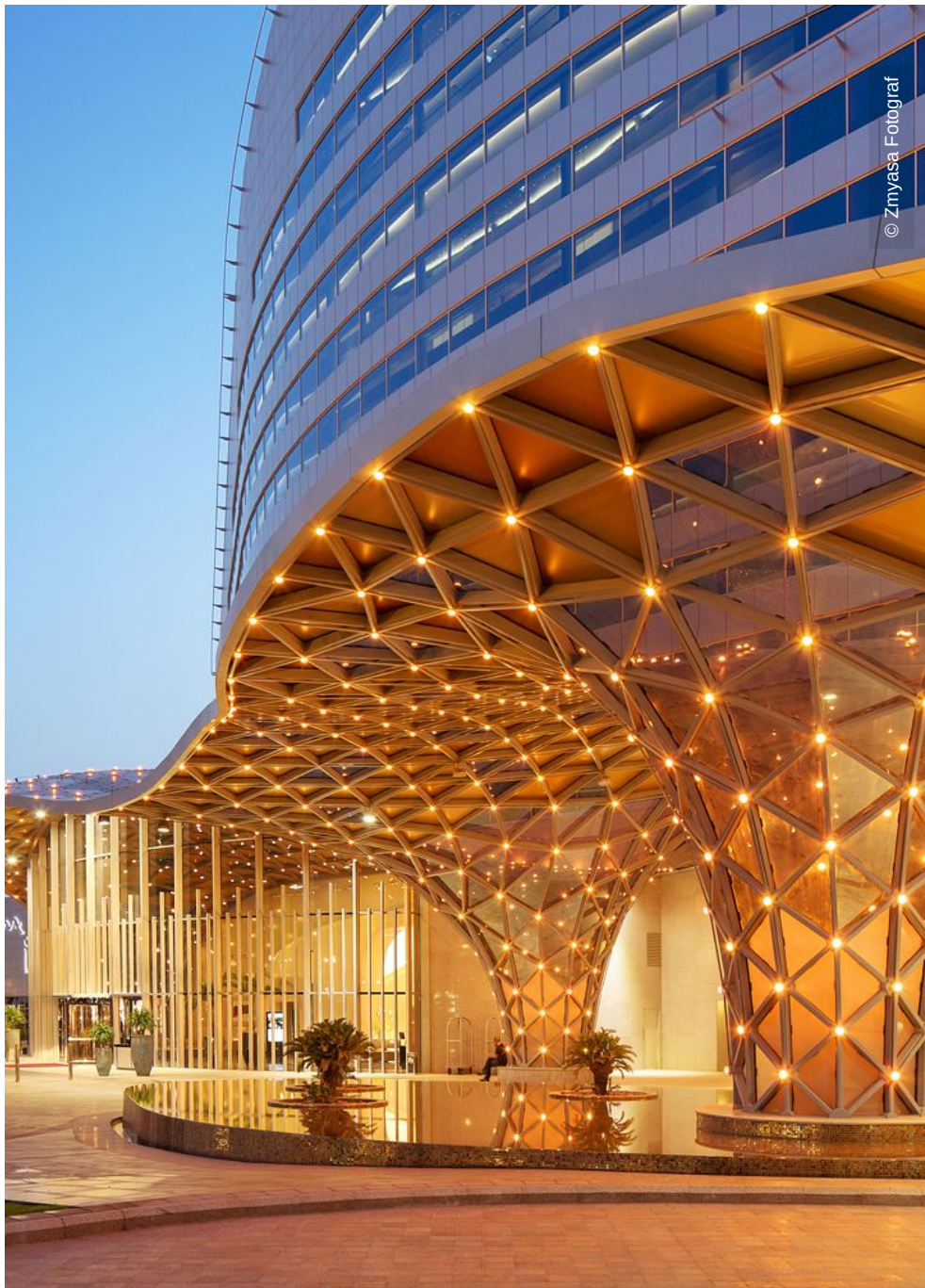
The hotel's guests arrive at an entrance structure that is formed three-dimensionally with steel. Lindner Steel & Glass was responsible for its construction. The structure consists of a single-layer steel frame built with rectangular hollow profiles connected with steel nodes. It is supported via three funnels, while the rest of the aluminium and glass construction was thermally separated in the entrance area. The separation between the 10 metres high undulating foyer was achieved with a post and mullion facade. It consists of insulated glass panels in the dimensions 1.8m x 2.6 m, which are carried by main posts and horizontal mullions. Additional mullions have been added to improve the appearance.

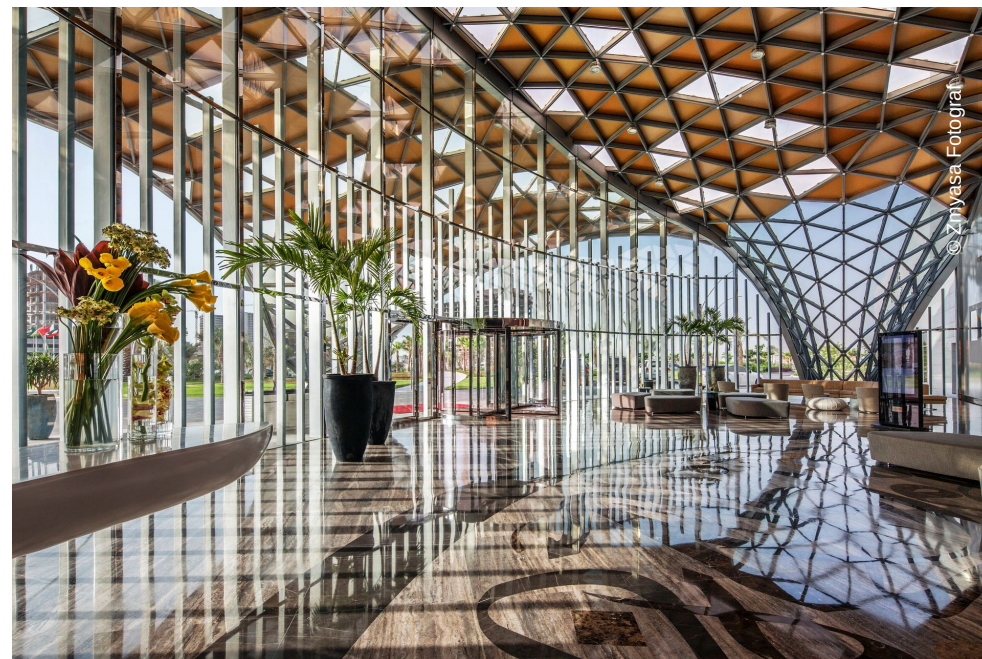
## Completed Works

- **Facades**

## General

<b>Building Type</b>	Hotels and Resorts
<b>Company Division</b>	Lindner Fassaden GmbH   Steel & Glass
<b>Completion</b>	2015
<b>Client</b>	Argon Properties Co. W.L.L.
<b>Architect</b>	Middle East Architects SPC







© Zmyasa Fotograf