

70 St Mary Axe

London, United Kingdom





Project Description

60-70 St Mary Axe is an office building designed by London-based architectural firm Foggo Associates with retail space on the ground floor. It is located in the architecturally ultra-modern financial district of the City of London in close proximity to the iconic 30 St Mary Axe, also known as "The Gherkin," whose facade was realized by Lindner. Also, the new building is nicknamed: "The Can of Ham" in its semi-elliptical shape reminiscent of the packaging of English canned ham. The 360° view through the vaulted, all-glass façade offers a great view of the city of London. The BREEAM Excellent building offers 28,000 m² of office space, spread over 21 floors and designed to meet a wide variety of needs.

Lindner Interiors contributed to the construction with interior fit-out products. These include the suspended ceilings for the "A" category office rooms on the 3rd, 9th and 12th floors, and the luminous ceilings at the reception and in all elevator anterooms. The Lindner fire grid ceiling system LMD-B 100 with linear grid arrangement was installed on two floors, while on the third floor, light strip modules were chosen instead. These complete the appearance of the iconic building in an impressive way. If required, LMD-B 100 partitions can be attached to the Lindner ceiling system so that the office space can be individually divided. With its radiant fire grids and trapezoidal ceiling tiles, the system is perfect for the sweeping silhouette of the 60-70 St Mary Axe building.

Completed Works

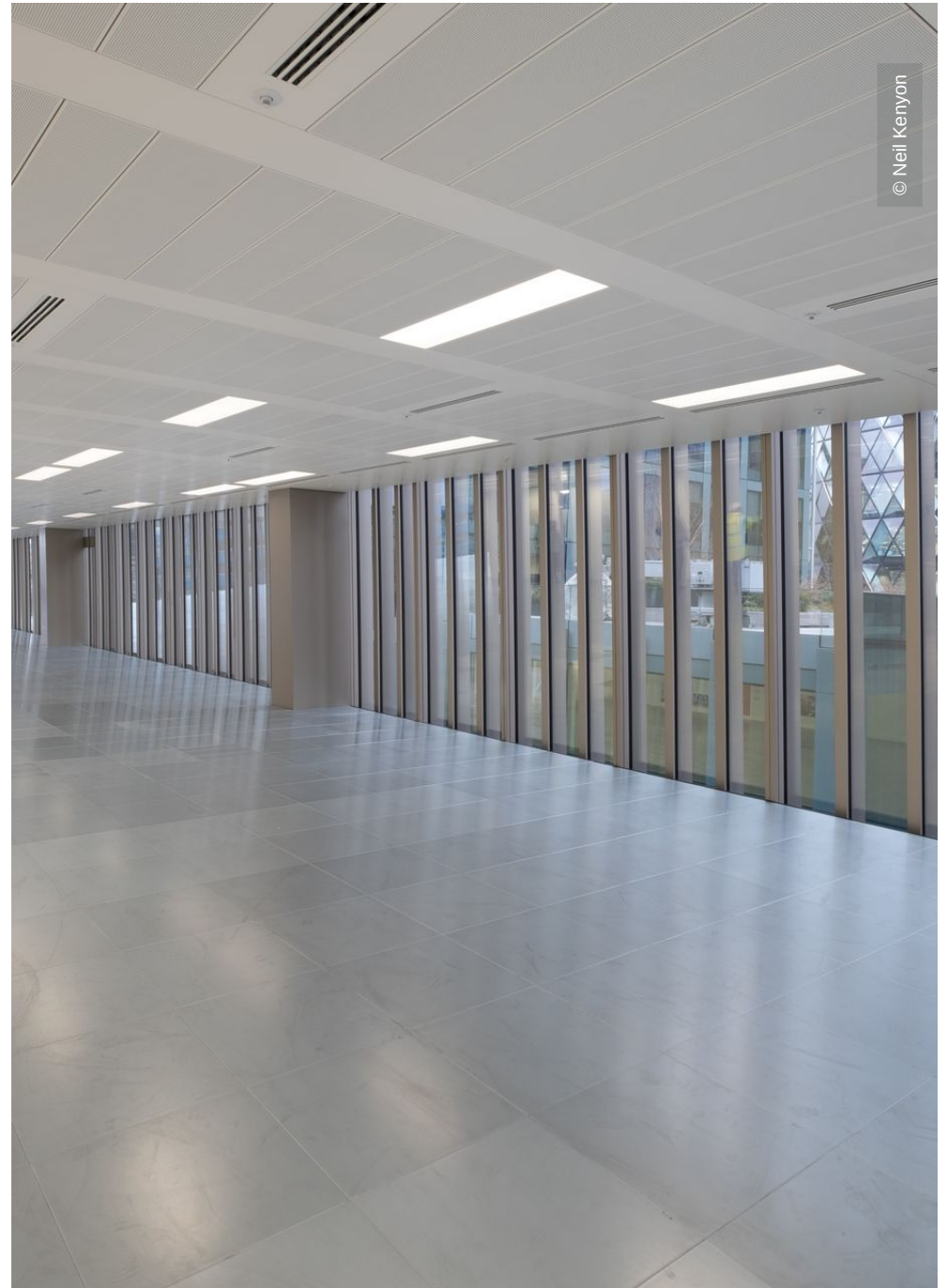
- **Ceilings**
Metal Ceilings aurum

General

| | |
|-------------------------|-----------------------|
| Building Type | Office buildings |
| Company Division | Lindner Interiors Ltd |
| Completion | 2018 |

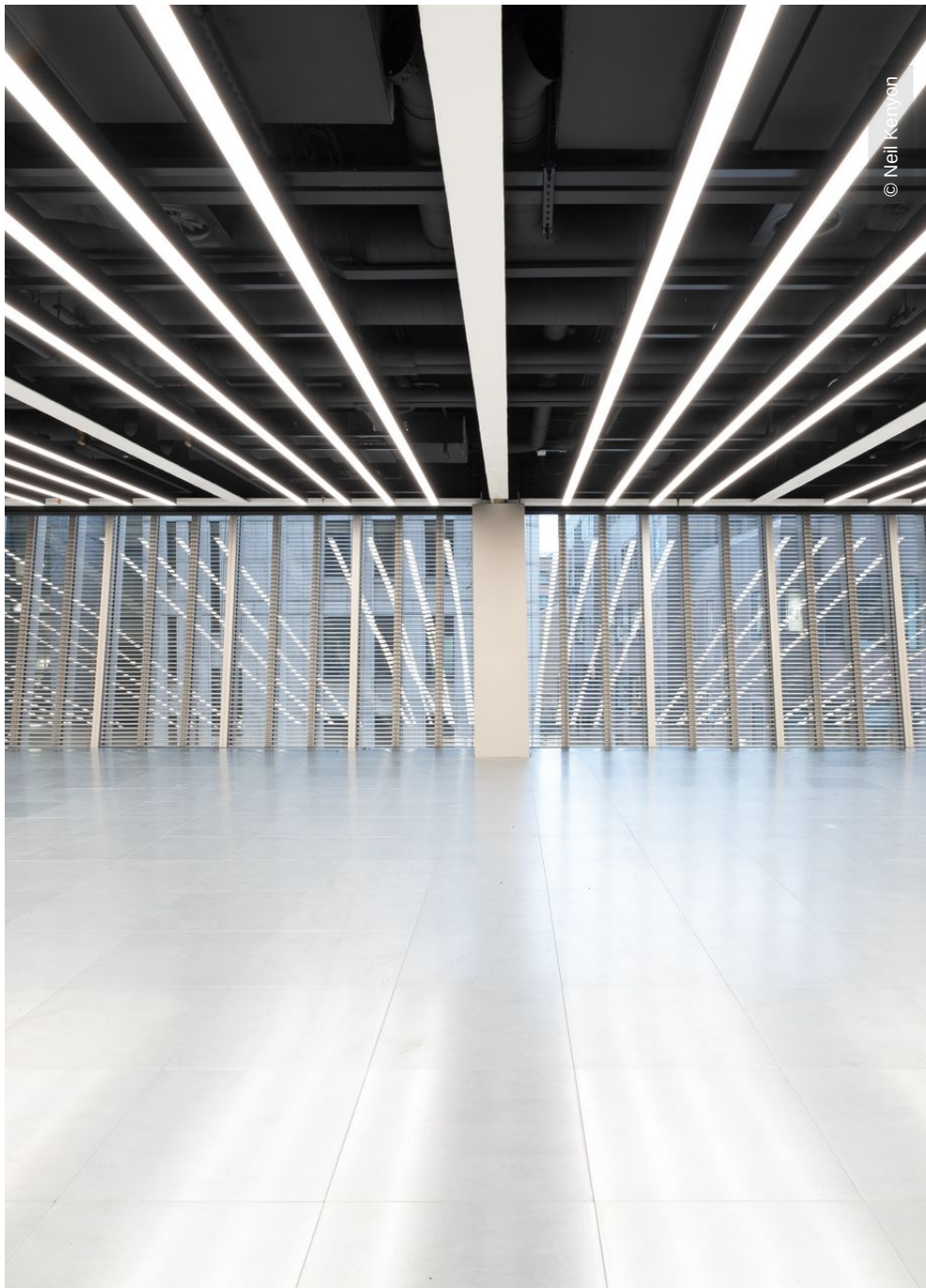


© Neil Kenyon



© Neil Kenyon

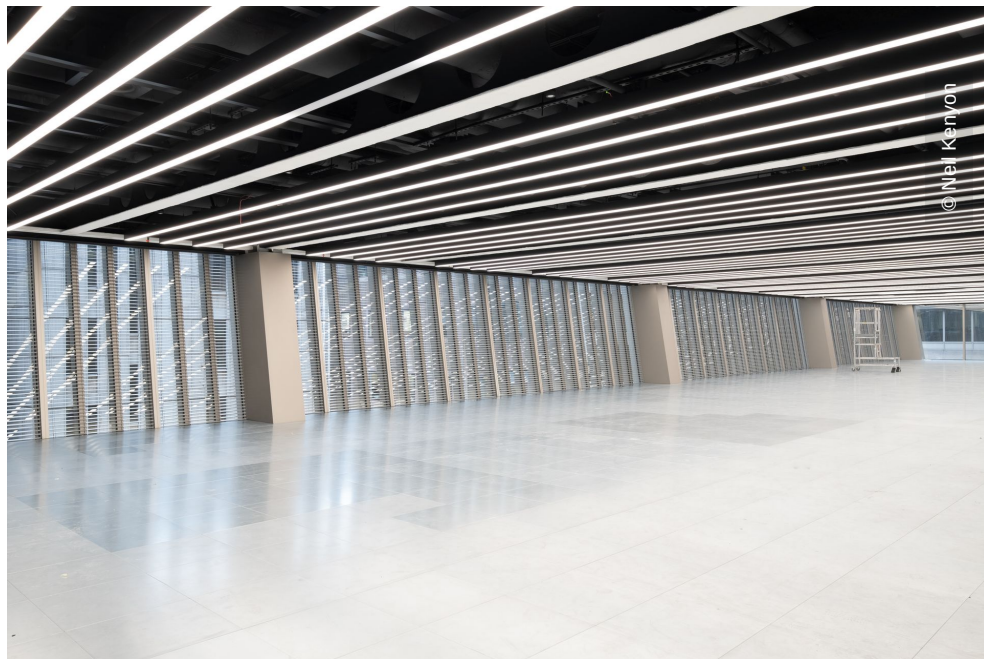




© Neil Kenyon



© Neil Kenyon



© Neil Kenyon