

St. Bernhard-Hospital

Kamp-Lintfort, Germany





Project Description

The St. Bernhard Hospital is part of the St. Franziskus Foundation of Münster, one of the largest Catholic hospital groups in northwest Germany. The clinic has 356 beds and ten specialist clinics and is certified according to DIN EN ISO 9001: 2015 and proCum Cert (confessional certification company). 720 employees look after and treat some 16,000 inpatients and 30,000 outpatients annually. For the 1967 bed house, a large-scale modernization was carried out to raise the individual stations both technically and architecturally to the standards of a modern hospital.

Lindner AG contributed to this construction project with drywall work and the incorporation of Lindner protection ceilings. The services were executed in the floors 2, 5, 6 and 7. The fire protection ceilings are the system LMD F30-A / AB Type 10, which was installed in the corridors of the floors, making an important contribution to structural fire protection. With acoustically effective inlays, the acoustics of the corridors is also improved. A big advantage of the system is its outstanding ease of maintenance. The freestanding ceiling elements can be individually lowered and moved in the floor longitudinally below the other ceiling elements. Thus, no additional ceiling cavity is required for inspection work and the building operation is not disturbed by suspended ceiling elements.

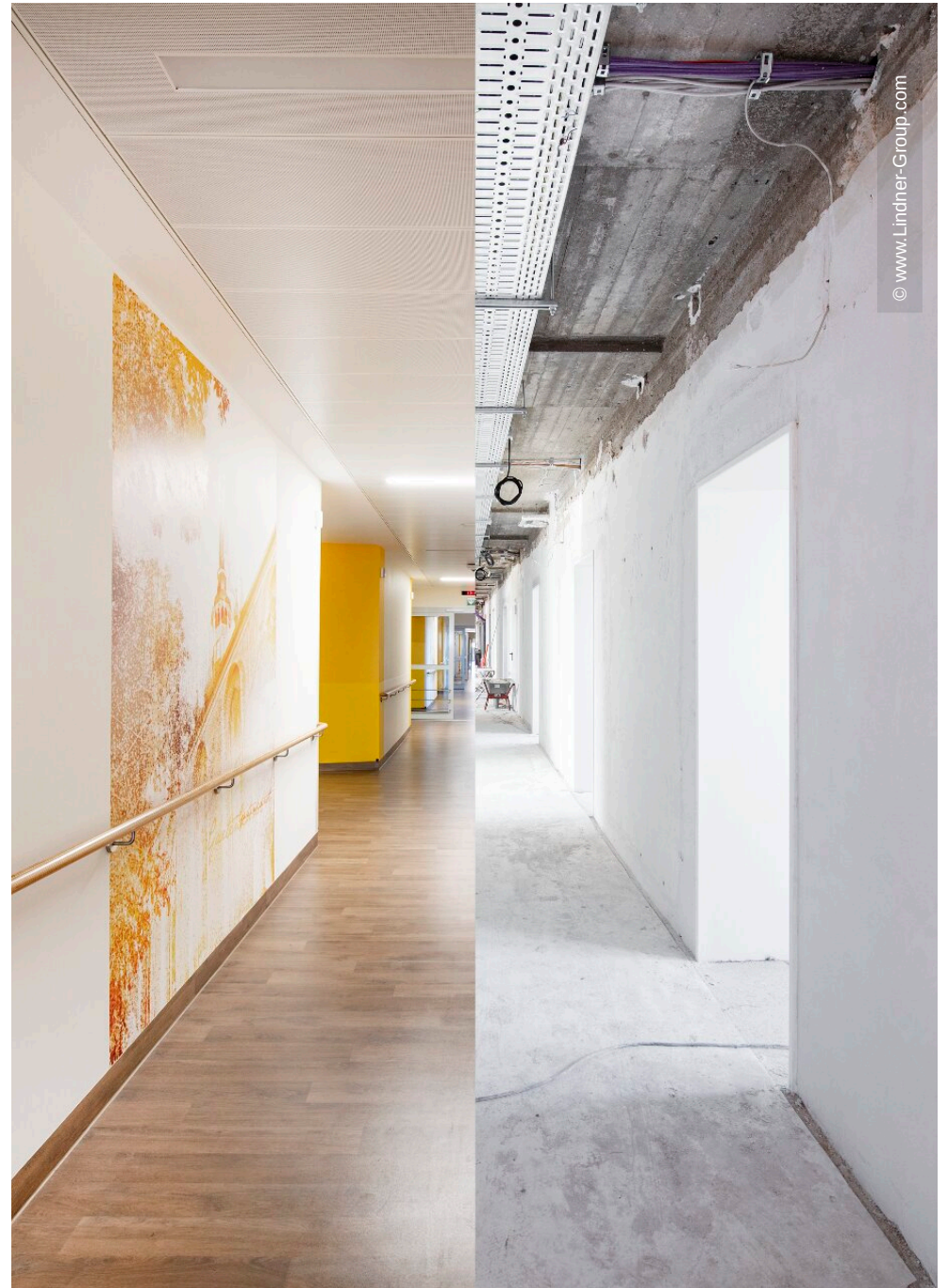
General

Building Type	Clinics and Hospitals
Company Division	Lindner SE Ausbau Nord.Nordwest
Completion	2019

Architect	Architekten Kraft Führes Part. GmbB
Client	St. Bernhard-Hospital Kamp-Lintfort GmbH

Completed Works

- **Ceilings**
 - Fire Rated Metal Ceilings - DIN 4102-2
F30 Swing-Down-Slide 1050 sqm
- Plasterboard ceiling systems 350 sqm
Plasterboard partition systems 1000 sqm

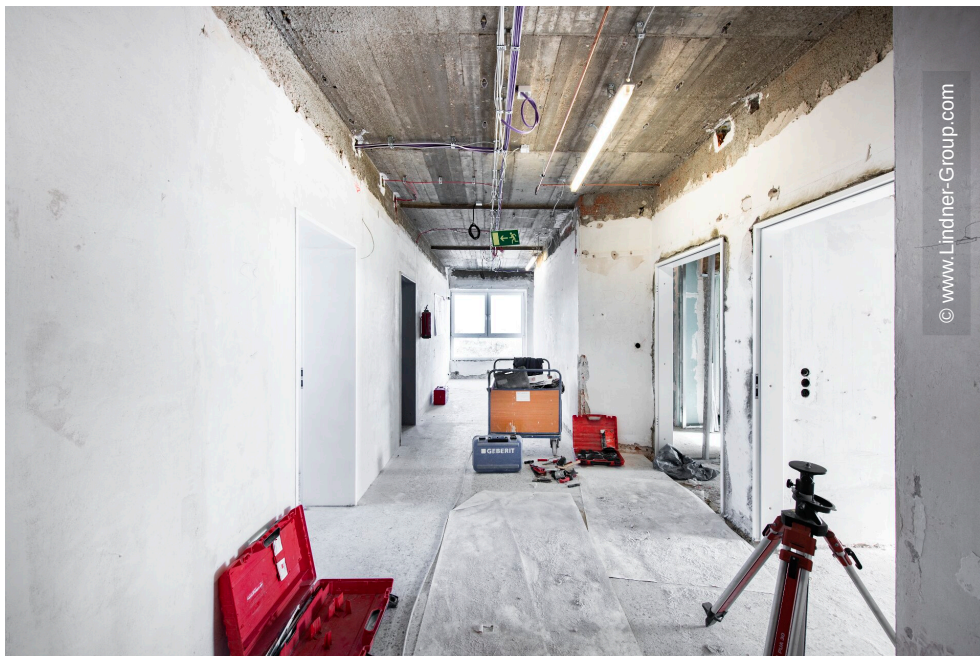




© www.Lindner-Group.com



© www.Lindner-Group.com



© www.Lindner-Group.com



© www.Lindner-Group.com

