

Airport Lounge World

Munich, Germany





Project Description

Numerous modernization and expansion measures are planned for Terminal 1 at Munich Airport, which will decisively shape the appearance of the building over the next few years. Above all, the non-Schengen area will be significantly expanded with its own gate (T1E) until 2023. A forerunner of this large-scale operation is the establishment of a completely new lounge in terminal area B. Covering an area of 1,700 square meters on two floors, the new Airport World Lounge will be able to offer travelers a pleasant stay and plenty of amenities during peak hours, even at peak times to offer the flight. In addition to a variety of dining options in the areas of the café and the bistro, travelers can also enjoy relaxation areas, as well as washrooms and showers. Also a space for meditation and prayers was created. Overall, the lounge offers around 200 seats and a division into various working, rest and relaxation areas.

Lindner AG was commissioned as prime contractor for the expansion work in the Airport Lounge World. The range of services began with dismantling work on a part of the space in which later the lounge was built. After the deconstruction, it was Lindner's responsibility to manage the fit-out works in the lounge and to contribute numerous works of own production. Walls and ceilings were built or cladded with plasterboard. Screed floors were finished for the high-quality look with parquet and natural stone covering. The FLOOR and more® raised floor also created additional floor surfaces as a platform construction with needle felt covering, which house technical installations via their cavities and contribute to the indoor climate with ventilation outlets. Another important service area was carpentry services. These were also created by Lindner, including a wide range of built-in furniture, such as custom-made seating, fitted kitchens, counters, shelves and vanities. Wall claddings with real wood veneer were also produced, most of them designed as baffles and perforated panels on plasterboard walls with building material classes up to A. The prayer room was provided with

full-surface cladding, which had to be adapted to the rounded room shape.

General

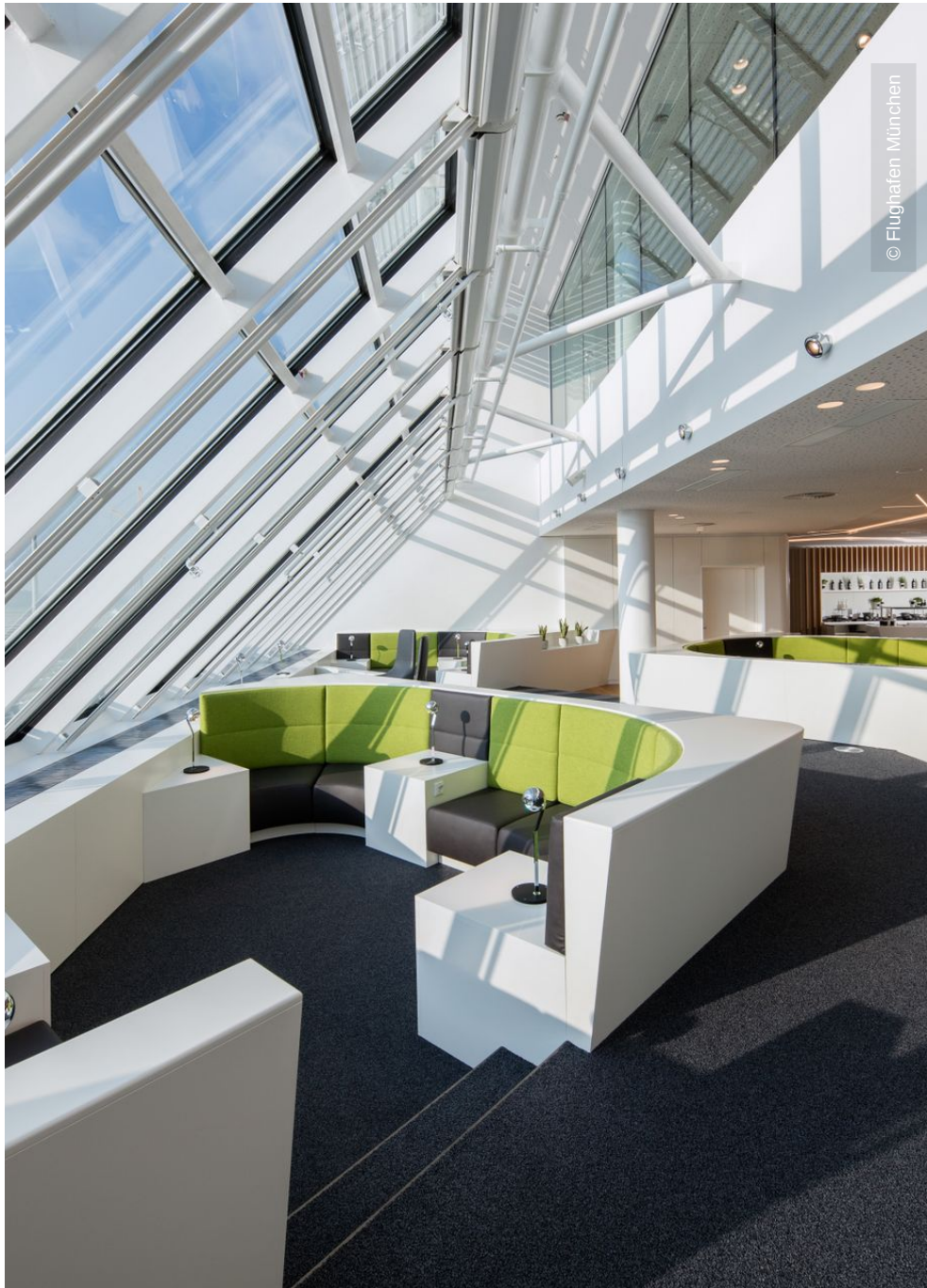
Building Type	Airports
Company Division	Lindner SE Interior Product Supply
Completion	2018

Completed Works

- **Floors**
Coverings
- **Doors**
Wooden doors
- **Partitions**
Wall and ceiling panels
- Plasterboard ceiling systems
Plasterboard partition systems







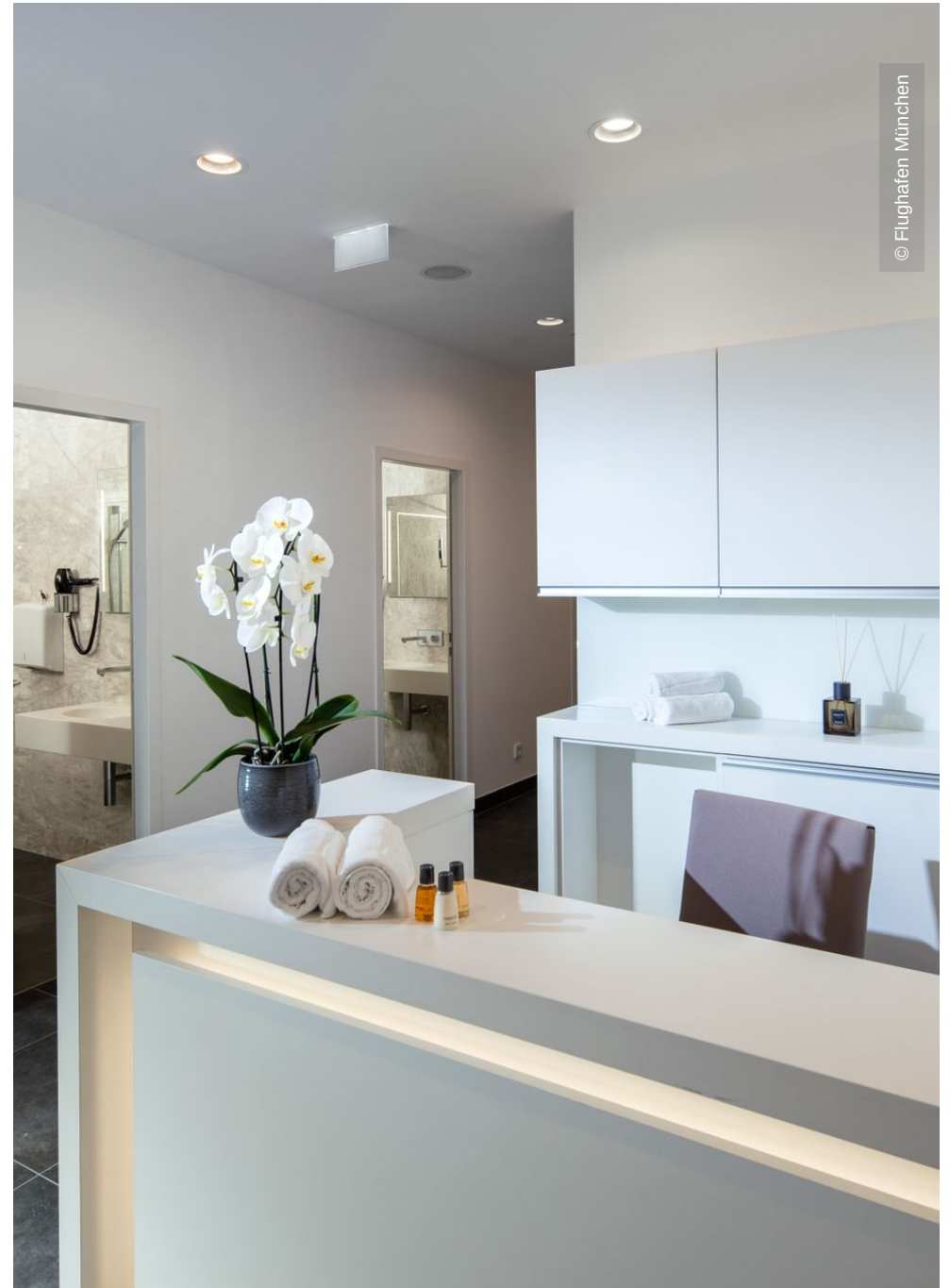
© Flughafen München



© Flughafen München



© Flughafen München





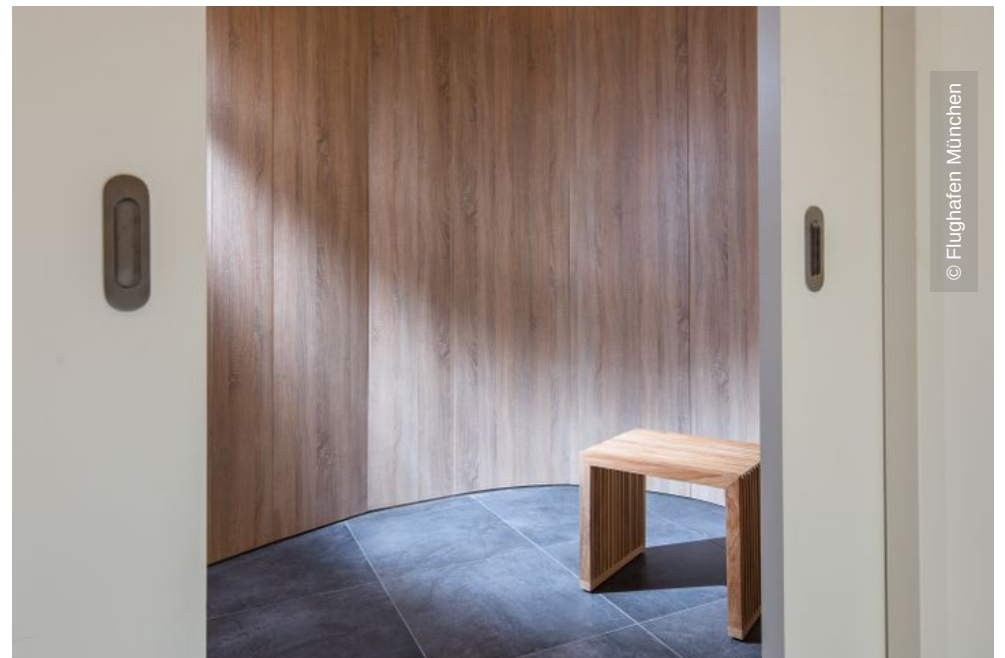
© Flughafen München



© Flughafen München



© Flughafen München



© Flughafen München