

AIDAnova

Papenburg, Germany





Project Description

The AIDAnova is the first vessel of the new Helios class of Carnival Corporation & plc. At 337 meters in length, it is the largest AIDA ship ever. It can accommodate about 6,600 passengers and about 1,500 crew members. The contract for the construction of AIDAnova was awarded to Meyer Werft from Papenburg, which in turn commissioned Lindner SE with the expansion of nine restaurants and bars, including the complete planning, project management and installation. The built-in materials were produced in the in-house production facilities with a high degree of prefabrication. For the wall and ceiling cladding mainly the Lindner lightweight panels COMP + and Lindner plaster systems with IMO certification were used. Some of these lightweight panels have been digitally printed as COMPprint panels. Due to their design versatility, they found their place in a wide variety of areas.

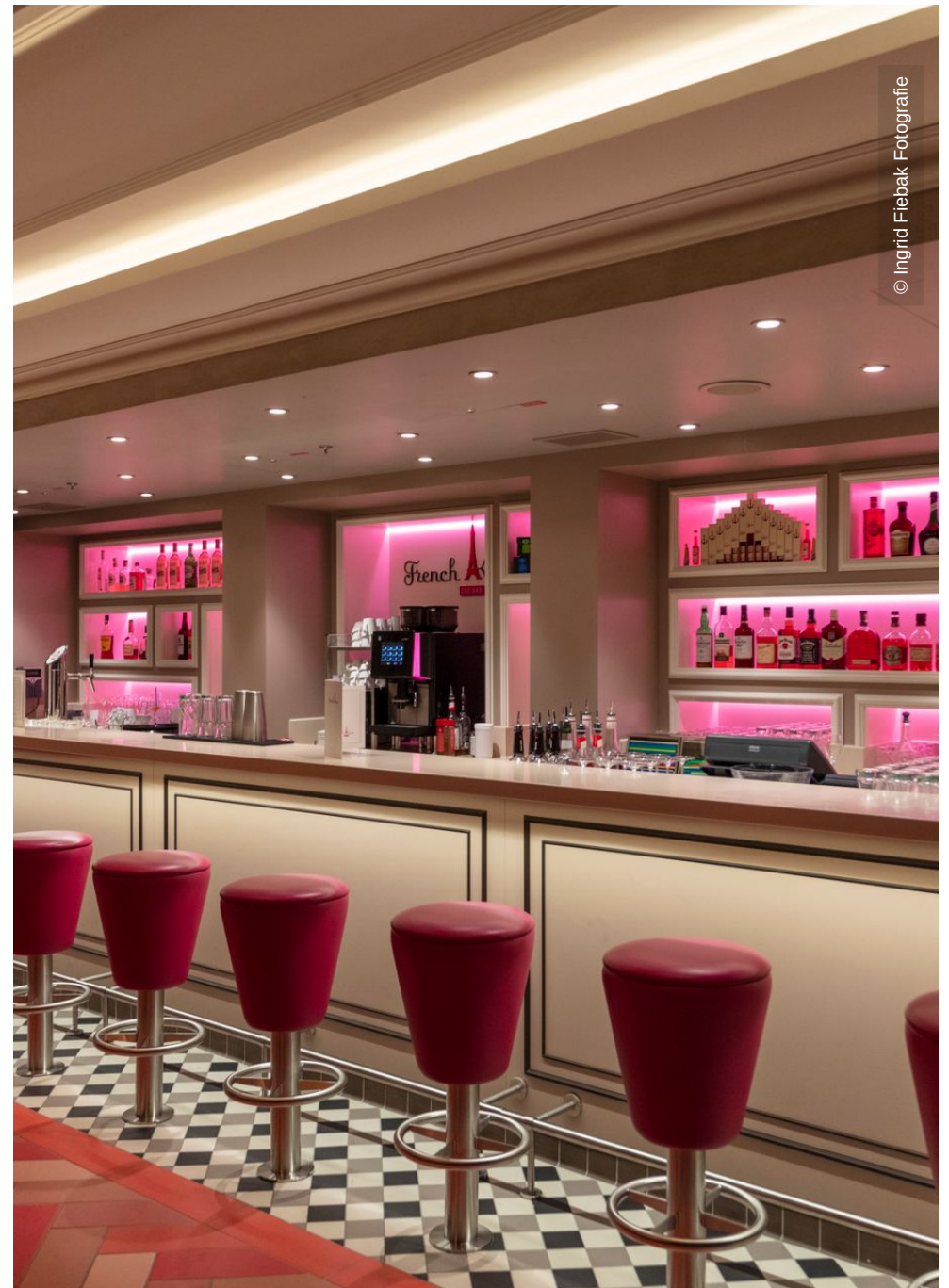
- **Partitions**
Wall and ceiling panels
COMPprint
- **Floors**
Coverings
- **Doors**

General

| | |
|---------------------------|----------------------------|
| Building Type | Ship Fit-out |
| Company Division | Lindner SE |
| Completion | 2018 |
| General Contractor | MEYER WERFT GmbH |
| Client | Carnival Corporation & plc |

Completed Works

- **Ceilings**







© Ingrid Fiebak Fotografie



© Ingrid Fiebak Fotografie



© Ingrid Fiebak Fotografie

