

Suurstoffi Phase 1

Rotkreuz, Switzerland





Project Description

In the Swiss town of Rotkreuz, the Suurstoffi area has become a district with a special focus on sustainability. In its final expansion phase, it will provide space for around 1,500 residents, 2,000 students and over 2,500 jobs. In the first construction phase, among other things, a new campus of the Lucerne University of Applied Sciences was built for more than 1,350 Bachelor's and Master's students with a focus on computer science and business and for about 210 employees. For this reason, the university occupies nine floors of Switzerland's tallest wooden tower, which 60 meters high, as well as an adjoining building on a total of 8 floors. The total area of 16,150 m² will be used for various offices and classrooms. In addition to an auditorium and many smaller seminar rooms, there are also zones for individual learning or group work. Furthermore, the campus has an extensive library, a spacious foyer, a forum and a cafeteria. When it comes to interior design, not only has sustainability been emphasized, but also the fact that the space can be flexibly adapted to the needs and utilization.

The Swiss branch of Lindner SE, together with the business unit Lindner SE | Interior Fit-out and Furnishings has contributed a variety of interior fit-out services to the university's new campus. In the high-rise building, baffle wall claddings made of solid spruce were created. The scope of services was particularly extensive in the neighboring building, where wall and pillar claddings with real wood veneer in oak up to a height of eight meters and partly with fire protection requirements RF1 (A2) were executed. Numerous reveals for doors and elevators as well as light coves have been worked into the claddings. In addition, various built-in elements have been created, including niches for vending machines, waste sorting, water dispensers, notice boards, brochure holders, fire extinguishers and info screens. In some places, a metal wall covering was

chosen. Lindner also provided metal ceilings, both with the system basis as a suspended ceiling and as a grid ceiling.

General

Building Type	Schools
Company Division	Lindner SE - Zweigniederlassung
Completion	2019
Client	Lucerne University of Applied Sciences and Arts
Architect	Büro Konstrukt, Manetsch Meyer AG

Completed Works

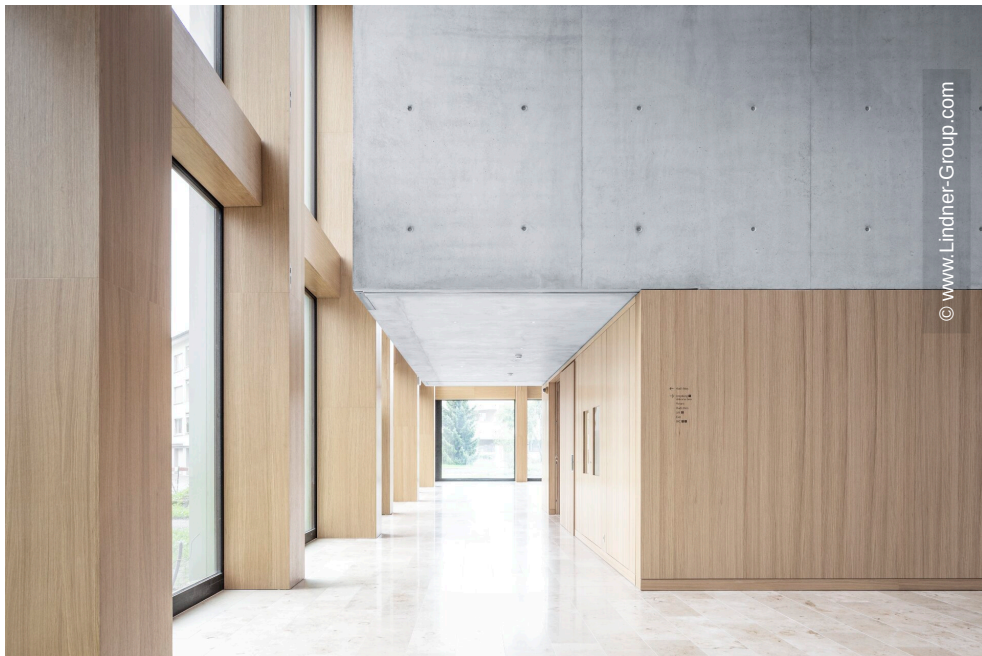
- **Partitions**

Wall and ceiling panels	
FIREwood	200 sqm
Lindner Free Timber	1500 sqm
Lindner Free Metal	75 sqm

- **Ceilings**

Fire Rated Metal Ceilings	
Hook-On Ceilings	50 sqm

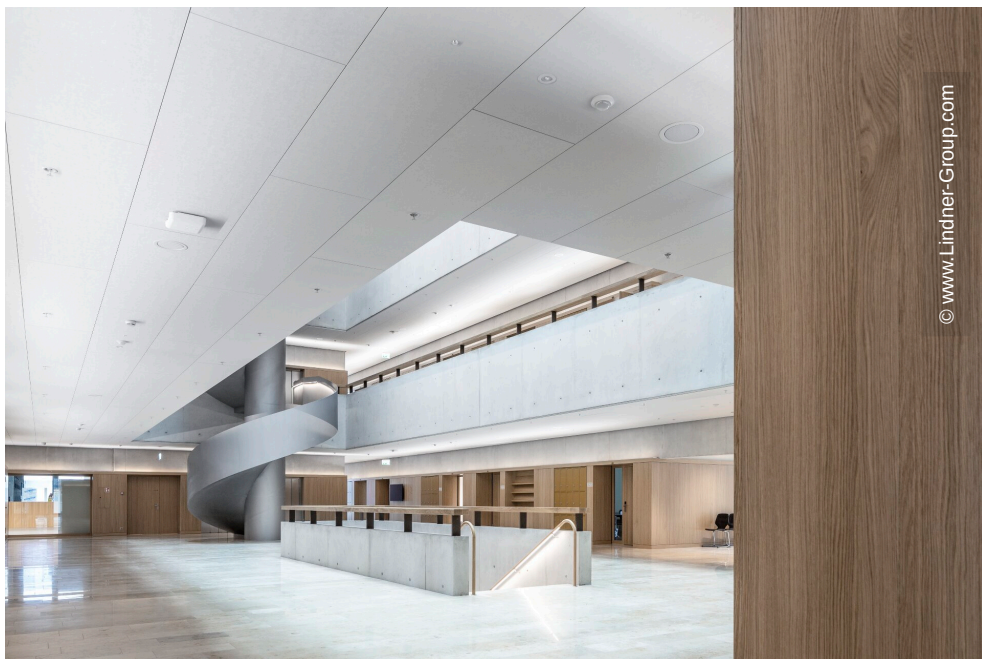




© www.Lindner-Group.com



© www.Lindner-Group.com



© www.Lindner-Group.com



© www.Lindner-Group.com



