

KGS Niederrad

Frankfurt, Germany





Project Description

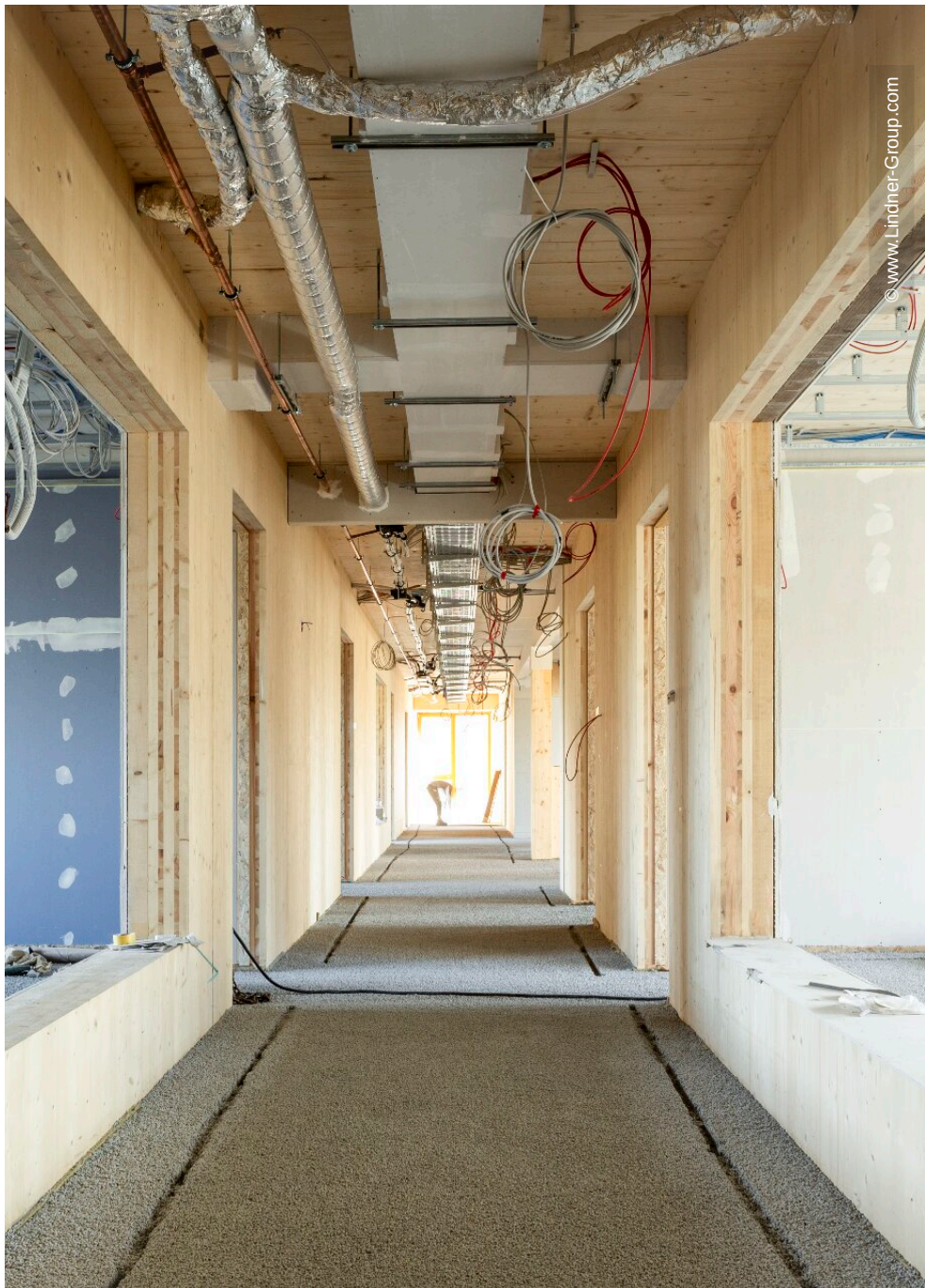
Lindner was able to participate in the modernization of the school building. The individual areas were modernized during the ongoing school lessons. In order to guarantee a quick and easy implementation of the reconstruction work, the client decided to use the NORIT-Dry Screed.

General

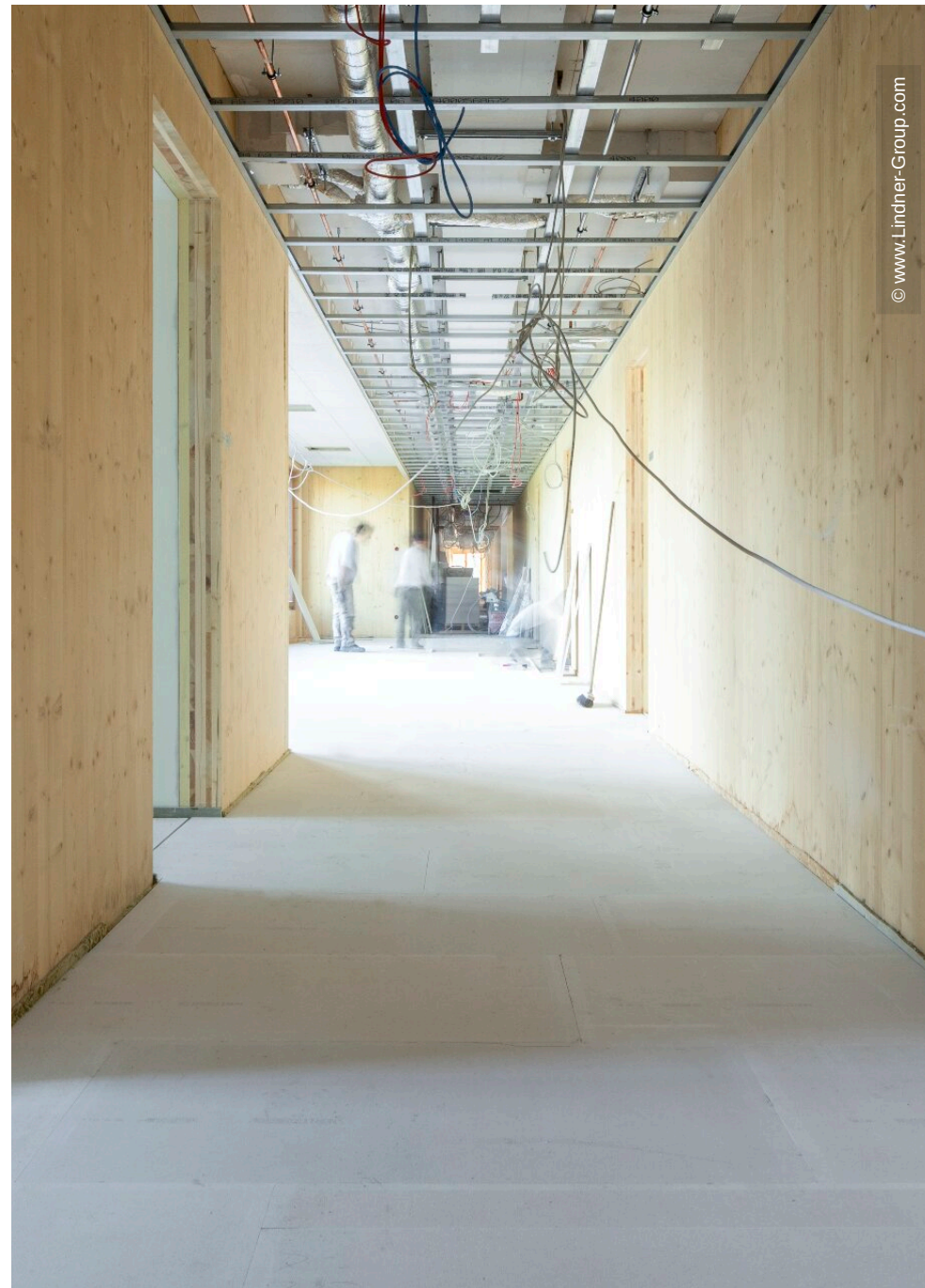
Building Type	Schools
Company Division	Lindner Gipsfaser- und Trockenbau
Completion	2018
Client	KGS Niederrad

Completed Works

- Dry lining



© www.Lindner-Group.com



© www.Lindner-Group.com





