

The Exchange 106

Kuala Lumpur, Malaysia





© Mulia Property Development

Project Description

Kuala Lumpur, Malaysia, has recently been home to one of the world's tallest buildings, at 492 meters high and 106 stories. It is the central location of the city's new international financial and banking center.

As soon as you arrive, you realize that this is a very special building. The entire forecourt area has an exterior ceiling of the Lindner Lunar type.

If you continue into the foyer, you will immediately notice the special ceilings with ARTline and Eloxal Silver surfaces. A special accent is set here by the 140 linear meters of special stainless steel lighting called Hula Hoop, which runs around the entire core of the building.

Elevator users pass through one of the many elevator lobbies, with special ceiling constructions with ARTline surfaces, and adjoining corridors with suspended ceilings whose surfaces are made of anodized silver.

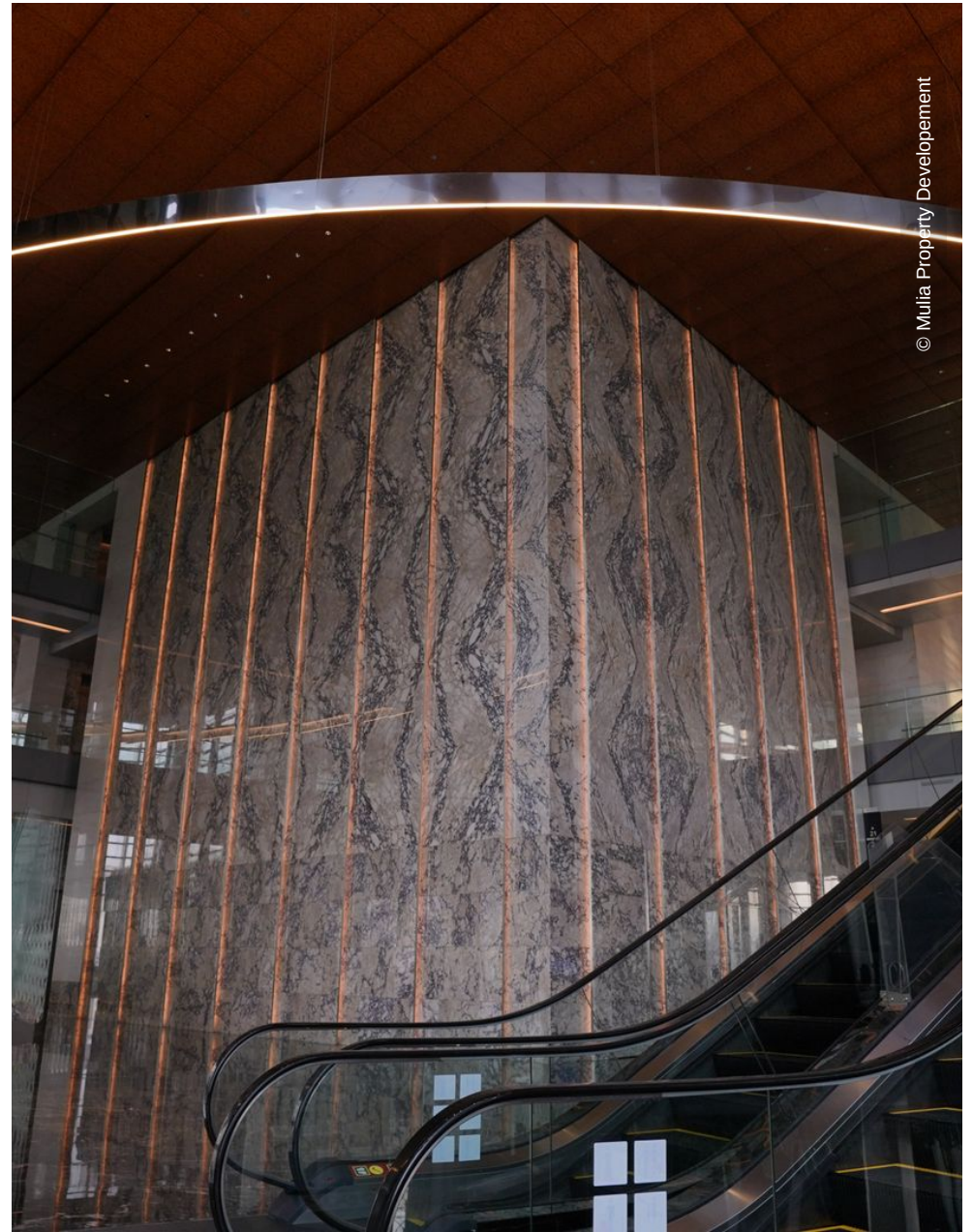
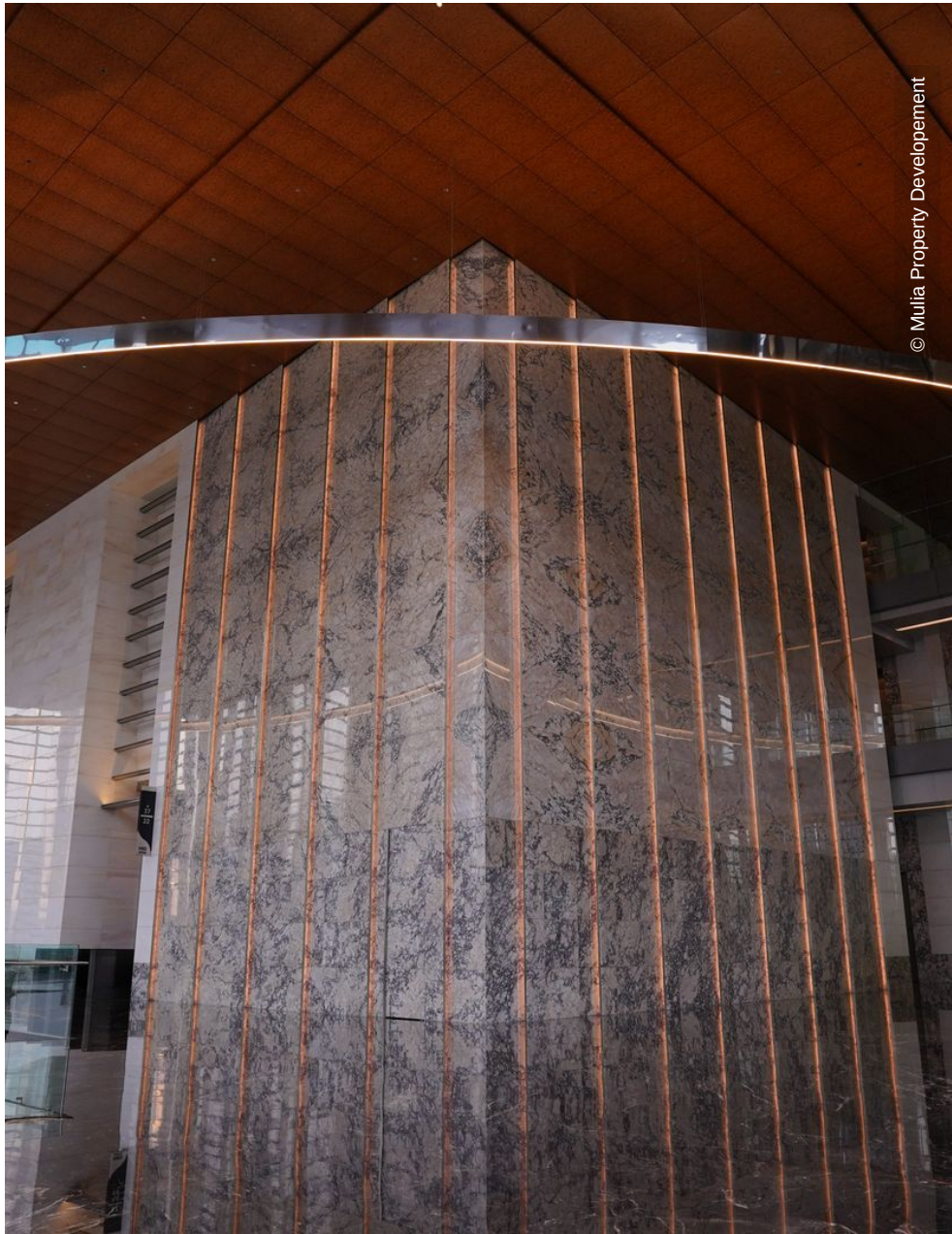
In the Sky Lobby on floor 48, one can then enjoy the view over the city, again under special ceilings with ARTline coating and stainless steel ceilings.

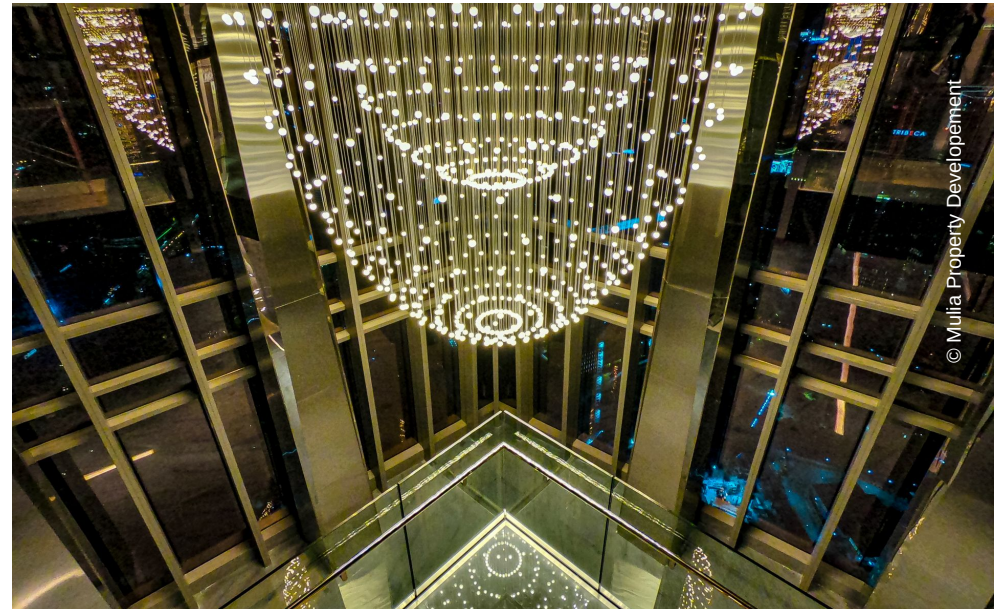
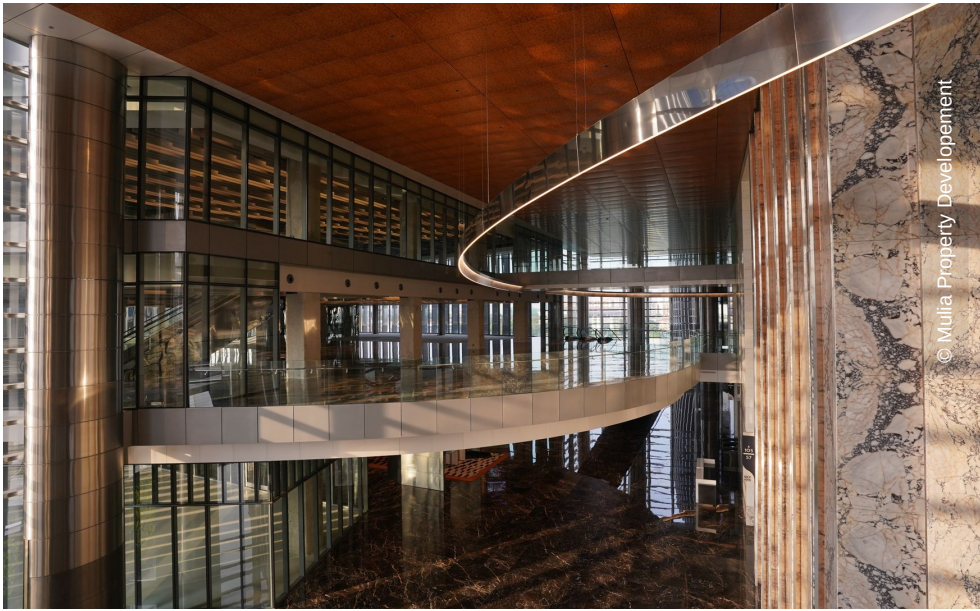
General

Building Type	Office buildings
Company Division	Lindner SE I Interior Product Supply
Completion	2016 - 2019
Architect	MULIA Group

Completed Works

- **Ceilings**
 - Hook-On Ceilings 23000 sqm
 - Design Surfaces
 - TOUCHdesign Lunar 750 sqm
- **Luminaires**
 - Custom luminaires







© Mulia Property Development



© Mulia Property Development



© Mulia Property Development