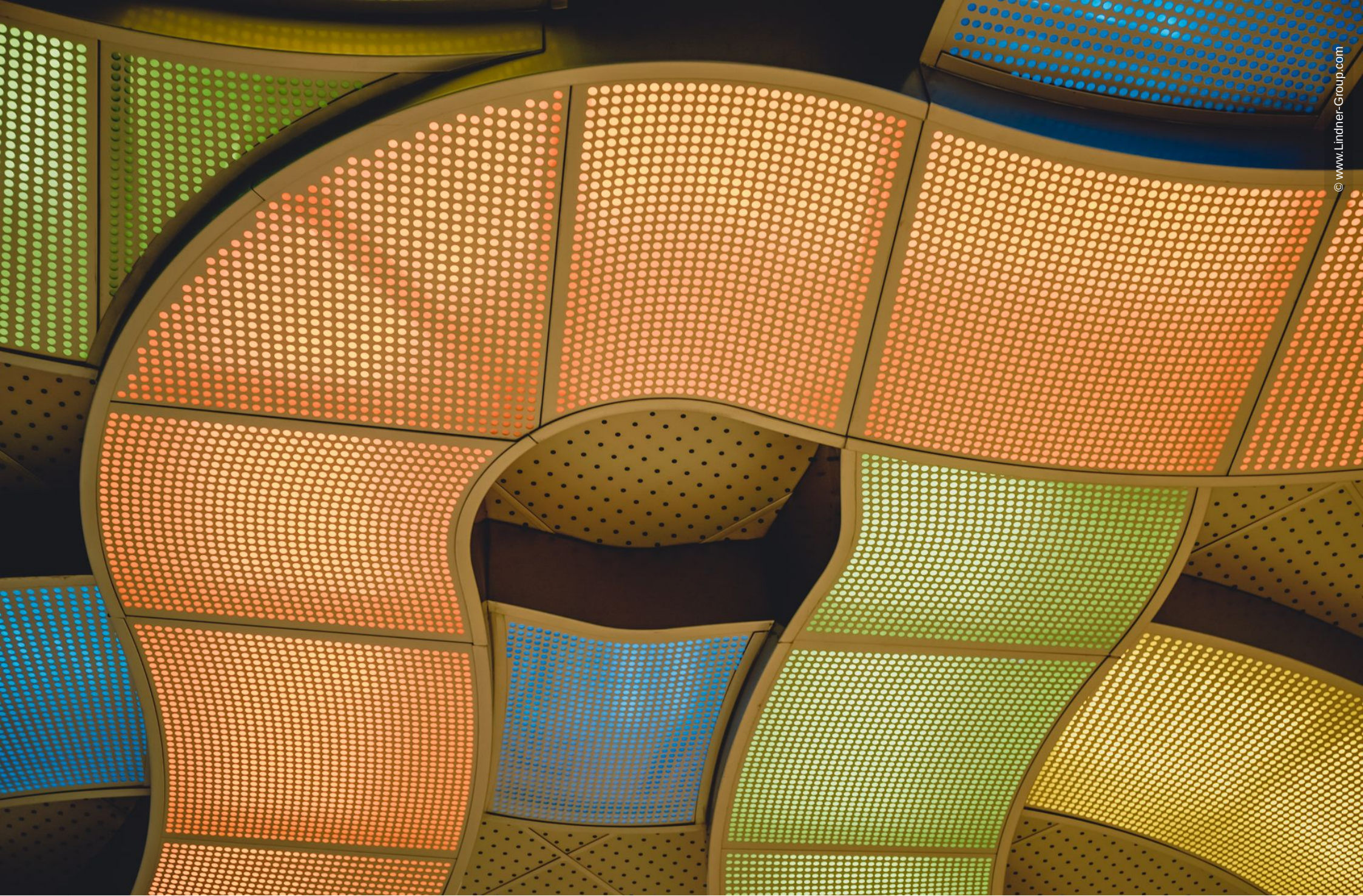


Charlotte Douglas International Airport

Charlotte, United States





Project Description

Lindner Custom Ceilings.

Perforated metal panels with extruded curved trim. The main focus of this project is on proximity to the main terminal building while accommodating current and future infrastructure, the new passenger and commercial vehicle lane expansion project - underground and overhead pedestrian walkways - to the current main terminal and future main terminal expansions. The colors and curves of the different ceilings systems are an eye-catcher and have multisided purposes serving the building function.

General

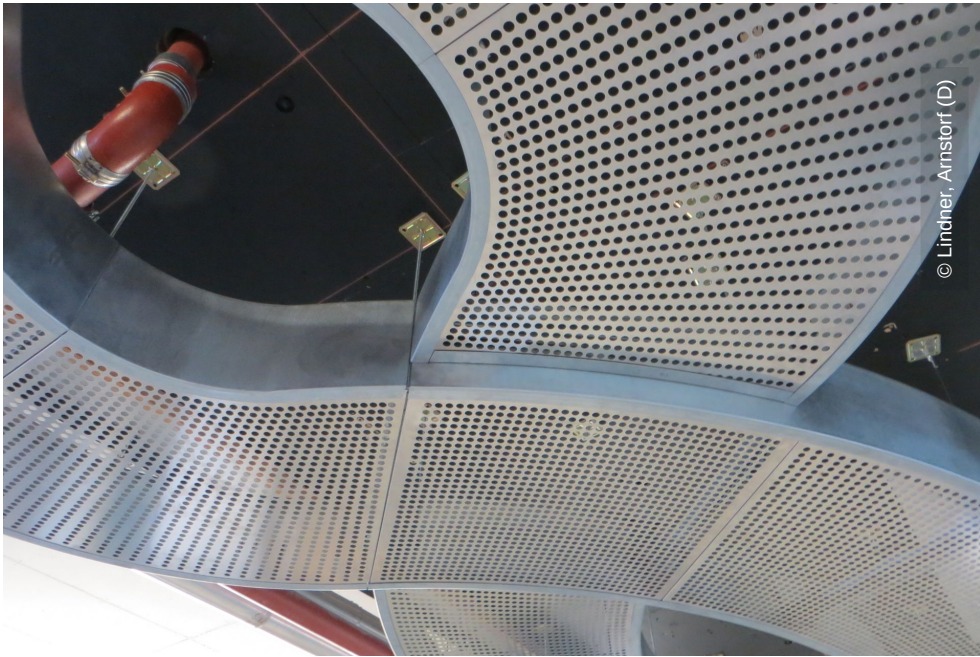
Building Type	Airports
Company Division	Lindner USA Inc.
Completion	2015
Client	Warco Construction
Architect	HTNB

Completed Works

- **Ceilings**

Expanded Metal Ceilings

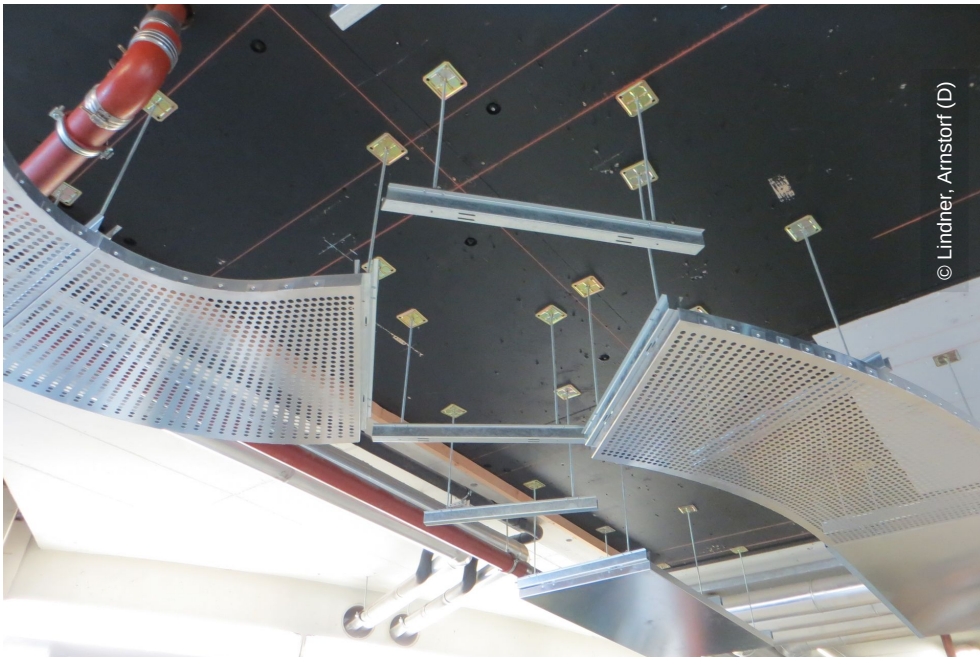




© Lindner, Arnstorf (D)



© Lindner, Arnstorf (D)



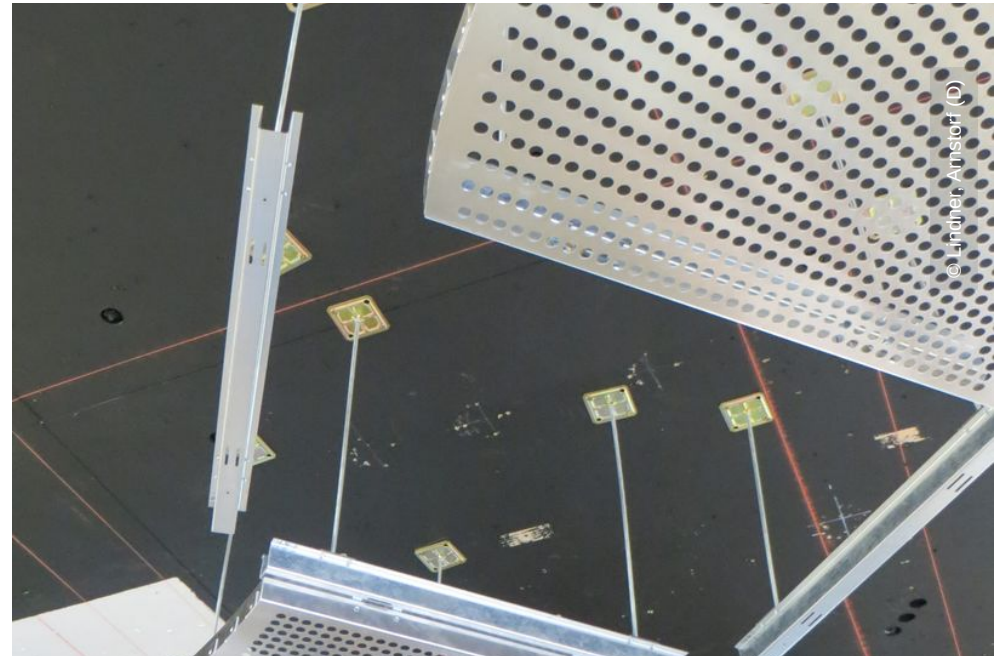
© Lindner, Arnstorf (D)



© Lindner, Arnstorf (D)



© Lindner, Arnstorf (D)



© Lindner, Arnstorf (D)



© Lindner, Arnstorf (D)



© Lindner, Arnstorf (D)



© Lindner, Arnstorf (D)



© www.Lindner-Group.com



© www.Lindner-Group.com