

# Hilti Innovation Centre

Kaufering, Germany





# Project Description

The Hilti site in Kaufering near Munich is among the largest locations of the well-known construction technology company. The new innovation centre for fire protection and bonded anchors offers offices and meeting rooms as well as laboratories and testing areas, along with a welcoming atrium. The open architecture is intended to promote cooperation, communication, integration, transparency, and flexibility.

Lindner Building Envelope Ltd was responsible for the planning and installation of the highly thermally insulated aluminium mullion-transom façade, which sits atop a building base in the manner of a window band. The alternating opaque and transparent window bands ensure plenty of daylight along the entire length of the building. The basic construction of the window bands was realised using multiple folded, galvanised steel frame sheets. A combination of substructure, insulation, and suspended LM sheet metal cassettes ensures efficient insulation and thermal separation as well as weather resistance. The corners of the window bands are fitted with two mullion profiles and a corner glass insulation panel mounted on three sides, which provides additional stability and conceals the supporting pillars in the building. The façade areas adjacent to the window bands were implemented with a sheet metal cladding or, in the base area, with a ventilated GFB cladding. In the top floors, an external louvre profile serves as structural sun protection or privacy shield to the adjacent buildings. Furthermore, the louvre structure gives the building a relaxed appearance and contributes to the special character of the new Hilti Innovation Centre.

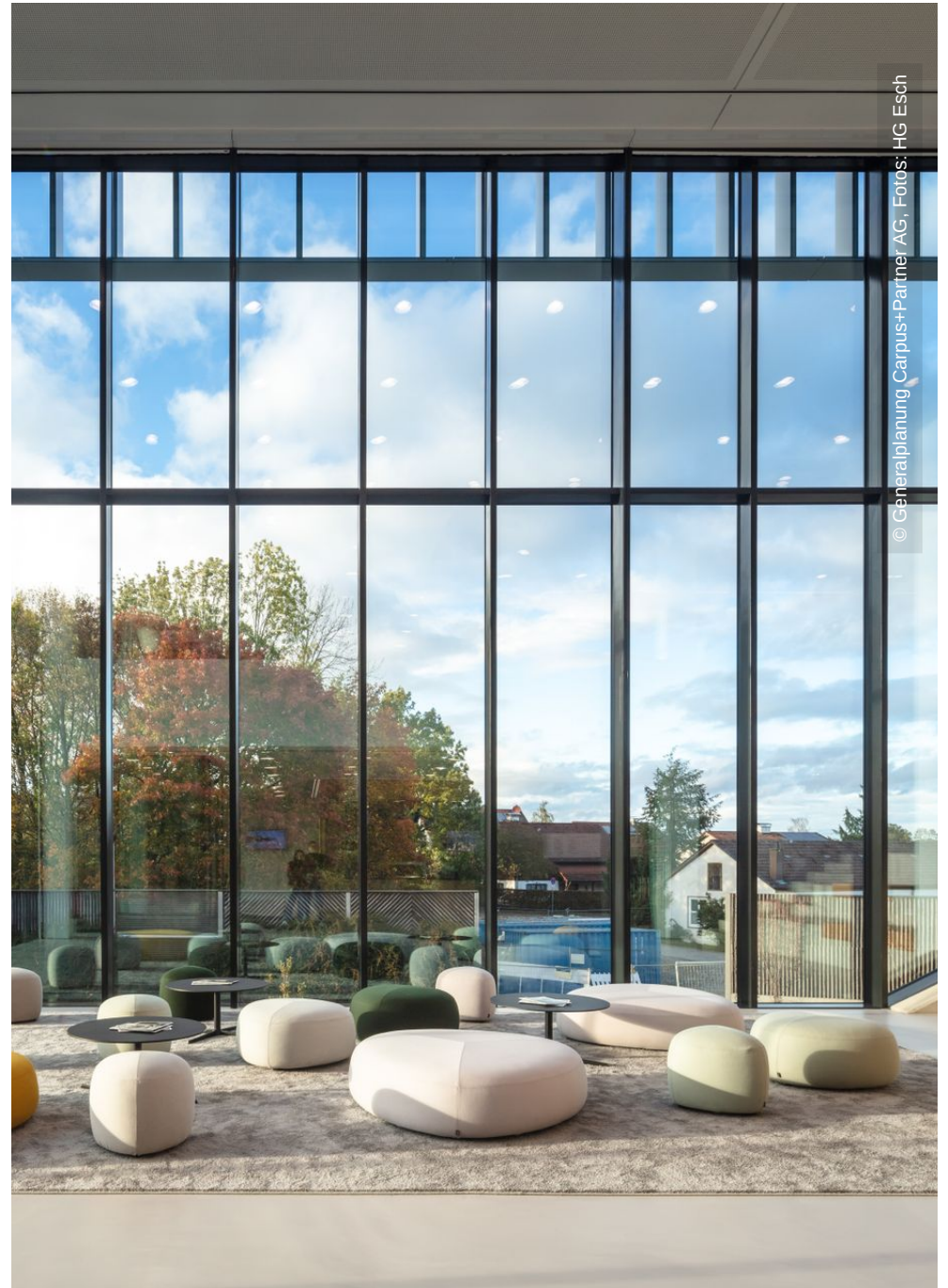
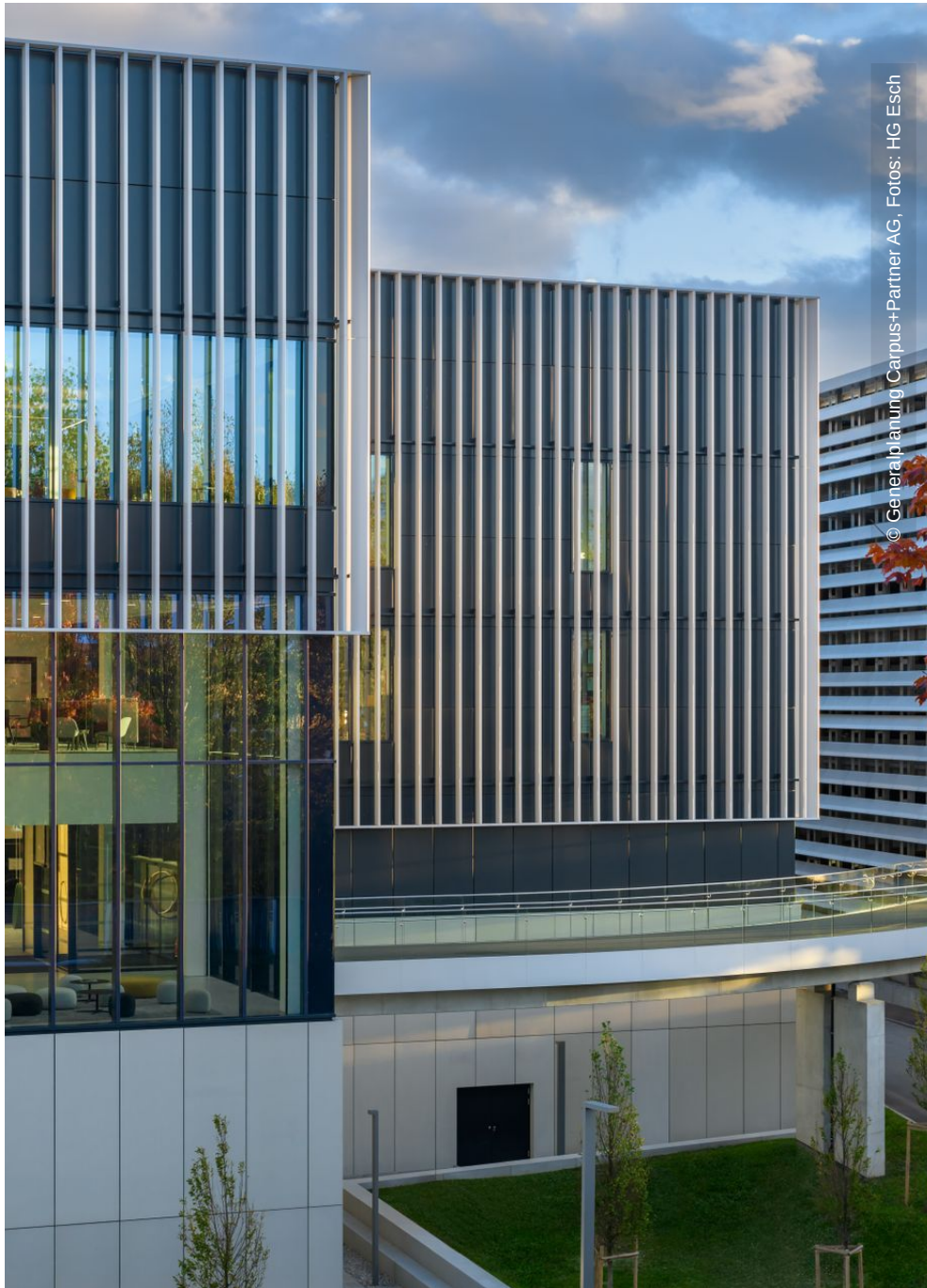
## General

<b>Building Type</b>	Office buildings, Research Rooms
----------------------	----------------------------------

<b>Company Division</b>	Lindner Building Envelope GmbH
<b>Completion</b>	2023
<b>General Planning</b>	Carpus+Partner AG
<b>Proprietor</b>	Hilti

## Completed Works

- **Facades**  
Stick-Curtain Walling  
Windows





© Generalplanung Carpus+Partner AG, Fotos: HG Esch



© Generalplanung Carpus+Partner AG, Fotos: HG Esch



© Generalplanung Carpus+Partner AG, Fotos: HG Esch



© Generalplanung Carpus+Partner AG, Fotos: HG Esch

