

Redmolen Nordhavn

Copenhagen, Denmark





Project Description

At the tip of Nordø, the office building Redmolen has created a new urban space in Copenhagen, embodying a vision of openness, robustness, and dynamism. In addition to numerous office spaces, the round building includes a publicly accessible ground floor with a variety of shops, restaurants, cafes, exhibitions, and a canteen. The greening inside also gives the atrium a lively atmosphere.

The unique character of the atrium is highlighted by 58,000 linear metres of RIBline wall and ceiling cladding in the public areas, which Lindner IPC realised for the project. The slats in real wood veneer are particularly convincing due to their sustainable gypsum core, which makes the system fire-resistant according to EN 13501. This feature also minimises smoke development and prevents dripping, facilitating the evacuation of the building. The FGD gypsum used in the cladding is also made from waste paper and is 100% recyclable. Additionally, Lindner cooling ceilings over an area of 16,000 m² ensure a consistently pleasant indoor climate in the office and rental spaces.

General

Building Type	Office buildings
Company Division	Lindner SE I International Projects Contracting
Completion	2021 - 2024
Architect	Vilhelm Lauritzen Cobe Architects

Completed Works

- **Partitions**

Wall and ceiling panels

RIBline Timber Slats Wall

RIBline Timber Slats Ceiling

58000 Running meter

- **Ceilings**

Heated and Chilled Post Cap Ceilings

Plafotherm® B 100

- **Luminaires**

System luminaires for metal ceilings

3800 Pcs.



© www.Lindner-Group.com



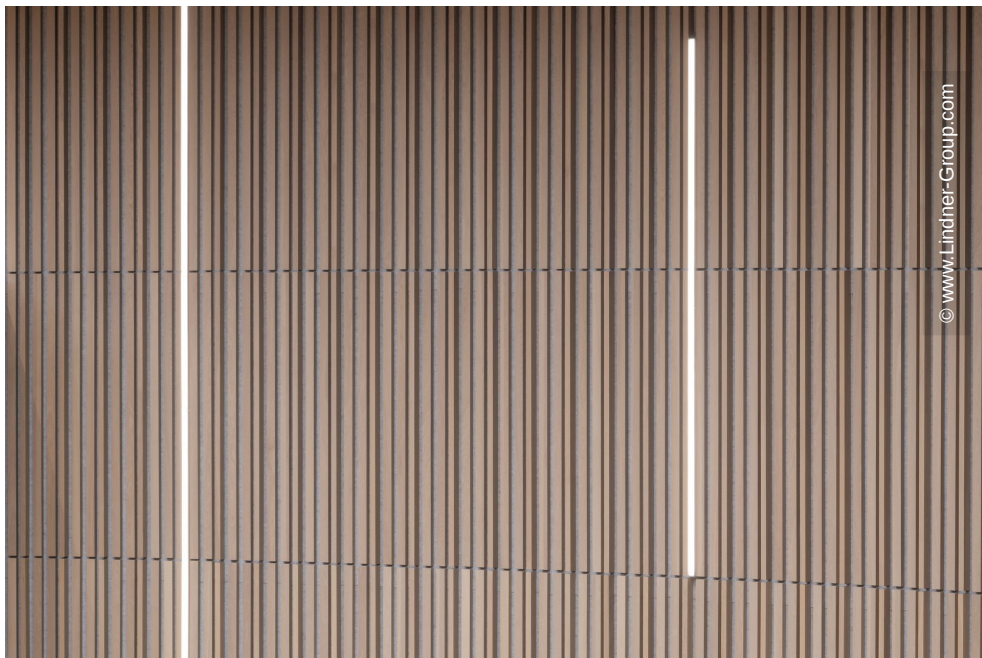
© www.Lindner-Group.com



© www.Lindner-Group.com



© www.Lindner-Group.com

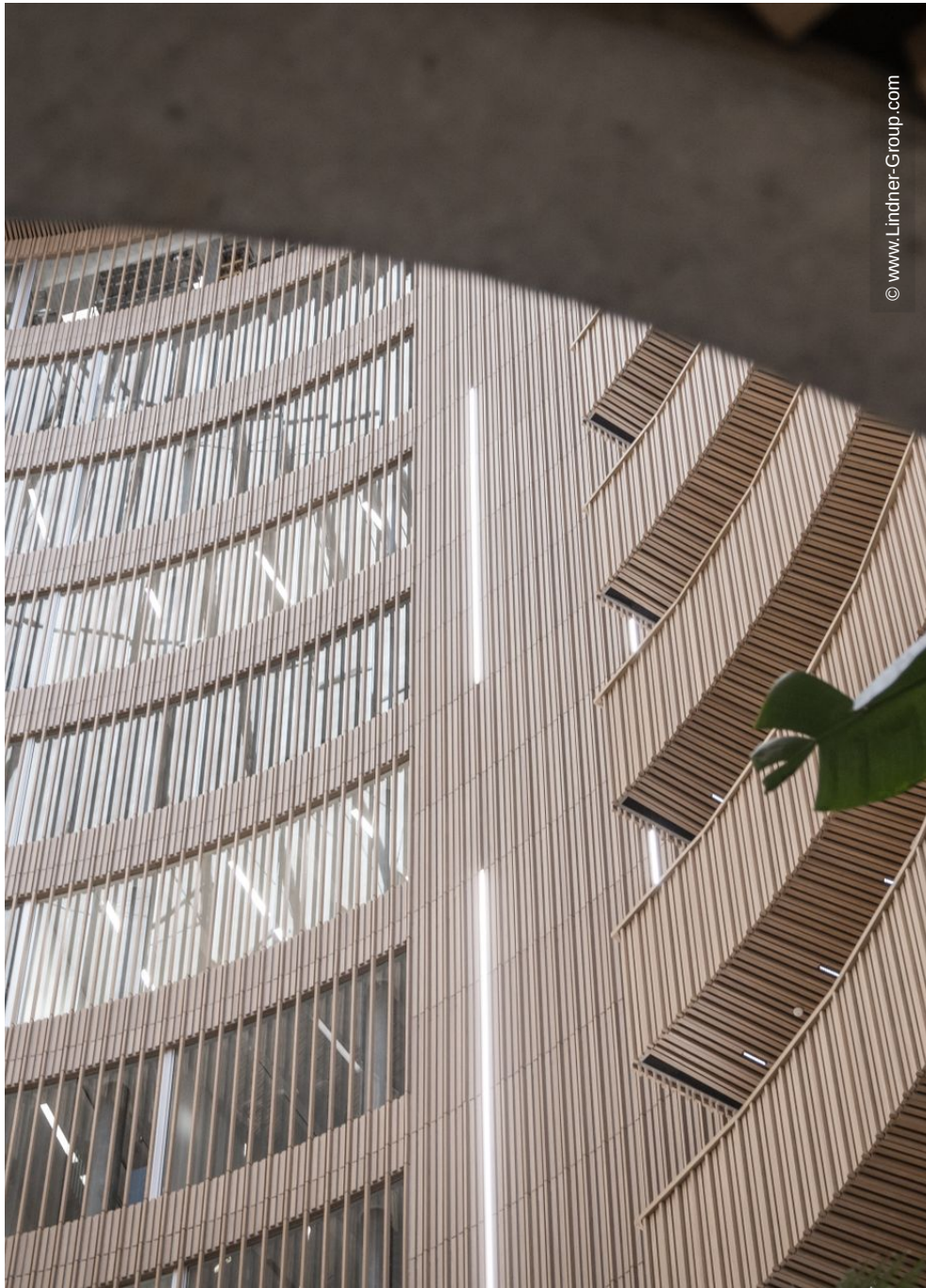


© www.Lindner-Group.com

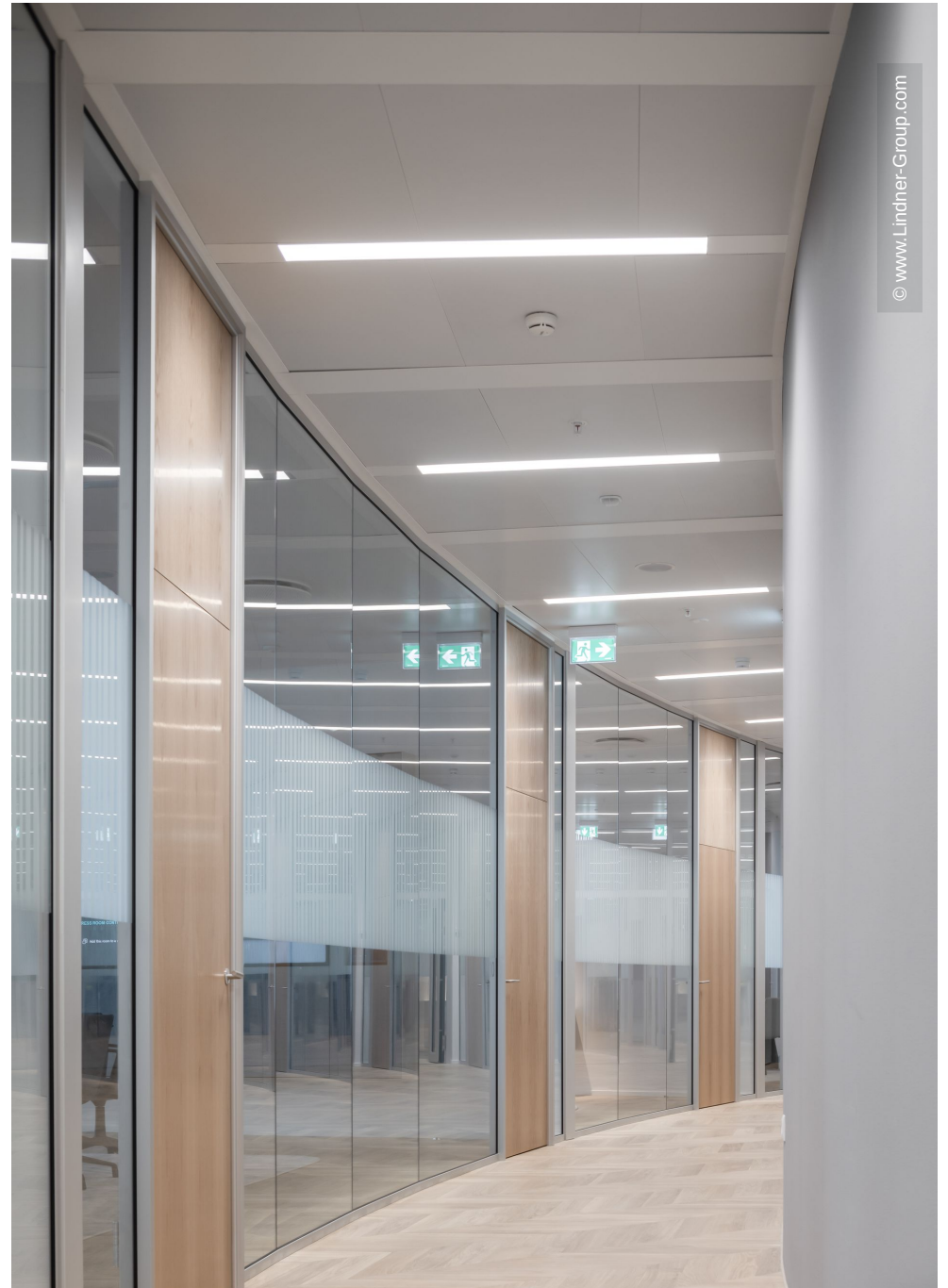


© www.Lindner-Group.com





© www.Lindner-Group.com



© www.Lindner-Group.com

