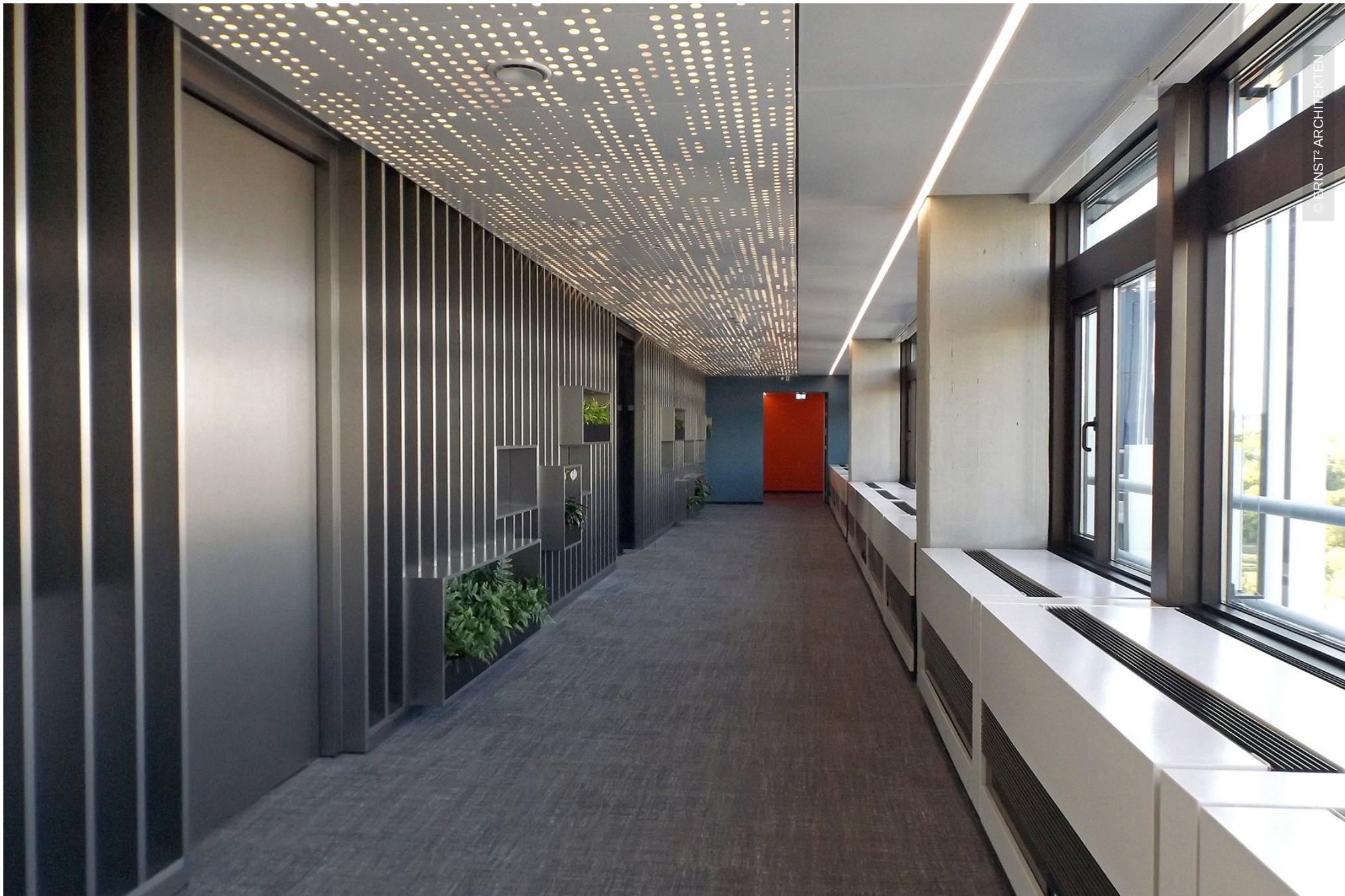


# Broadcasting centre

Stuttgart, Germany





© ERNST+ARCHITEKTEN

# Project Description

The SWR broadcasting centre in Stuttgart shines in new splendour thanks to a comprehensive renovation of the 13-storey building, equipped with the latest radio and television studios. In the modern production and recording studios, radio, television, and the internet are interconnected, enabling multimedia collaboration among the editorial teams. With the revitalisation, SWR receives a forward-thinking building whose architecture reflects the modern corporate structure and culture. 330 newly equipped workstations now meet the new requirements of the digital media world.

A special highlight is the translucent metal ceiling in the corridors, which was specially developed by Lindner in collaboration with the interior designers from the Ipolito Fleitz Group and Ernst<sup>2</sup> Architekten. The ceiling covers an area of 885 m<sup>2</sup> and stands out for its individually designed perforation and lighting, creating a special ambiance in the corridors. So-called light cannons, recesses in the ceiling, provide additional light transmission and optimal illumination. In the corridors, Lindner F30 plasterboard fire protection ceilings were also used, while heated/chilled ceiling systems were chosen for the office areas to ensure optimal room climate support.

## General

<b>Building Type</b>	Office buildings, Broadcasting Rooms, Television Studios, Film- & Recording Studios
<b>Company Division</b>	Lindner SE   Ceilings
<b>Completion</b>	2019 - 2020

<b>Specialist Planner</b>	T.P.I. Trippe und Partner Ingenieurgesellschaft
<b>Interior Architecture</b>	Ipolito Fleitz Group
<b>Architect</b>	ERNST <sup>2</sup> ARCHITEKTEN
<b>Client</b>	Südwestrundfunk (SWR)

## Completed Works

- **Ceilings**
  - Heated and Chilled Hook-On Ceilings  
Plafotherm<sup>®</sup> E 213 3650 sqm
  - Cassette Ceilings  
LMD-K 420 170 sqm
  - Luminous ceilings 885 sqm
- Plasterboard ceiling systems 515 sqm

