

# ERGO Group AG

Munich, Germany





© www.Lindner-Group.com

# Project Description

The ERGO building complex in Munich is characterised by its two structured buildings and a spacious glazed entrance hall with extensive galleries. As part of the remodelling of the entrance hall, the focus was particularly on renewing the ageing metal wall panels in the galleries. The aim of the project was to restore the atrium to its original state by comprehensively refurbishing the existing elements, while at the same time implementing modern sustainability standards.

Lindner SE took on the challenging task of revitalising the atrium's metal wall panels. These had originally been produced and installed by Lindner and had shown clear signs of ageing after 30 years of use. The old panels were therefore carefully dismantled in Munich, and then sanded down and recoated in Arnstorf. The refurbished metal panels were then reinstalled in the atrium to preserve the characteristic look of the reception hall. By using high-quality partition wall systems such as the Logic Metal solid wall and Lindner Life Stereo 125 glass partition walls, as well as customised door elements, Lindner was able to successfully implement the project-specific sustainability goals. By upgrading and reusing existing materials, not only was the aesthetic value of the building significantly increased, but an important contribution was also made to the sustainability of existing buildings.

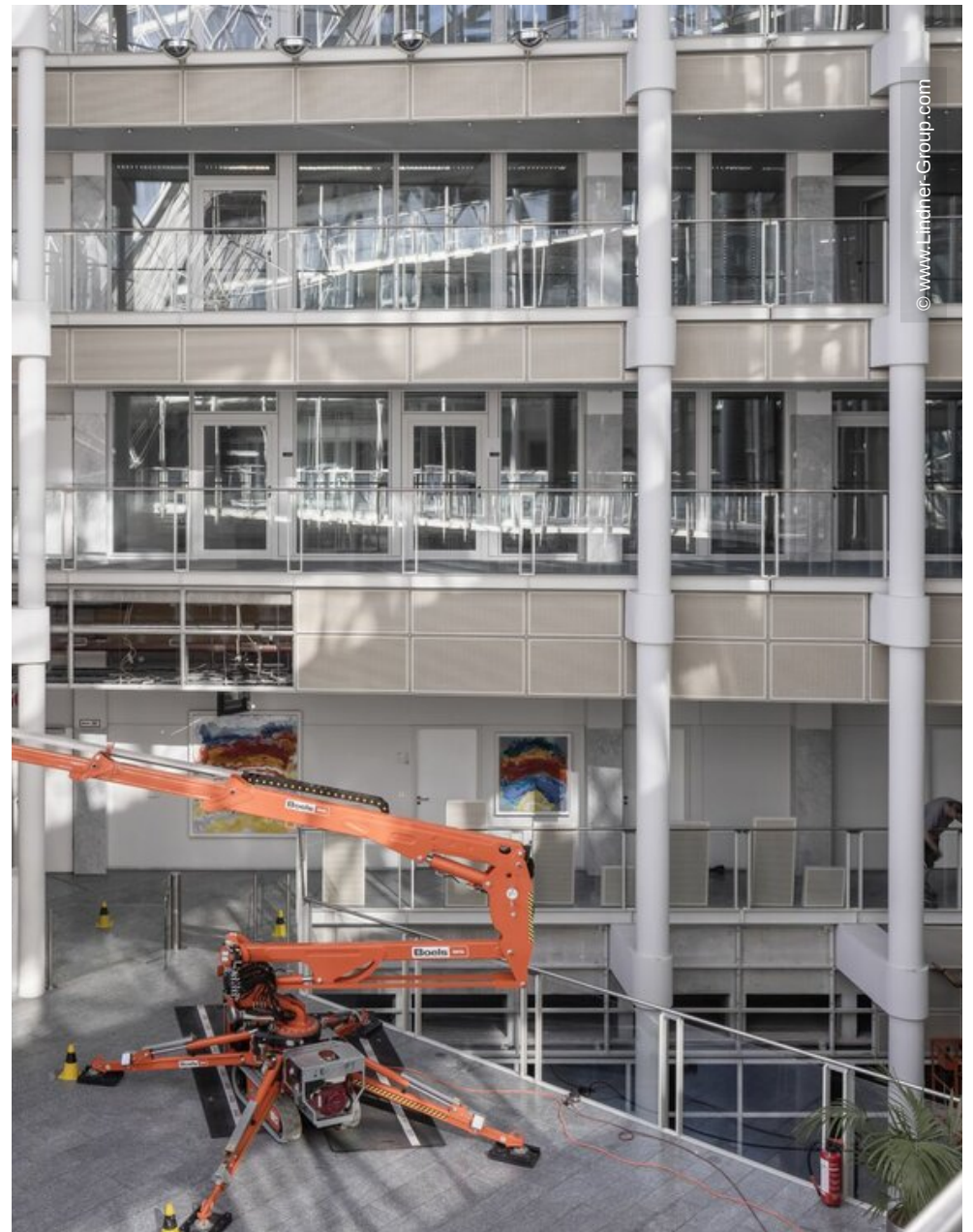
# Completed Works

- **Partitions**
  - Partition Systems Full Panel
    - Lindner Logic 100 Metal
  - Wall and ceiling panels
  - Partition Systems Glass
    - Lindner Life Stereo 125
- **Doors**

## General

<b>Building Type</b>	Office buildings
<b>Company Division</b>	Lindner SE   Partitions
<b>Completion</b>	2023









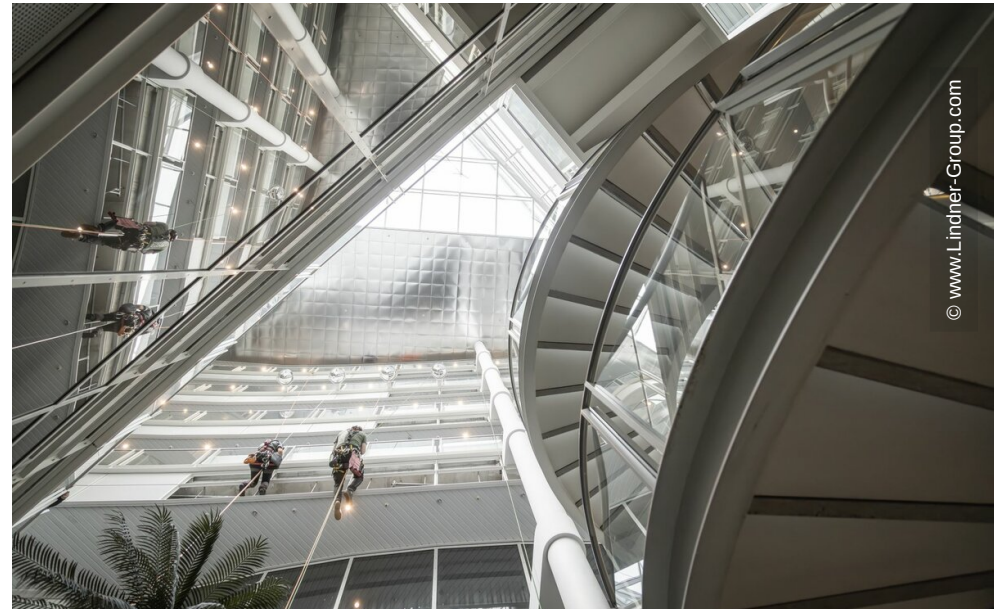




© www.Lindner-Group.com



© www.Lindner-Group.com



© www.Lindner-Group.com



