

Forskaren

Stockholm, Sweden





© www.Lindner-Group.com

Project Description

Forskaren, the centrepiece of the new district Hagastaden in Stockholm, impressively embodies the symbiosis of research, industry, academia, and the public sphere. The central location and distinctive circular design not only encourage social interaction but also establish it as a natural meeting point within this new urban area. Moreover, the district provides a top-tier research ecosystem in the areas of health, life sciences, and therapies, while creating modern housing, a new underground station, and green recreational spaces.

With two product solutions, the Lindner Group contributed to the successful realisation of this project: The NORTEC raised floor system stands out for its excellent sound insulation and high walking comfort, making it ideal for the diverse demands of Forskaren's scientific and public spaces. Additionally, the non-combustible calcium sulphate panels meet the highest ecological standards, with nearly all NORTEC variants being FSC® certified, thanks to the use of pre- and post-consumer recycled paper.

Particularly noteworthy is the RIBline Timber ceiling cladding, which offers a modern and safe finish with its elegant wood appearance and fire-resistant gypsum core. The system enhances the interiors aesthetically and stands out for its resource-efficient construction: the core is made from recycled gypsum and can be supplied with FSC®-certified wood veneer upon request. The combination of environmentally friendly materials and appealing design complements the architectural concept of Forskaren, contributing to the creation of an inviting environment.

General

Building Type	Office buildings, Common Rooms
Company Division	Lindner SE IPC
Completion	2022 - 2024
Client	Vectura

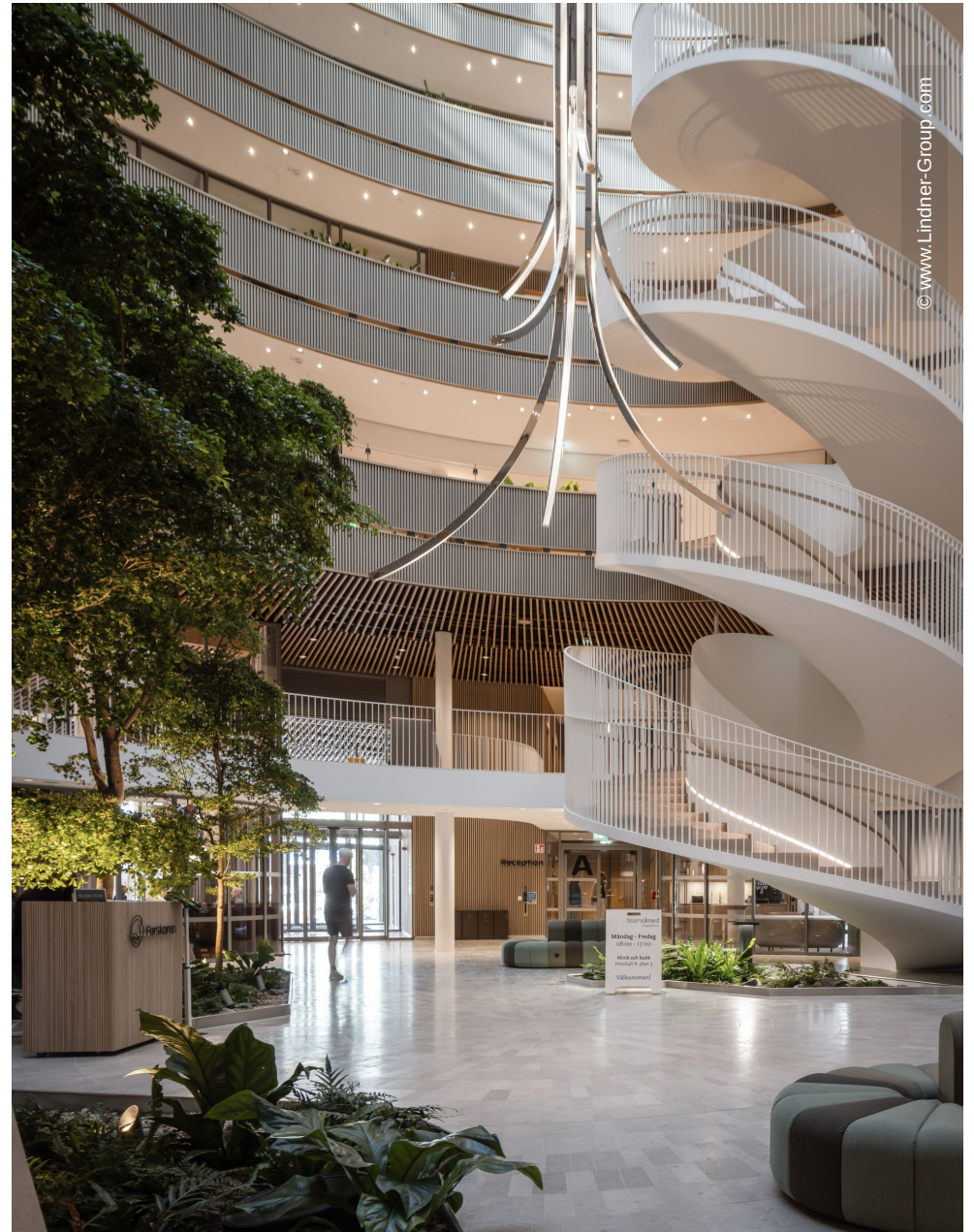
Completed Works

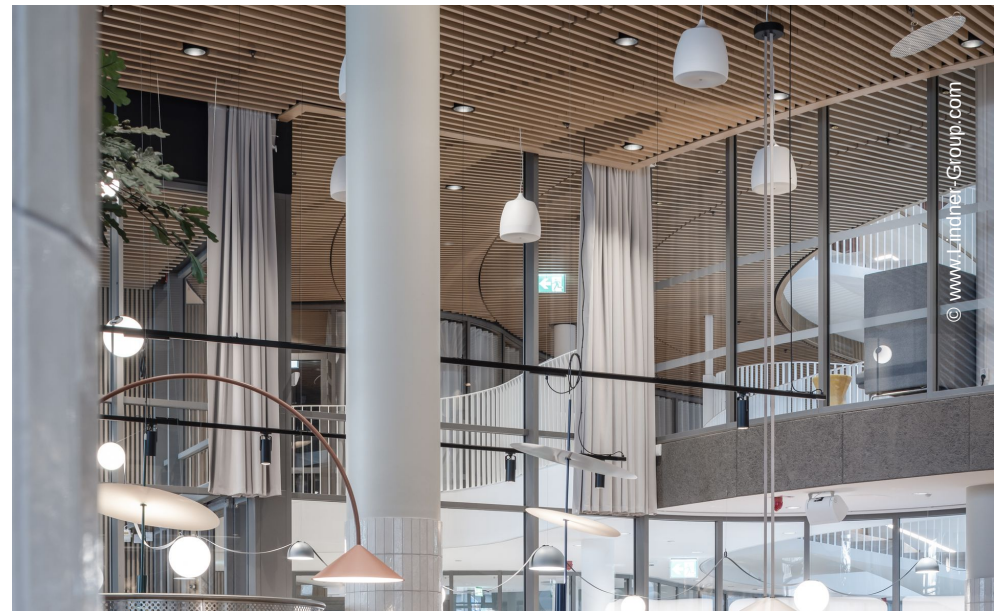
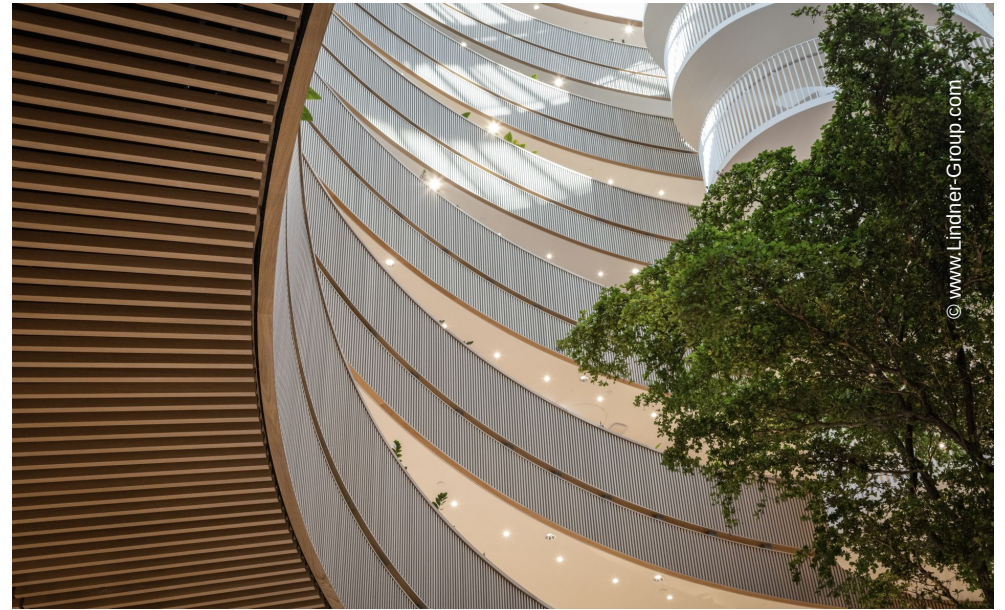
- **Partitions**

Wall and ceiling panels	
RIBline Timber Slats Ceiling	2000 sqm

- **Floors**

Calcium sulphate panels	
NORTEC	18000 sqm







© www.Lindner-Group.com



© www.Lindner-Group.com



© www.Lindner-Group.com

