

Joachim-Erwin-Platz 1

Düsseldorf, Germany





© www.Lindner-Group.com

Project Description

The JEP1 is a modern, eight-storey hotel and retail building in the centre of Düsseldorf, distinguished by a highly transparent glass facade and a greened roof area. After approximately three years of construction, the first two floors of the new building now house retail spaces for the Douglas and H&M stores. The upper floors accommodate rooms of The Cloud One Hotel – the lifestyle brand of the Motel One hotel chain. Here, 157 stylish hotel rooms and a publicly accessible sky-lounge with panoramic views over the city invite visitors to relax. The project’s client and owner is Alte Leipziger.

Lindner was responsible for a wide range of tasks in the project’s interior fit-out. The LMD-E 200 suspended ceiling creates a uniform, elegant ceiling appearance, while the highly transparent and sound-insulating Lindner Life Stereo 125 glass partition wall lends the interiors a modern and bright atmosphere. To meet the high soundproofing requirements, the CAVOPEX comfort raised floor was also installed in a custom version. In addition to the design elements, the Lindner Group’s scope of work also included numerous trades: from screed and drywall work to painting and floor covering, as well as carpentry and metalwork. Structural fire protection and the installation of plasterboard walls and ceilings were also carried out.

Completion	2022 - 2024
Architect	ingenhoven architects
Project Developer	Values Real Estate
Client	Alte Leipziger

General

Building Type	Sales Areas, Hotels and Resorts, Businesses, Recreation and Culture
Company Division	Lindner SE Fit-Out North.Northwest Germany

Completed Works

- **Ceilings**

- Hook-On Ceilings
LMD-E 200

- **Partitions**

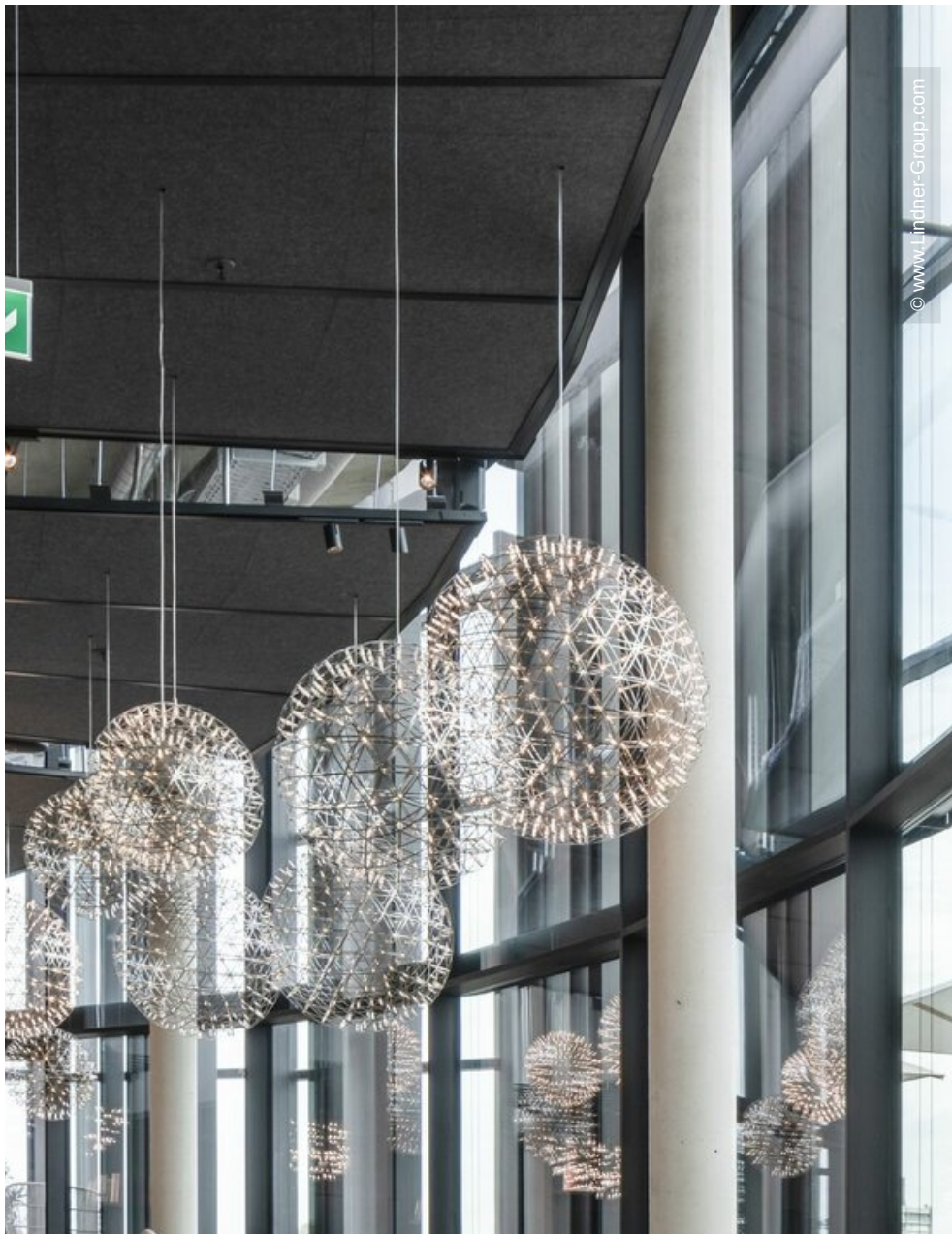
- Partition Systems Glass
Lindner Life Stereo 125

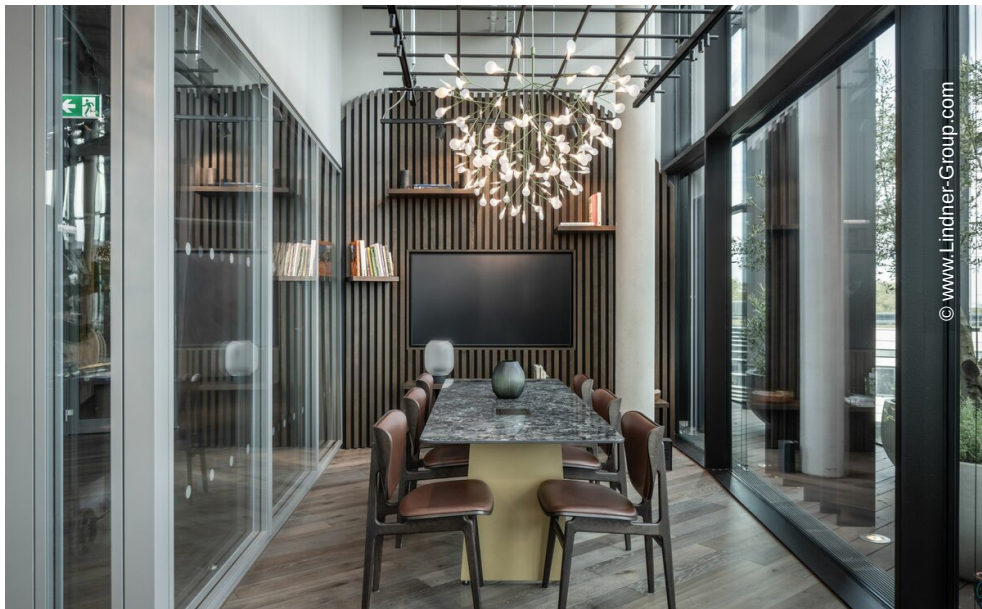
- **Floors**

- Nasshohlboden
CAVOPEX comfort

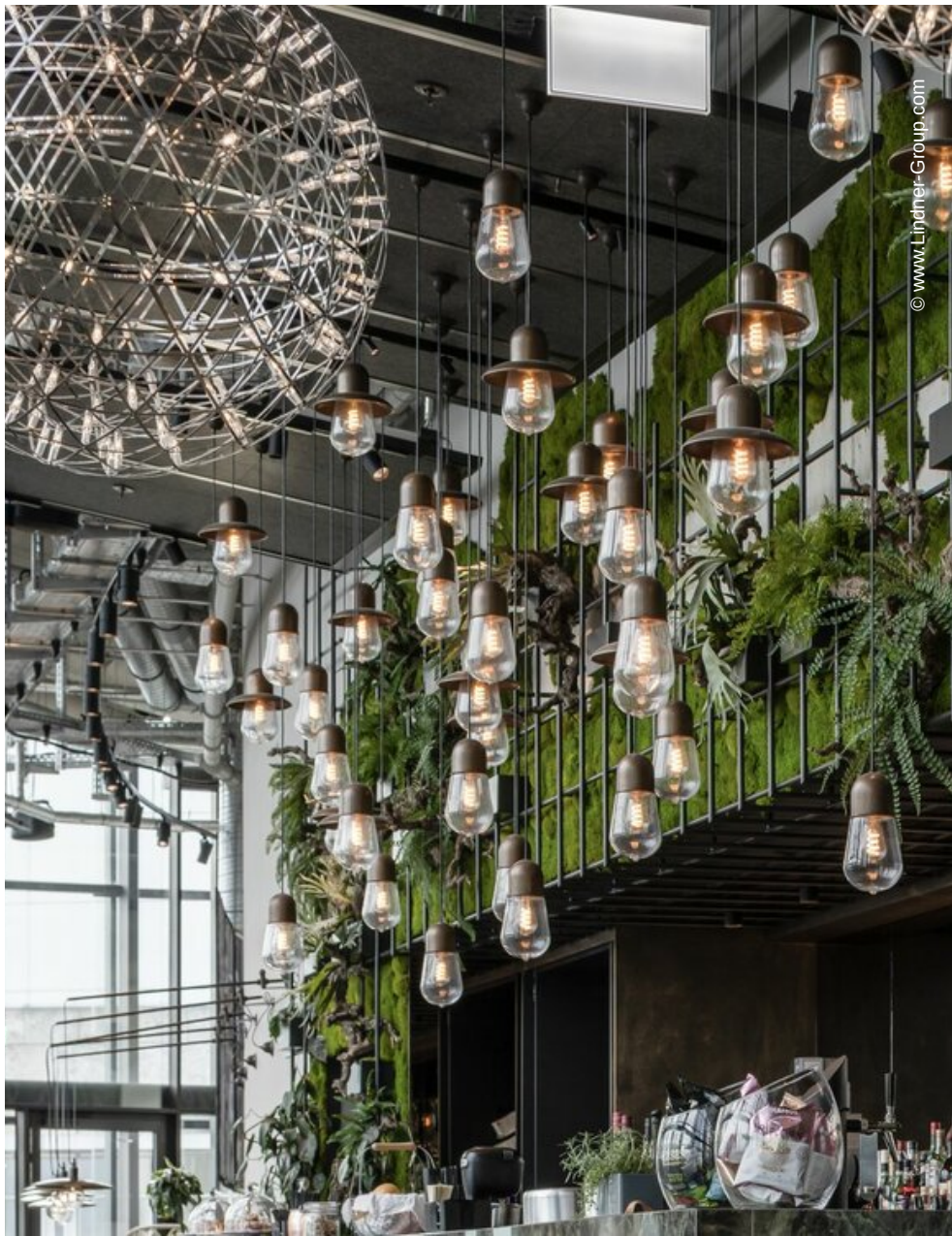
- **General Contracting**

- Screed works
 - Plastering works
 - Dry construction works
 - Tiling works
 - Painting works
 - Floor covering works
 - Metalworks
 - Cleaning works
 - Building services insulation
 - Floor coating works
 - Plasterboard ceiling systems
 - Plasterboard partition systems
 - Locksmith works
 - Carpentry

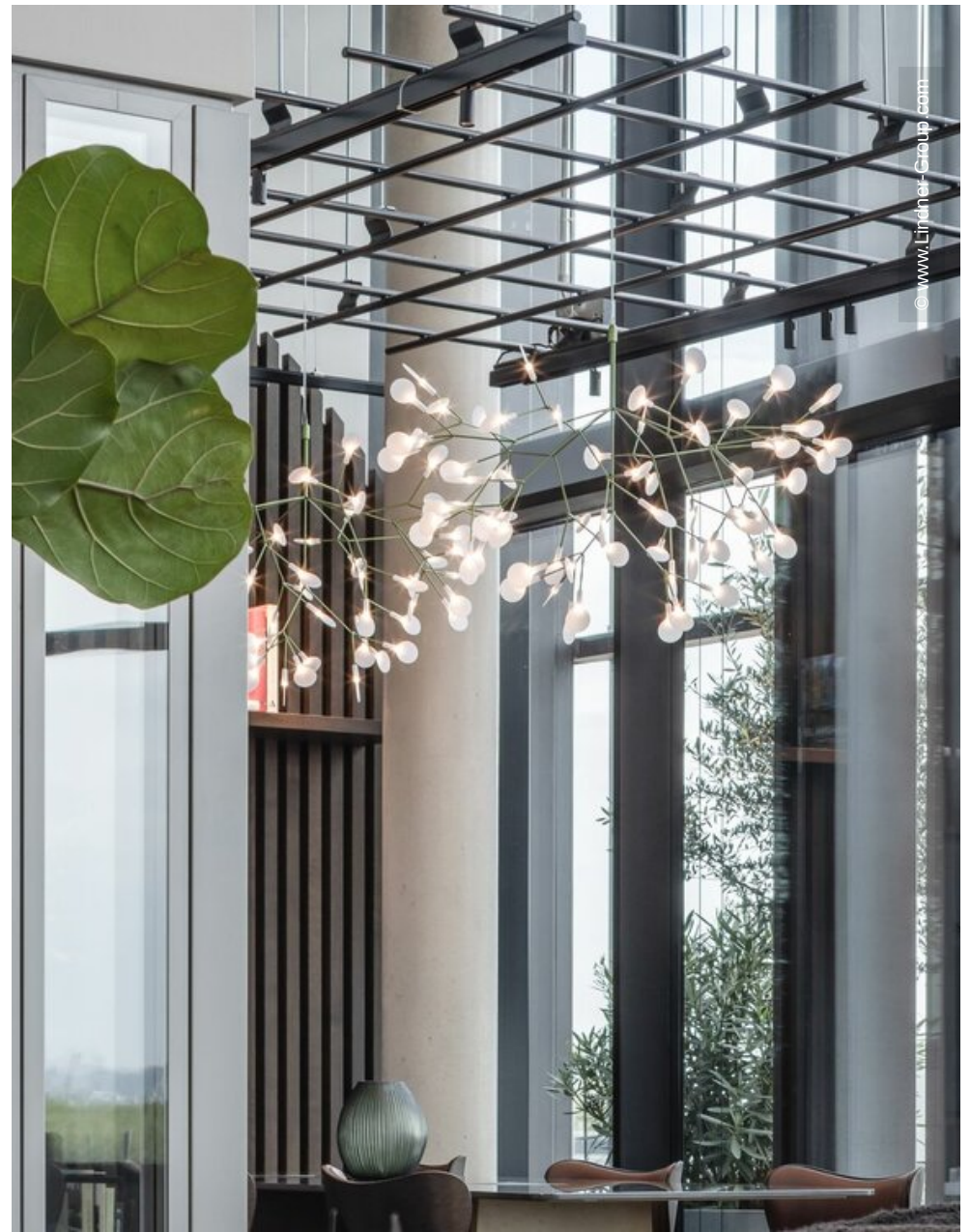








© www.Lindner-Group.com



© www.Lindner-Group.com

